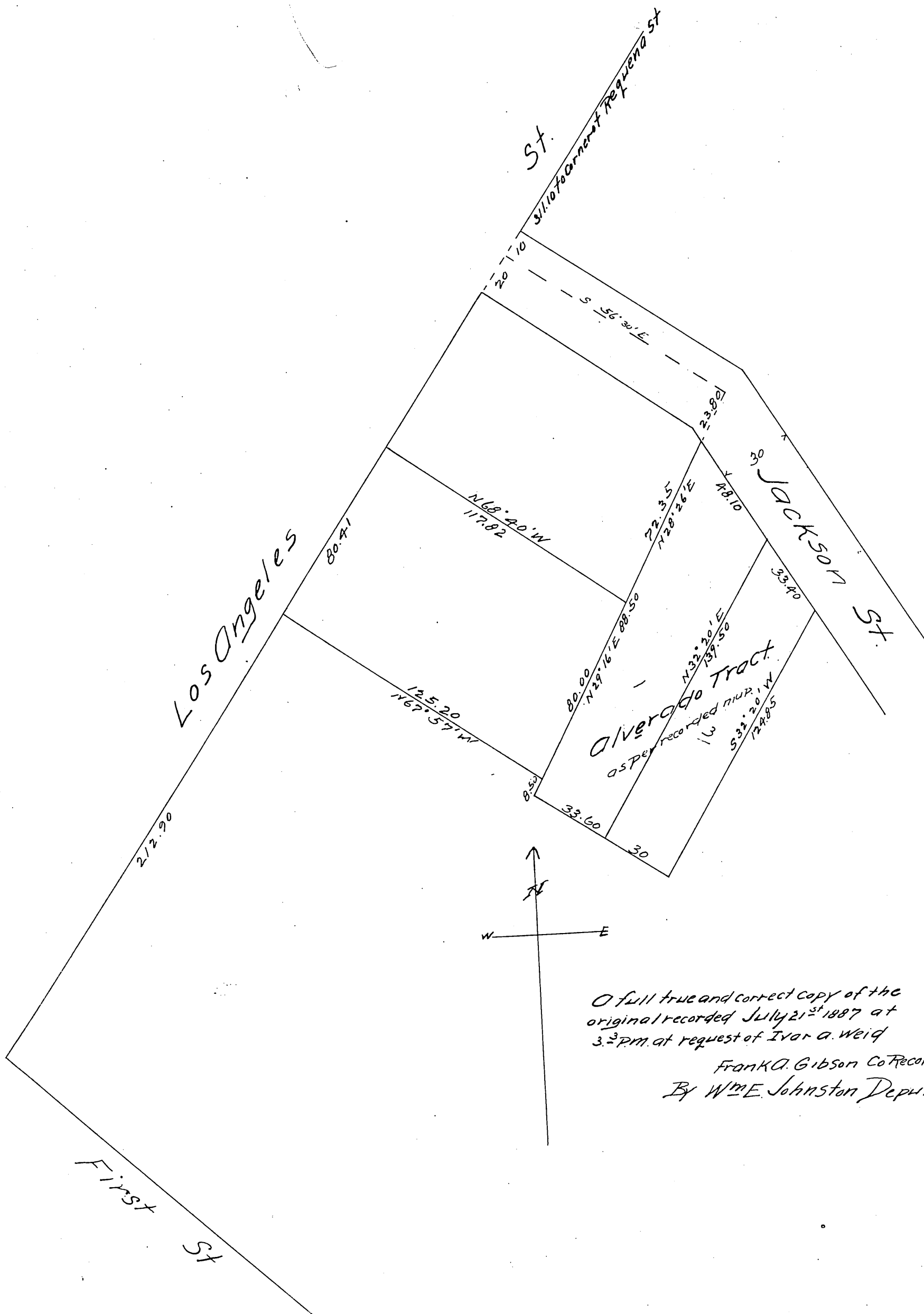


PLAT OF

I.A Weid's Property Los Angeles City Cal.

Surveyed Dec 1886 by E.T. Wright.

Scale 40ft to one inch.



A full true and correct copy of the original recorded July 21st 1887 at 3.3 PM. at request of Ivar a. Weid

Frank A. Gibson CoRecorder
By Wm E. Johnston Deputy