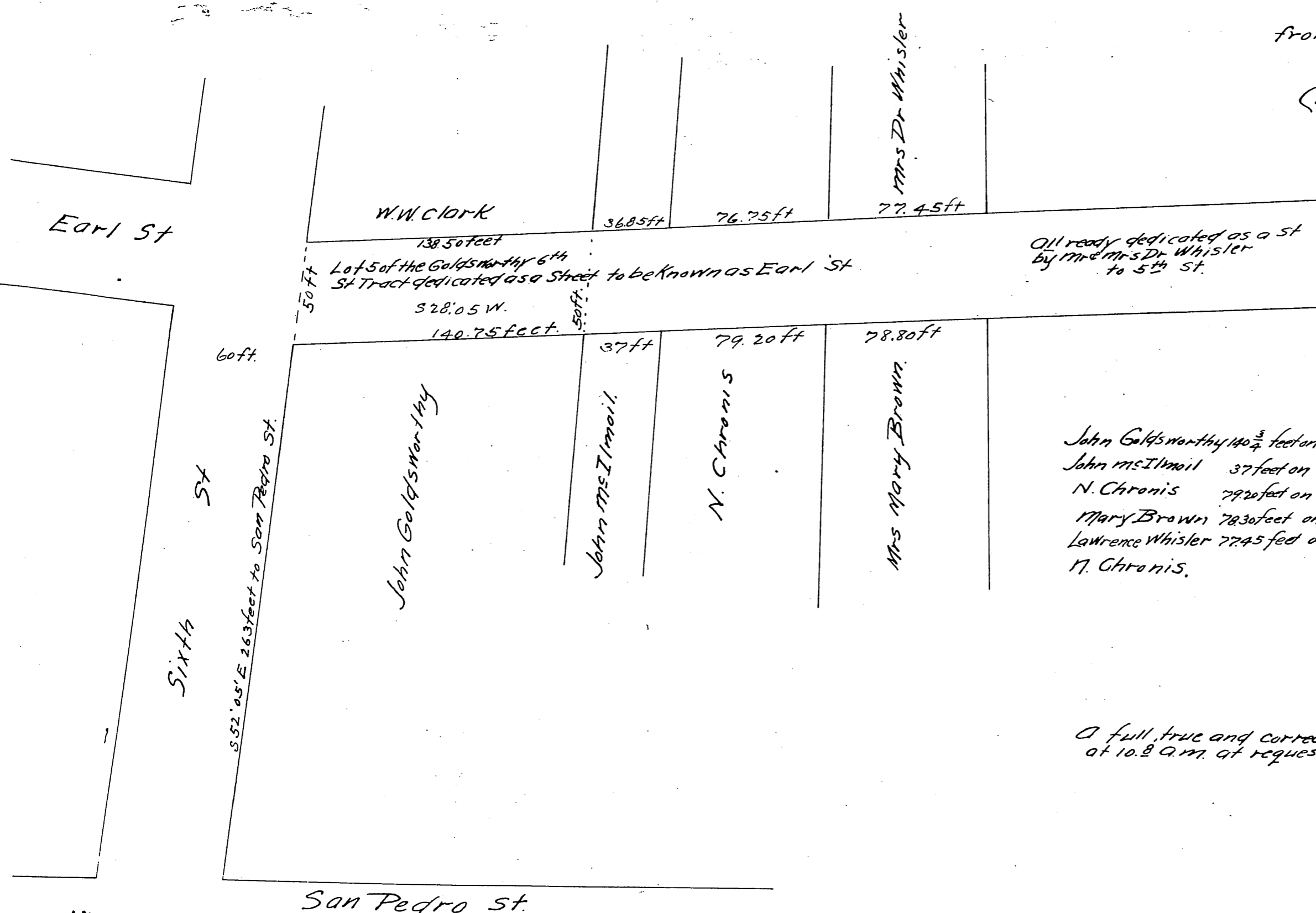


MAP OF EARL ST  
 from 6<sup>th</sup> towards 5<sup>th</sup> St.  
 in the

City & County of Los Angeles Cal  
 John Goldsworthy  
 Surveyor.

July 9<sup>th</sup> 1888



John Goldsworthy  $140\frac{3}{4}$  feet on South side &  $138\frac{1}{4}$  feet on S side Earl St.  
 John McIlmail 37 feet on South side 36.85 feet on N. side Earl St.  
 N. Chronis 79.20 feet on South side & 76.75 on N side Earl.  
 Mary Brown 78.30 feet on South side Earl St  
 Lawrence Whisler 77.45 feet on north side Earl St  
 N. Chronis.

A full, true and correct copy of the original recorded July 25<sup>th</sup> 1887  
 at 10.8 A.M. at request of John Goldsworthy  
 Frank A Gibson Co Recorder.  
 B W E Johnston Deputy.