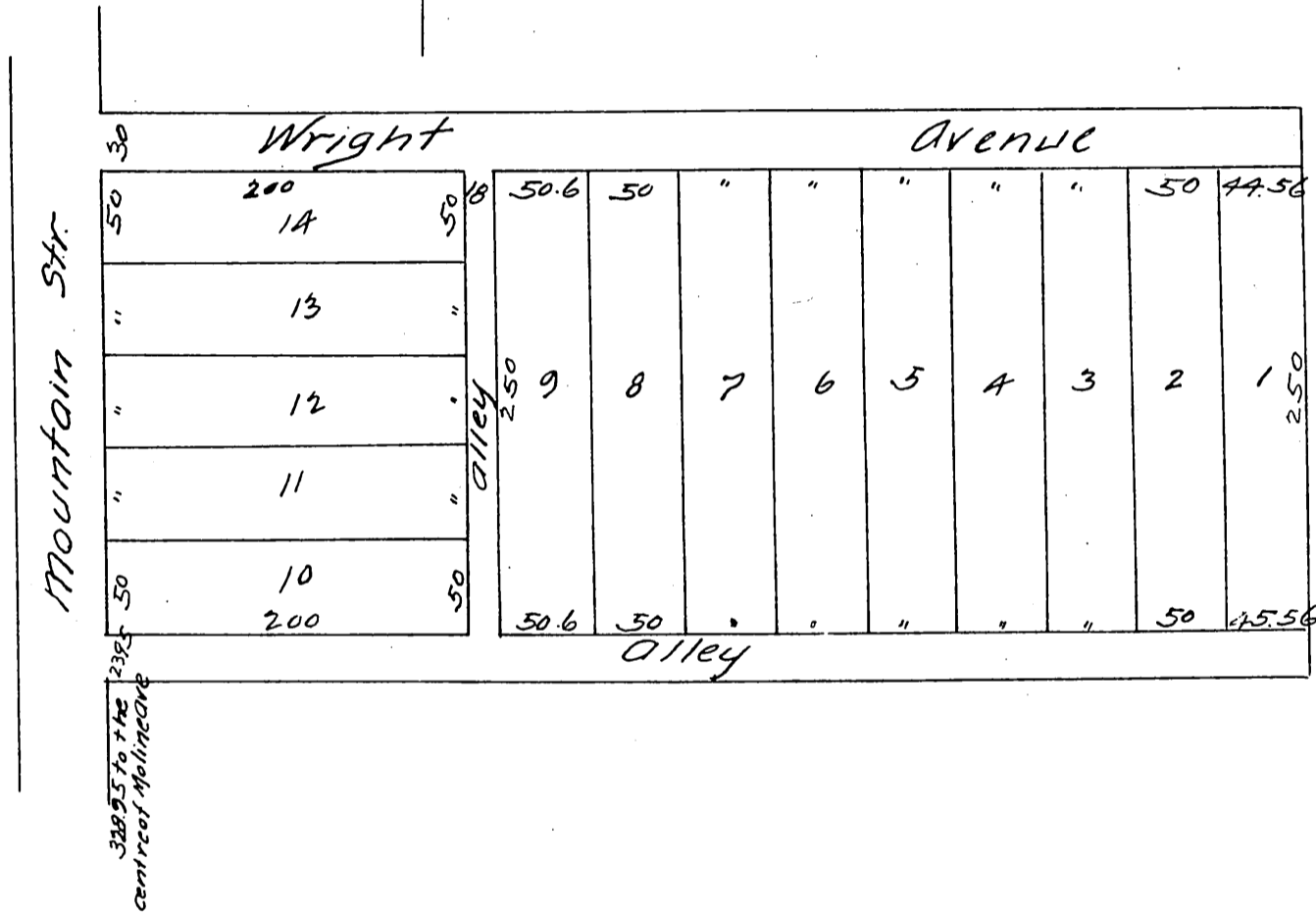
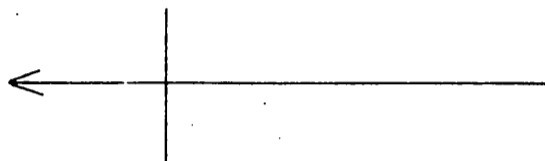


MAP

of the
Wright & Johnson Subdivision.
 being a part of the
A. B. Grogan Tract.
 of lands in the Rancho San Pasqual
 Pasadena Cal.

Surveyed July 1887 by Place and Pieper Surveyors & C. Engrs.
 Scale 50' = 1"



*A full, true and correct copy of the original
 (reduced to scale of 100 feet to one inch) recorded
 July 25 1887 at 3 PM at request of Carl A. Johnson.*

*Frank A. Gibson Co Recorder.
 By W. E. Johnston Deputy.*