

N. R. Hooper ^{and} Bro's Subdivision.

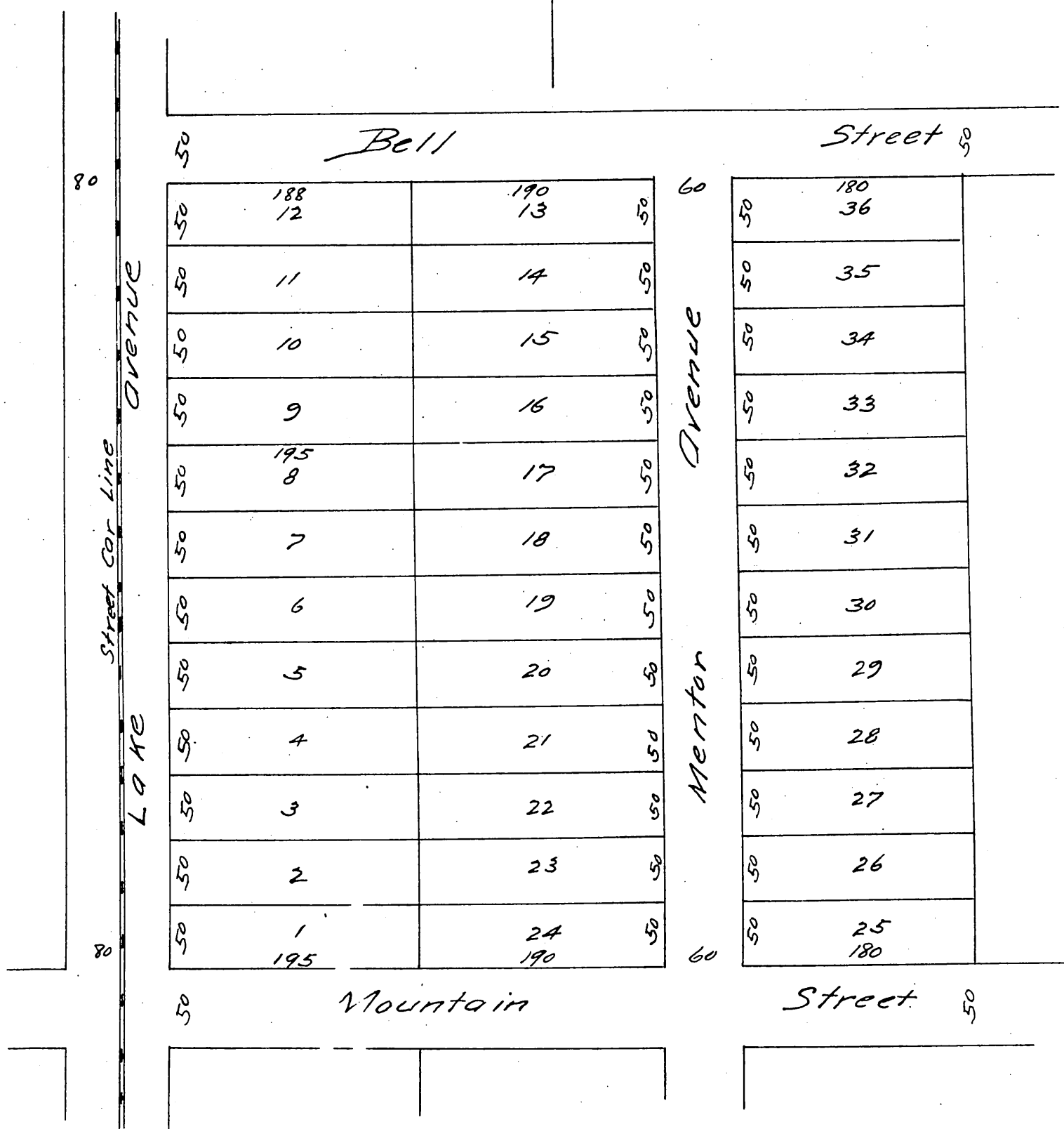
Being the Northeast corner of Lake Avenue & Mountain Street.

Comprising nearly 10 acres.

Surveyed June 1887

Riggins Bros Surveyors.

Scale 100 ft to 1 inch



A full, true and correct copy of the original recorded
 July 26, 1887 at 12:23 P.M. at request of N. R. Hooper
 Frank A. Gibson Co. Recorder.
 By W. E. Johnston Deputy