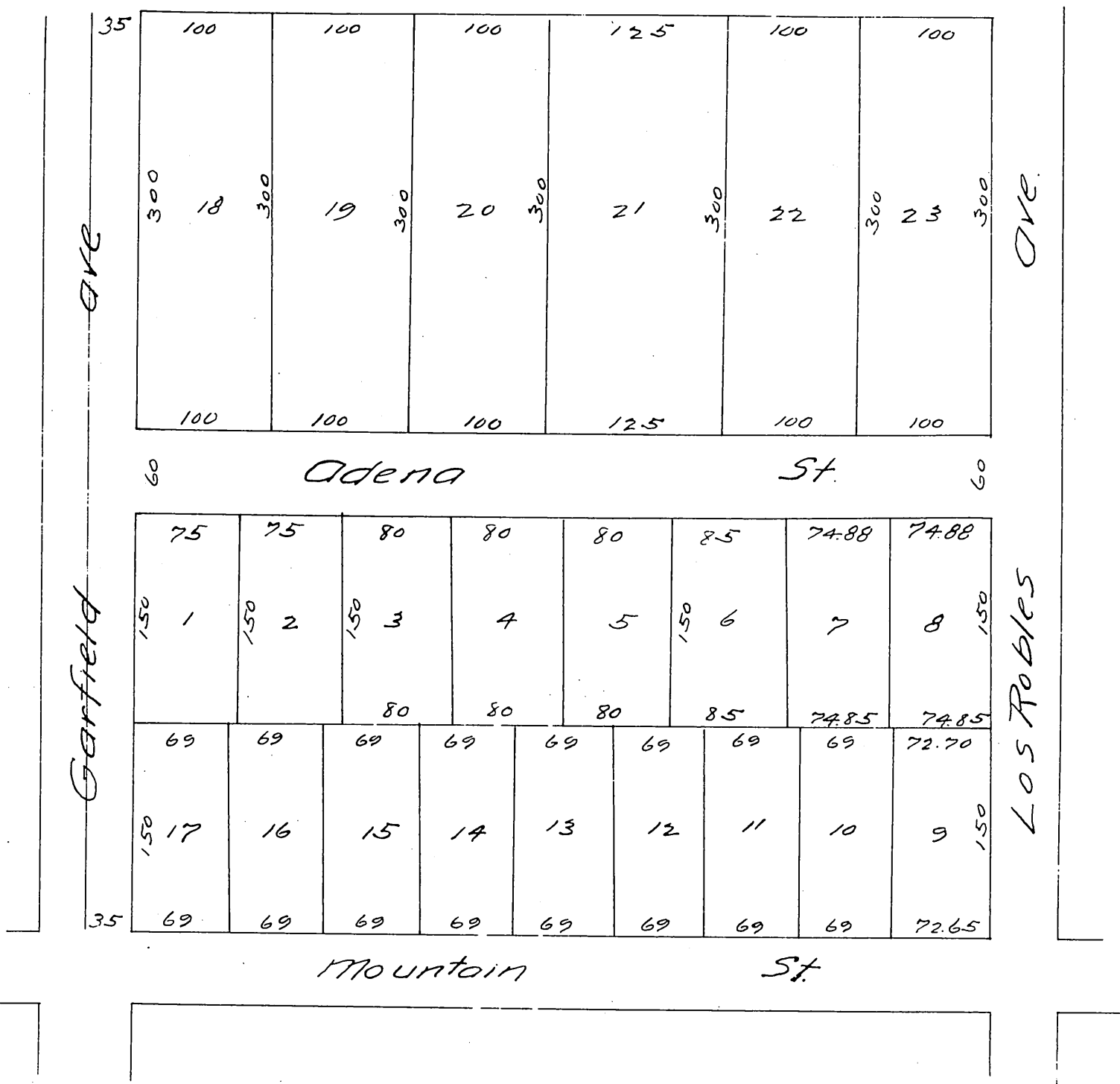


MAP  
of  
Dr R. K. Jones Subdivision  
of the South East quarter of the South half  
of Block "R" of Painter and Ball's Addition to Pasadena  
PASADENA, CAL.

Surveyed Oct 1886 by J. M. Willard C.E.

Scale 100ft 1 inch.



A full, true and correct copy of the original. Recorded  
 July 28<sup>th</sup> 1887 at 10<sup>30</sup> a.m. at request of Dr R. K. Jones.  
 Frank A. Gibson County Recorder.  
 BY W<sup>m</sup> E. Johnston Deputy.