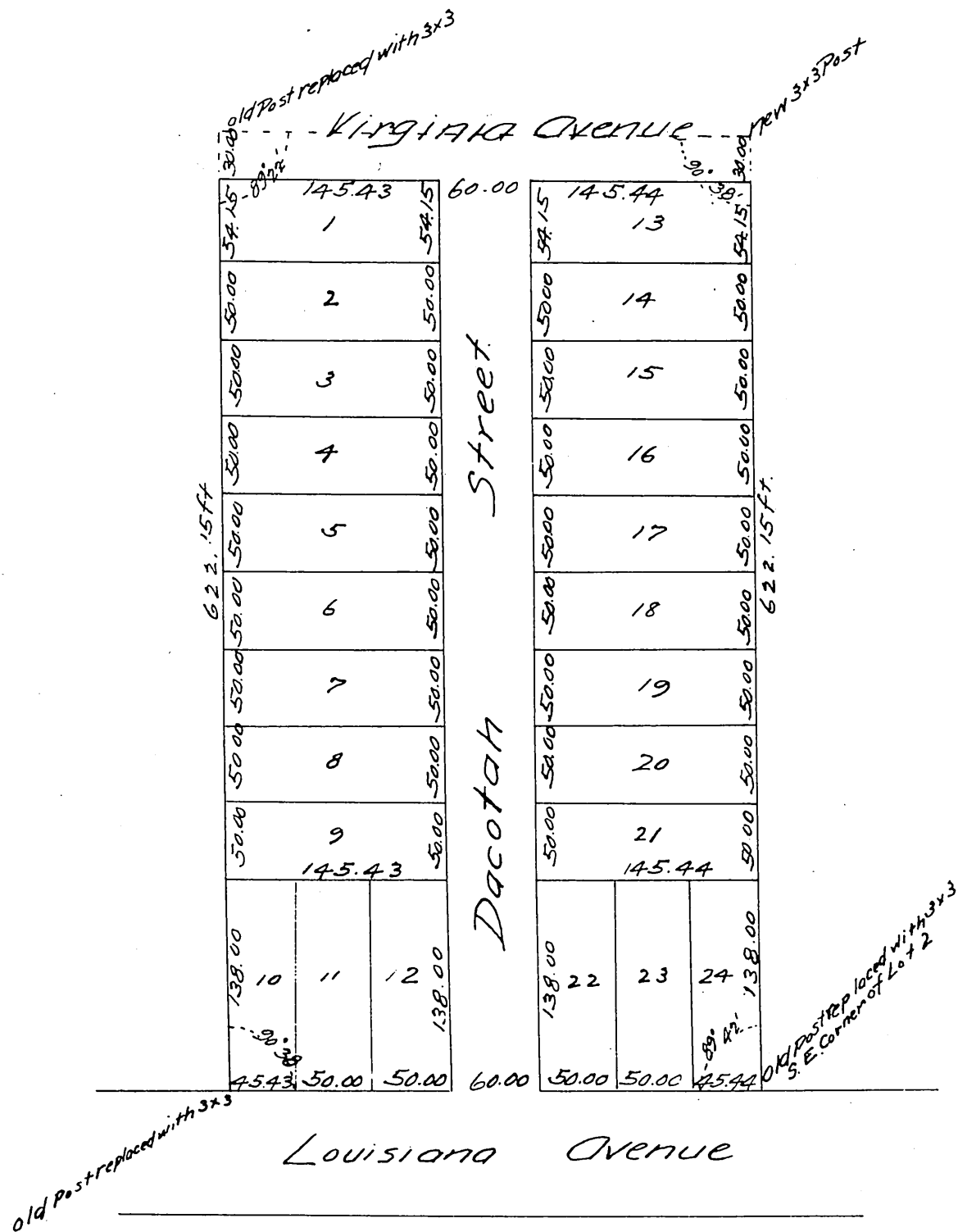


PLAT  
of the  
Dacotah Tract  
in the  
City of Los Angeles  
Being a Subdivision of Lot 2 in the Workman & Hellman Tract.  
Scale 100 ft to one inch.



Note  
The Dacotah Tract is a Subdivision of  
Lot 2 Workman & Hellman Tract.

a full, true, and correct copy of the original. Recorded July 28<sup>th</sup> 1887. at 1:42 P.M. at request of W<sup>m</sup> Ruddy.

Frank A. Gibson Co Recorder.  
By W<sup>m</sup> E Johnston. Deputy.