



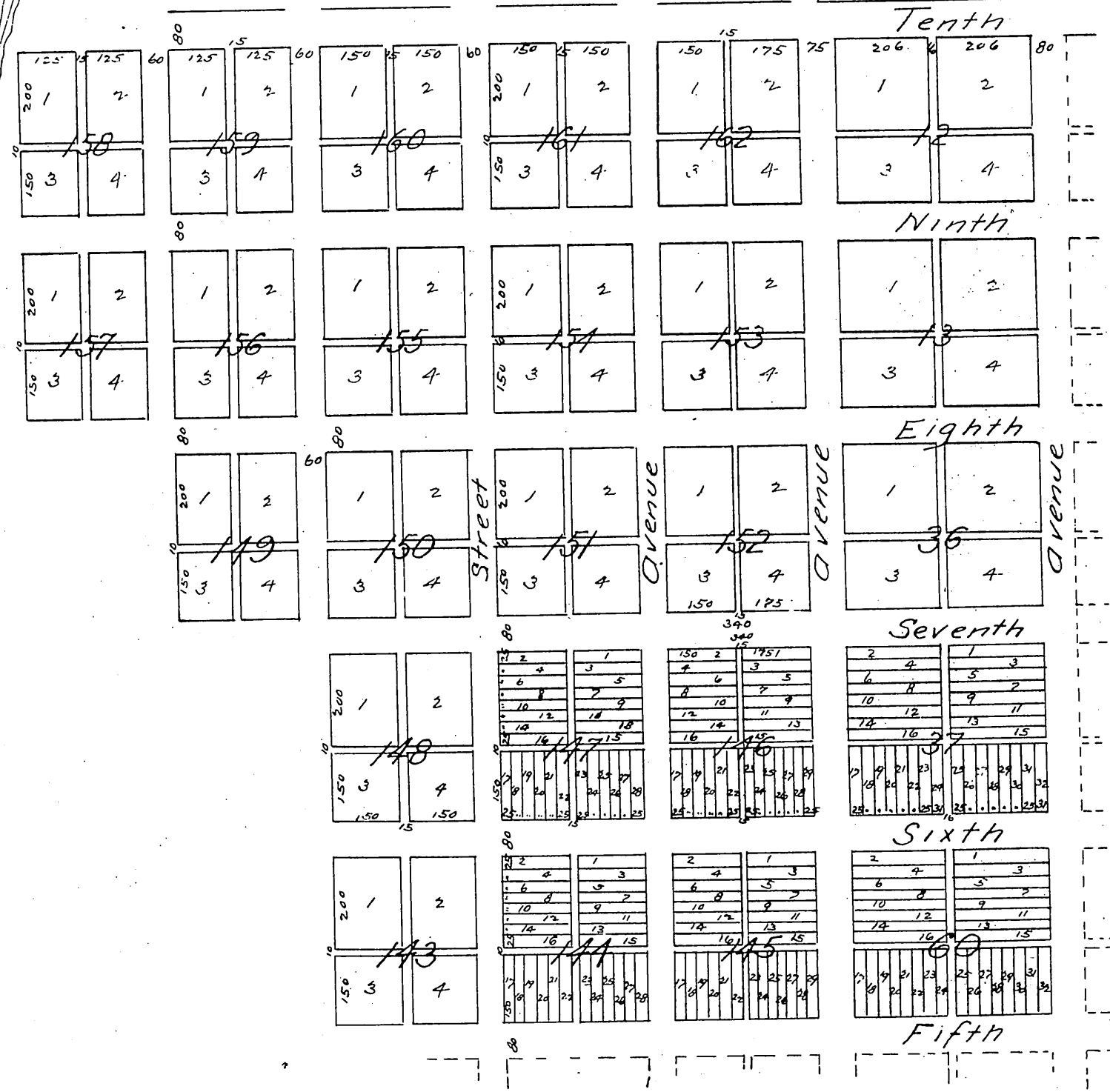
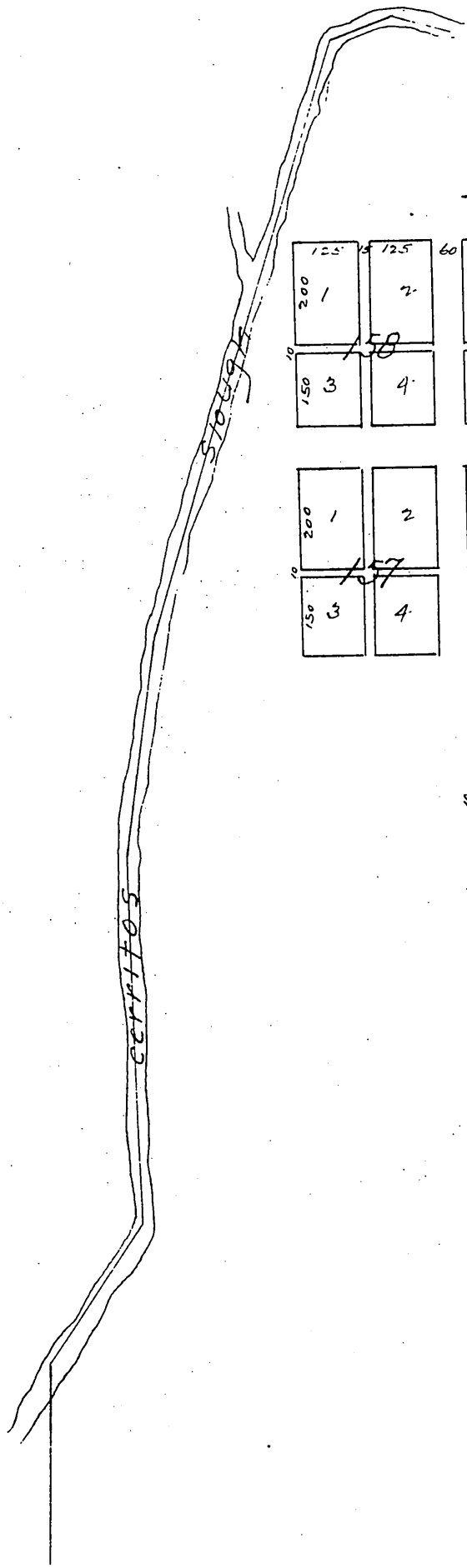
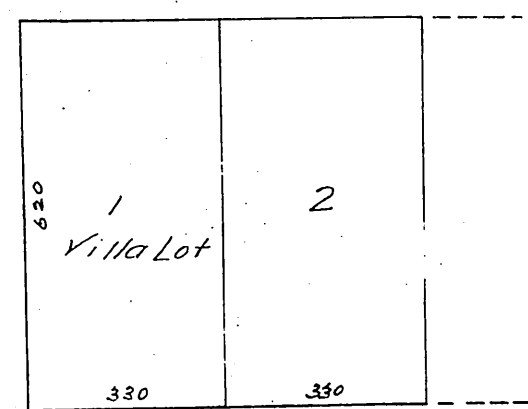
MAP OF TOWN SITE OF LONG BEACH

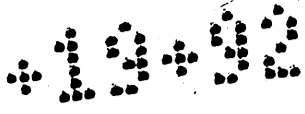
The New Sea side Resort
on the
AMERICAN COLONY TRACT.

Los Angeles Co Cal.

From Surveys made 1882-1887 by Charles T. Healey.

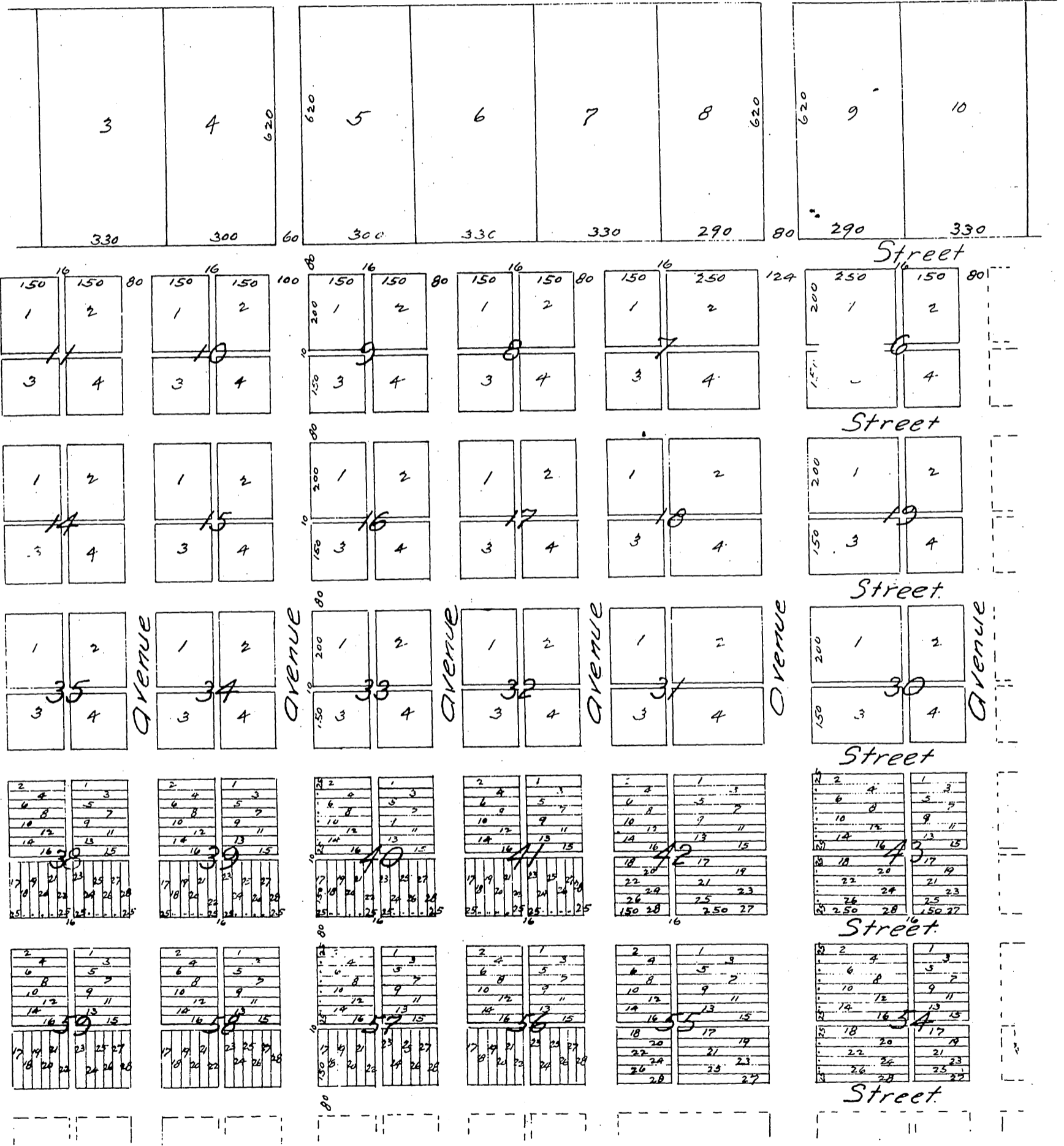
Scale 300 feet to one inch.

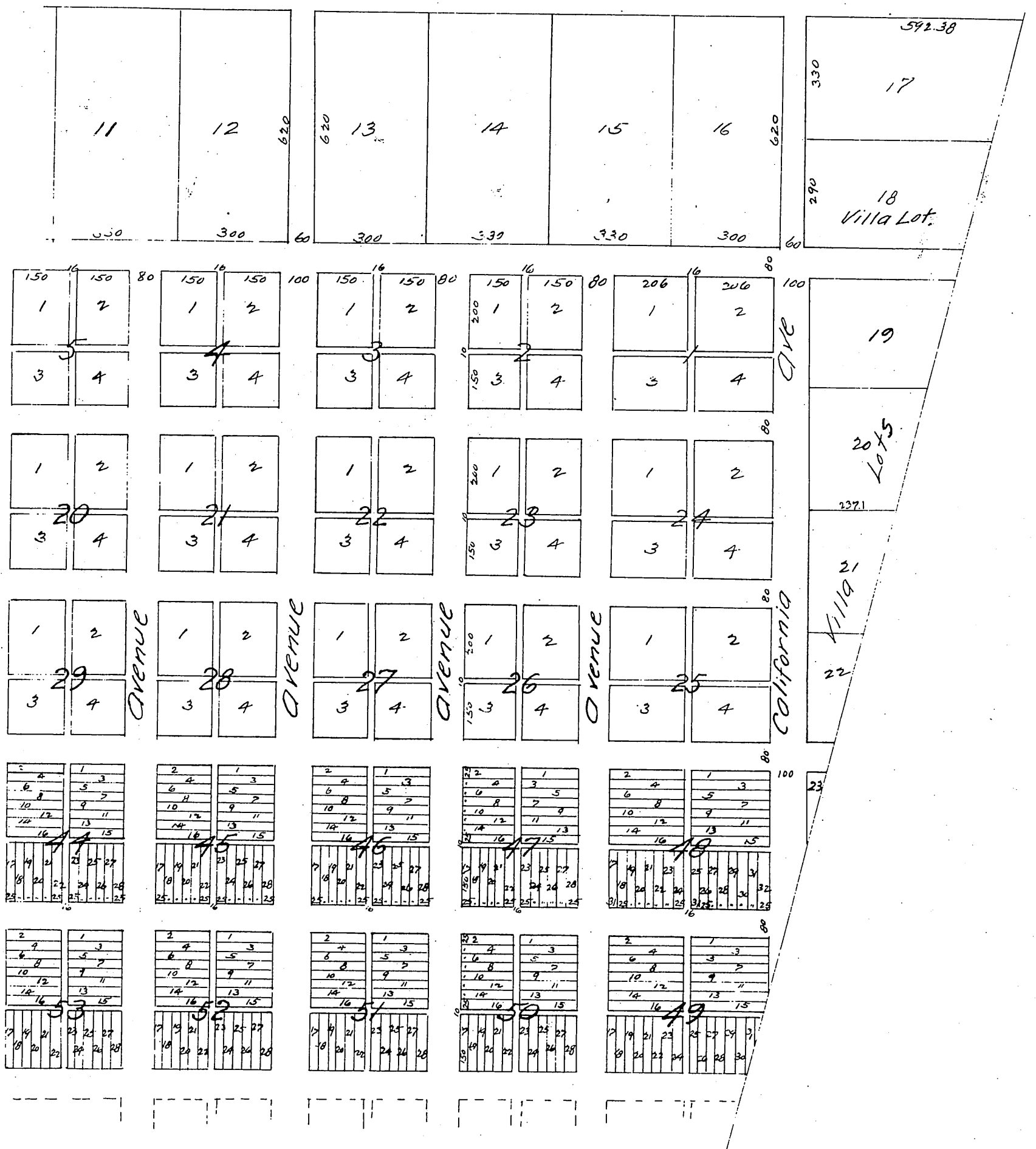
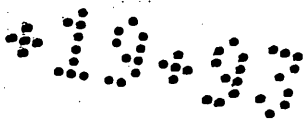


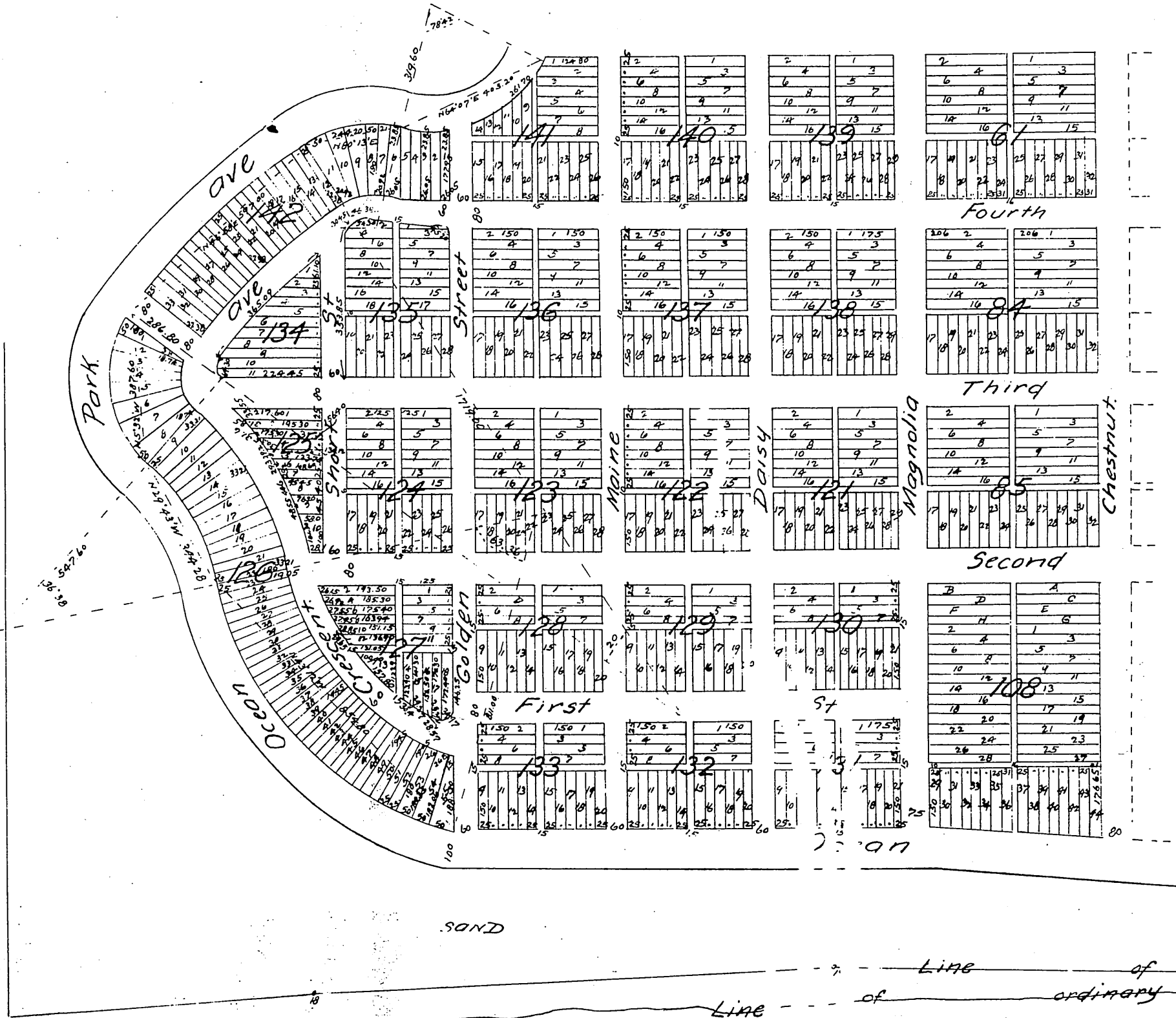


It is hereby declared by the Long Beach Land and Water Company that the lands shown on this map lying between the South line of Ocean Park Avenue and inside or north of the line of the bluff extending along the sea shore where ever the line of said bluff may be from the east line of Golden Street produced to the sea and the line of the Cerritos Rancho on the east shall be forever reserved from sale by the Long Beach Land and Water Company and no structure of any kind shall ever be placed thereon, excepting on those parts thereof marked respectively Reservation A and Reservation B. In Witness Whereof, these presents have been executed pursuant to a resolution of the Board of Directors of said Corporation this 9th day of February A. D. 1887

Geo. R. Crow President
attest A. C. Pomeroy Secretary



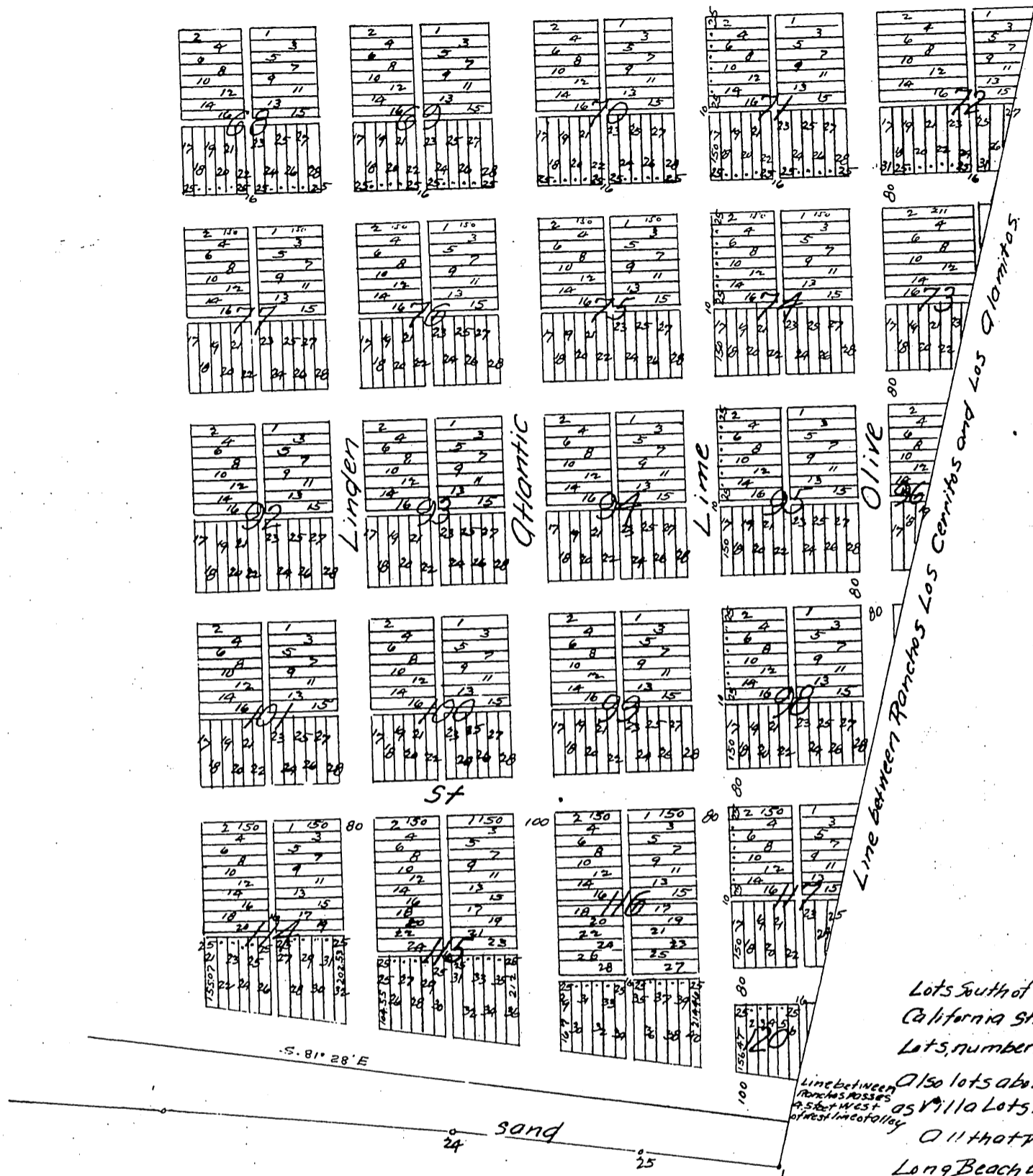
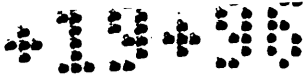




PACIFIC



OCEAN



Lots South of Tenth Street and East of California Street are known as Villa Lots, numbers 19 to 23 inclusive.

Also lots above Tenth Street, are known as Villa Lots numbers 1 to 18 inclusive.

All that portion of the Town of Long Beach bounded on the North by Tenth Street East by the Alamitos Rancho, South by the Pacific Ocean and West by Magnolia Avenue was formerly called Willmore City.

Charles T. Healey, Surveyor.

We the undersigned hereby certify that this map is a true copy of the map by and according to which we have heretofore made conveyance of lots and blocks in the Town Site of Long Beach and in the Town Site formerly known as Willmore City said Willmore City forming a part of and included within the boundaries of said town of Long Beach known as Long Beach.

Jotham Bixby (Seal)
 Jewellyn Bixby (Seal)
 Thos Flint by his attorney in fact (Seal)
 Jewellyn Bixby (Seal)

a full, true and correct copy of the original, Recorded July 30th 1887 at 56 min past, 3 P.M. at request of A. E. Pomeroy.

Frank A. Gibson County Recorder.
 By W. E. Johnston Deputy.