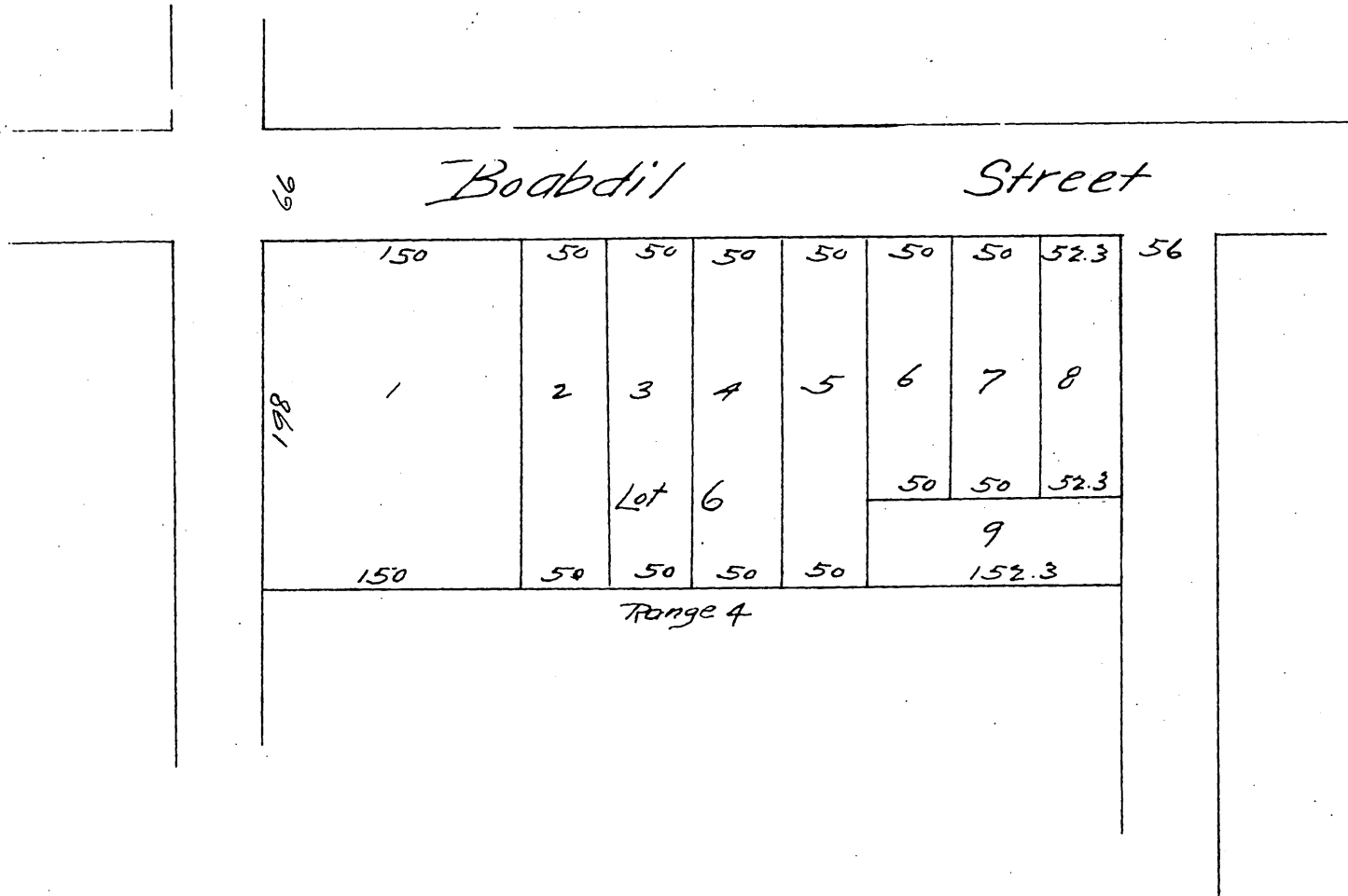


Stanton & Weeks's  
 Subdivision  
 of Lot 6 Range 4 Alhambra Tract  
 Surveyed by Gervaise Purcell C.E.  
 Scale 100 ft to 1 inch.



A full, true and correct copy of the original recorded Aug 1st  
 1887 at 10<sup>30</sup> a.m. at request of W. H. Stanton

Frank A. Gibson County Recorder  
 By W<sup>m</sup> E. Johnston Deputy.