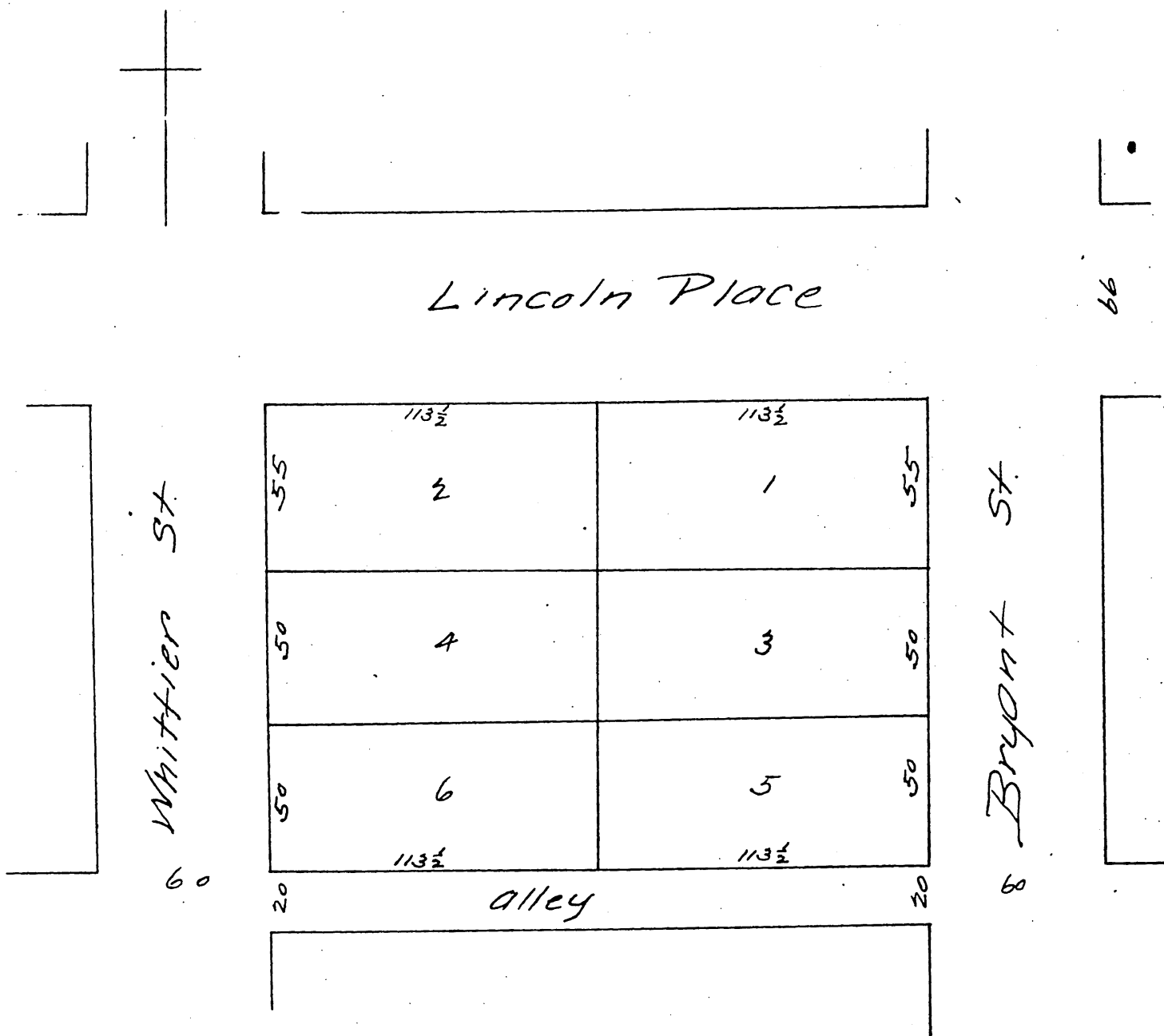


# O'Neal Subdivision

Replatted by  
Samson and Scott

Surveyed by Sheperd & Harris  
July 26<sup>th</sup> 1887



A full, true and correct copy of the original.  
(reduced one half) Recorded August 1<sup>st</sup> 1887  
at 10.45 a.m. at request of M.L. Samson.

Frank A Gibson County Recorder.  
By W<sup>m</sup> E Johnston, Deputy.