

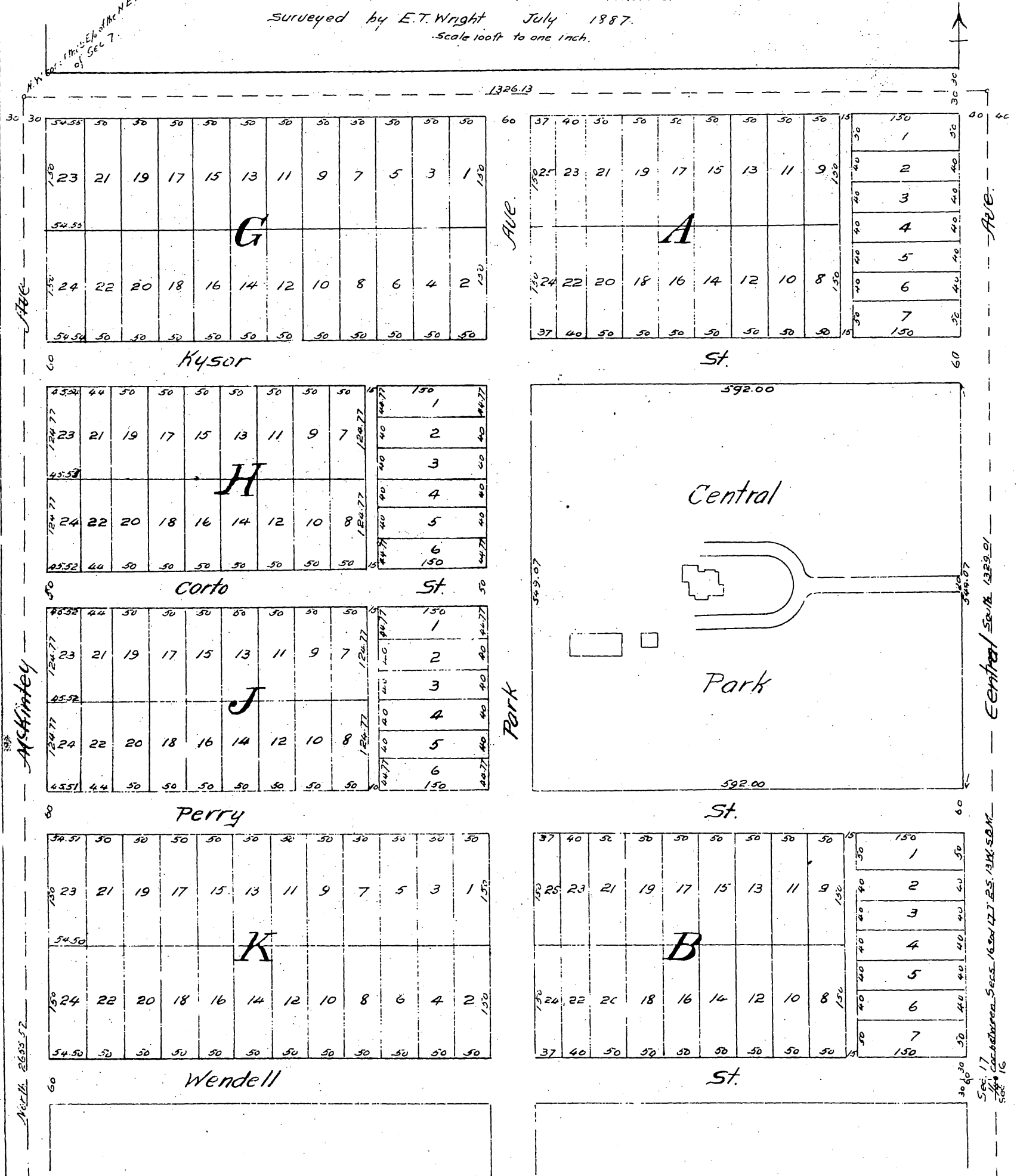
Map OF THE CENTRAL PARK TRACT

Being a Subdivision of the "Kysor Place",

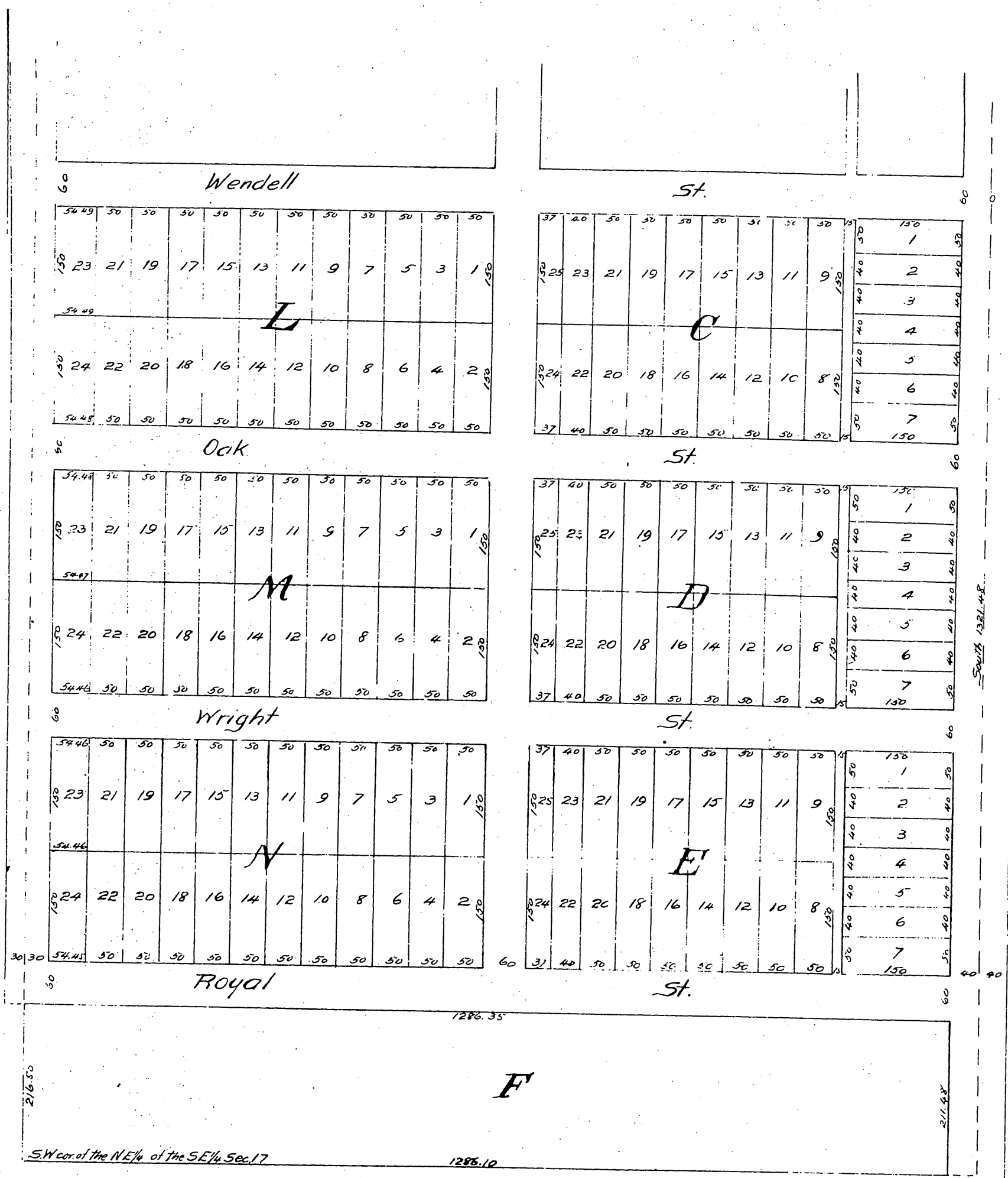
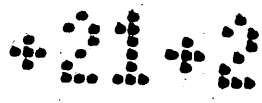
VERNON DISTRICT
Los Angeles Co. Cal.

Owned and Subdivided by the Los Angeles & Vernon Street Railway Co
STOCK HOLDERS.

SEE KYSOR. J. D. BICKNELL, D. G. STEPHENS,
C. E. DAY, E. T. WRIGHT, FRANK A. GIBSON
Surveyed by E. T. Wright July 1887.
Scale 100ft to one inch.



E. T. Wright Surveyor do hereby certify that the correct description of the front forming the Northwest corner of the subdivision known as the Central Park Tract is the N.W. cor. of the S. E. 1/4 of the S. E. 1/4 of the S. E. 1/4 of Sec 17 T. 2. S. R. 13 N. & D. 6 E. and not the N.W. cor. of the S. E. 1/4 of the S. E. 1/4 of the S. E. 1/4 of Sec 7 as erroneously given on map of said tract recorded in Book 21 pages 1 and 2 of Miscellaneous Records of Los Angeles County, California
E. T. Wright.



A full true and correct copy of the original (reduced to the scale of 120 feet to one inch) recorded August 1st 1887 at 4:54 P.M. at request of E.T. Wright.

Frank A. Gibson, County Recorder.
 by George Rugbee, Deputy.