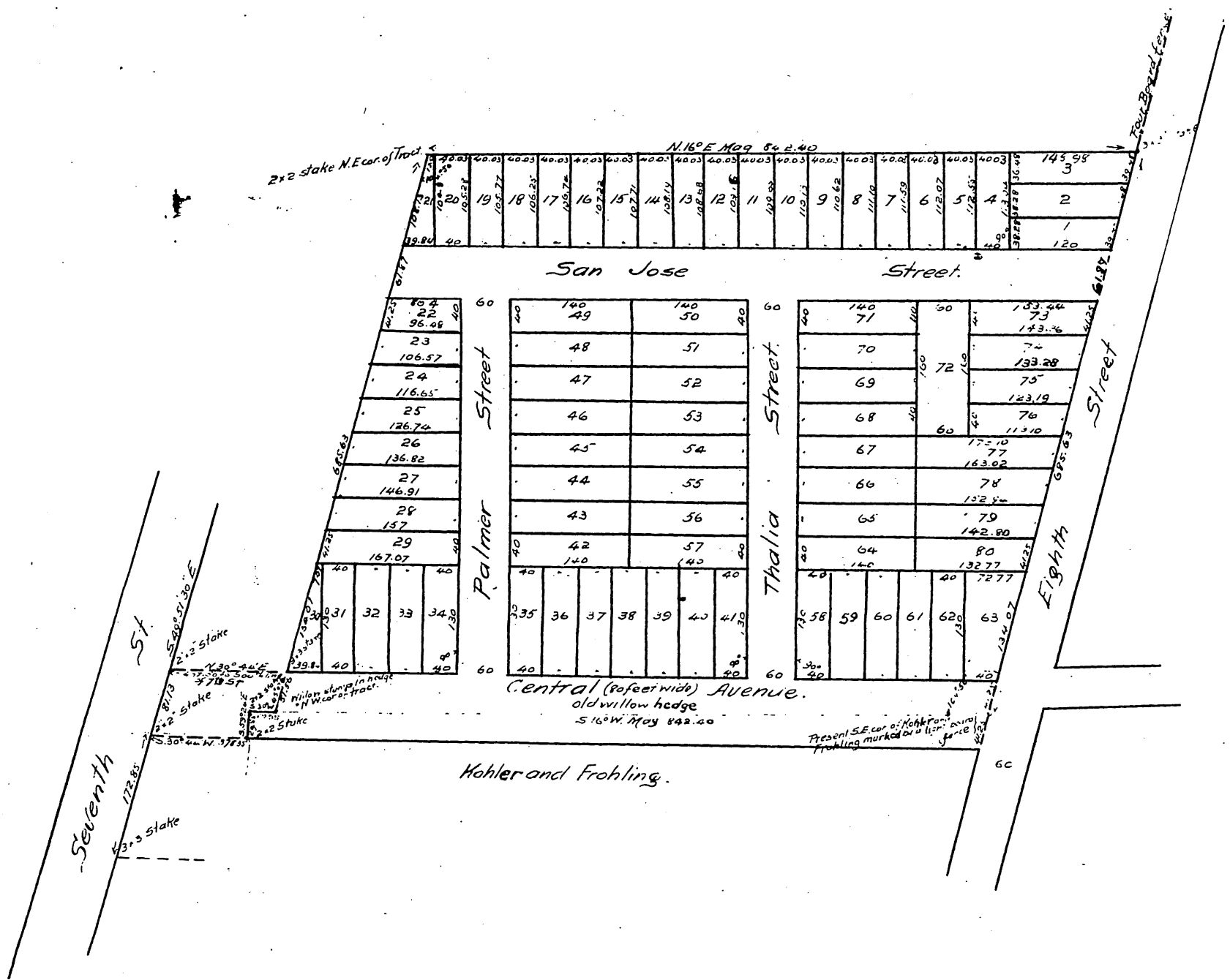


Map
of the
O.J. Mairs Tract
Situating in

Los Angeles City, Cal.
Surveyed in July 1887 by J. H. Dockweiler.
Scale: 50 feet = one inch.

Being a subdivision of that certain Tract of land described in an agreement to convey made by Maspare Cohn and H. Z. Osborne to S. J. Mathes July 28 1887 and recorded in Book Page of Deeds Records of L.A. Co. Cal.



(A full true and correct copy of the original, reduced to the scale of 100 feet to 1 inch) recorded August 2nd 1887 at 10:54 AM. at request of S. J. Mathes.

Frank A. Gibson County Recorder.
by George Baylee Deputy.