

Map of the

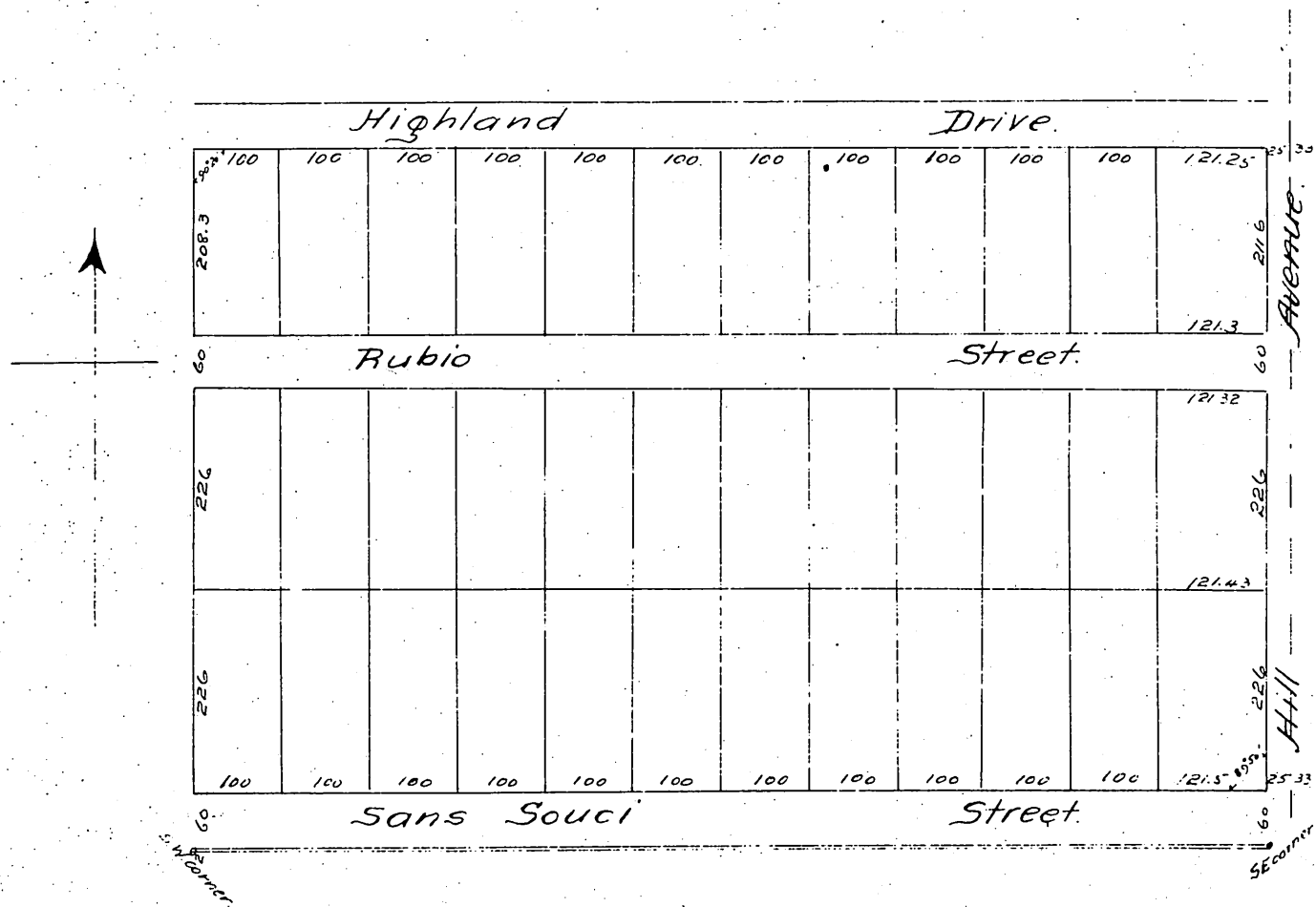
Ocean View Tract

A Subdivision of the South 22.47 Acres of Lands
conveyed by Deed from Alex. B. Grogan to M. E. Hodge Kins.

As recorded in Book 105 of Deeds Page 589 of Los Angeles County Records.

Pasadena

Scale 100 feet = 1 inch Surveyed by J. M. Willard. C.E. 1887.



A full, true and correct copy of the original (reduced to an exact one-half size) recorded August 2nd 1887 at request of W. R. Staats.

Frank A. Gibson, County Recorder
by George Keyser Deputy.