

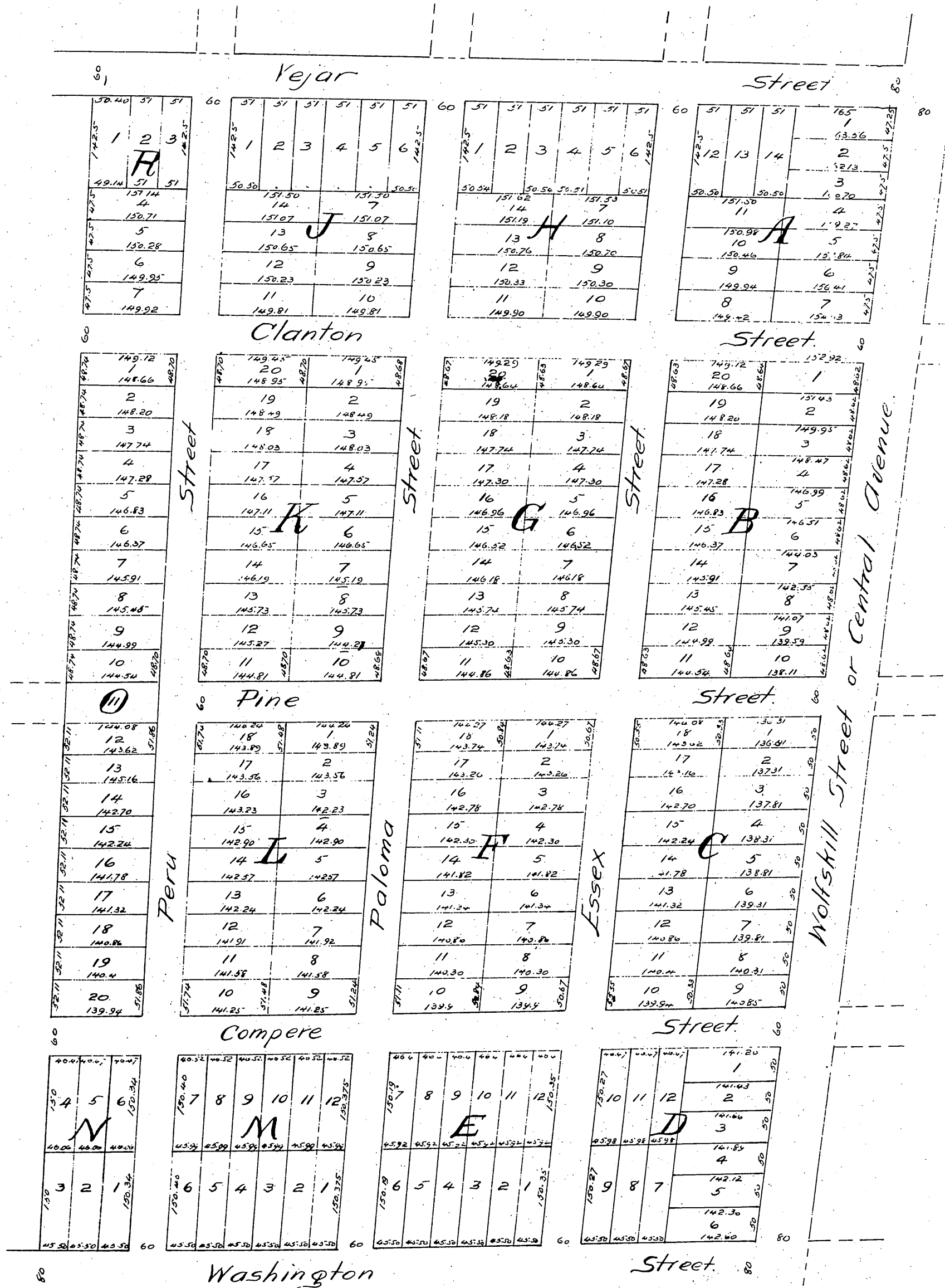
Walnut Grove Tract

Being a subdivision of the Cohn property
on the cor. of Washington and Wolfskill Sts.

City and County of Los Angeles

Surveyed by J. Goldsworthy July 1887.

Scale 80 ft to the inch.



A full true and correct copy of the original
(reduced to the scale of 160 feet to 1 inch) recorded
at 3:4 PM
August 2nd 1887, at request of G.W. Tubbs.

Frank A. Gibson County Recorder.
By George Kuyler Deputy.