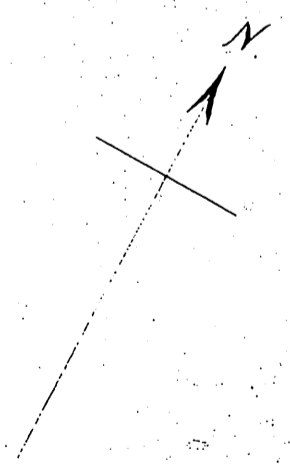
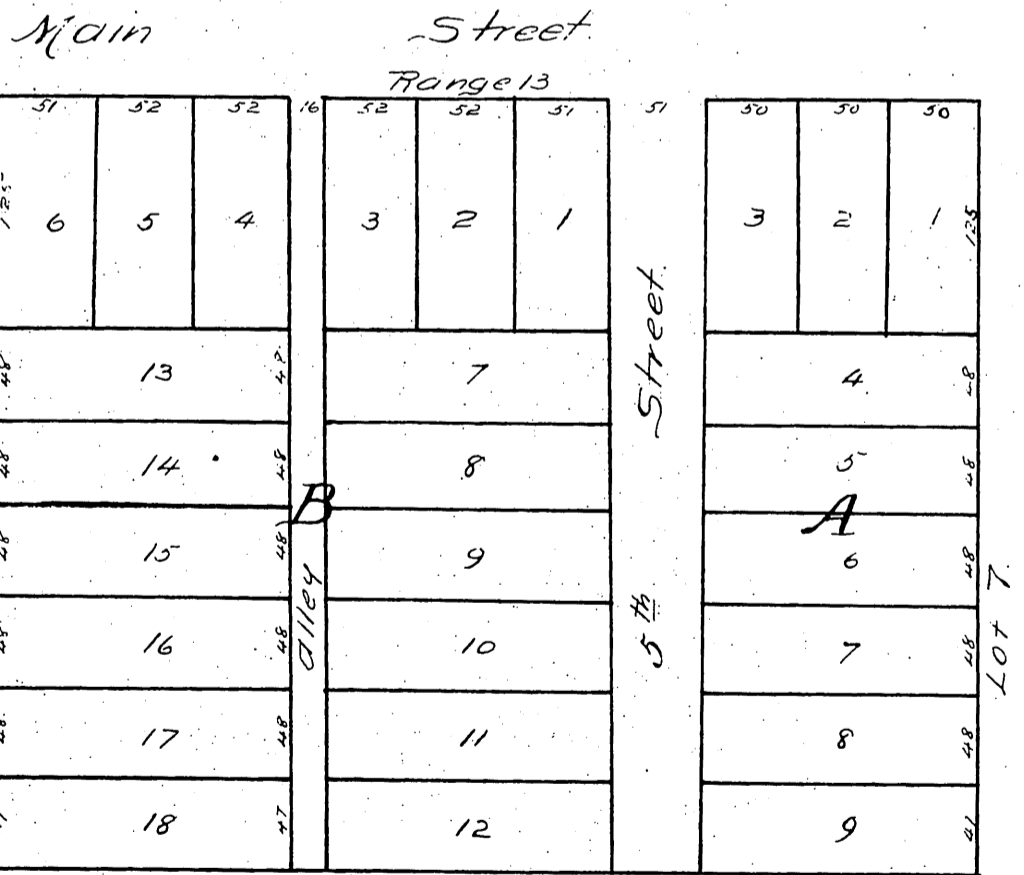
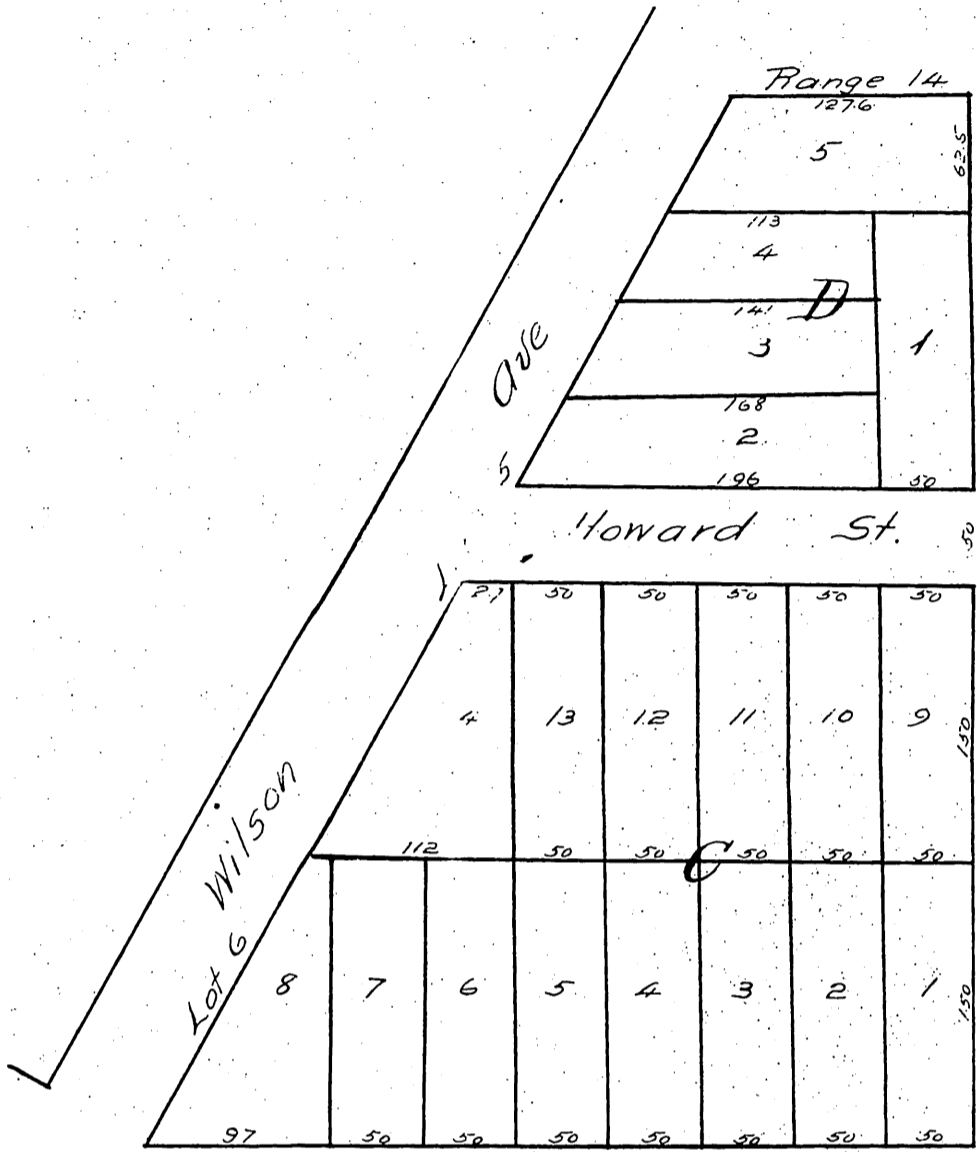


Main Street Tract.

Being the Subdivision of Lots 5 & 6 Range 14

Also Lot 7 Range 13 Alhambra Add. Tract.

Scale 100ft to 1 inch. Surveyed by Gerlaise Purcell. C.E.



A full true and correct copy of the original recorded August 2nd 1887 at 4:55 P.M. at request of H.M. Sale.
 Frank A. Gibson County Recorder
 by George Baugbee Deputy