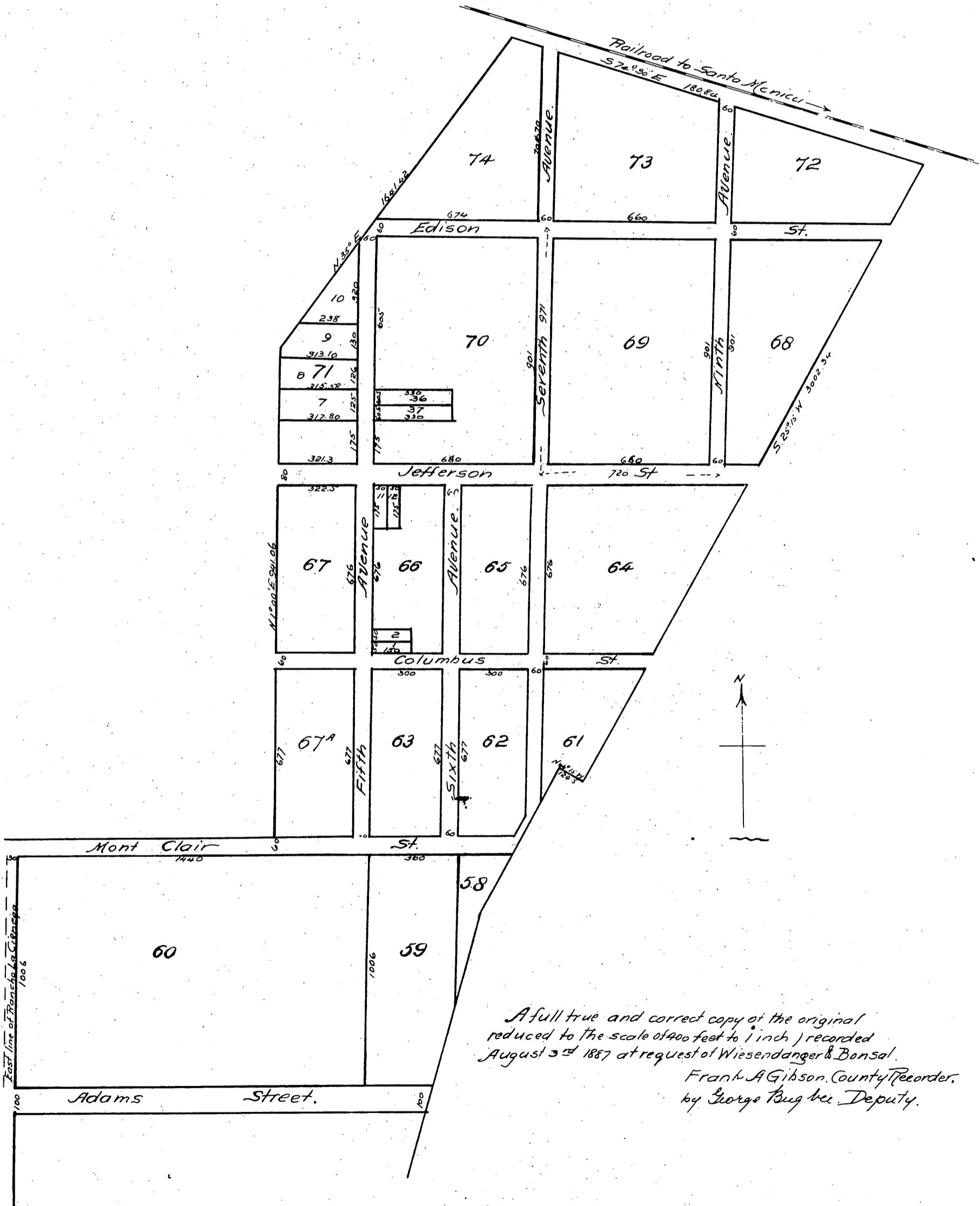




Map
OF
South Arlington
Being the South Part of the Joughin Tract
of Rancho
La Cienega
Surveyed by C.E. Jones C.E. 1887



A full true and correct copy of the original
reduced to the scale of 400 feet to 1 inch, recorded
August 3rd 1887 at request of Wiesendanger & Bonsal.
Frank A. Gibson, County Recorder,
by George Bugbee, Deputy.