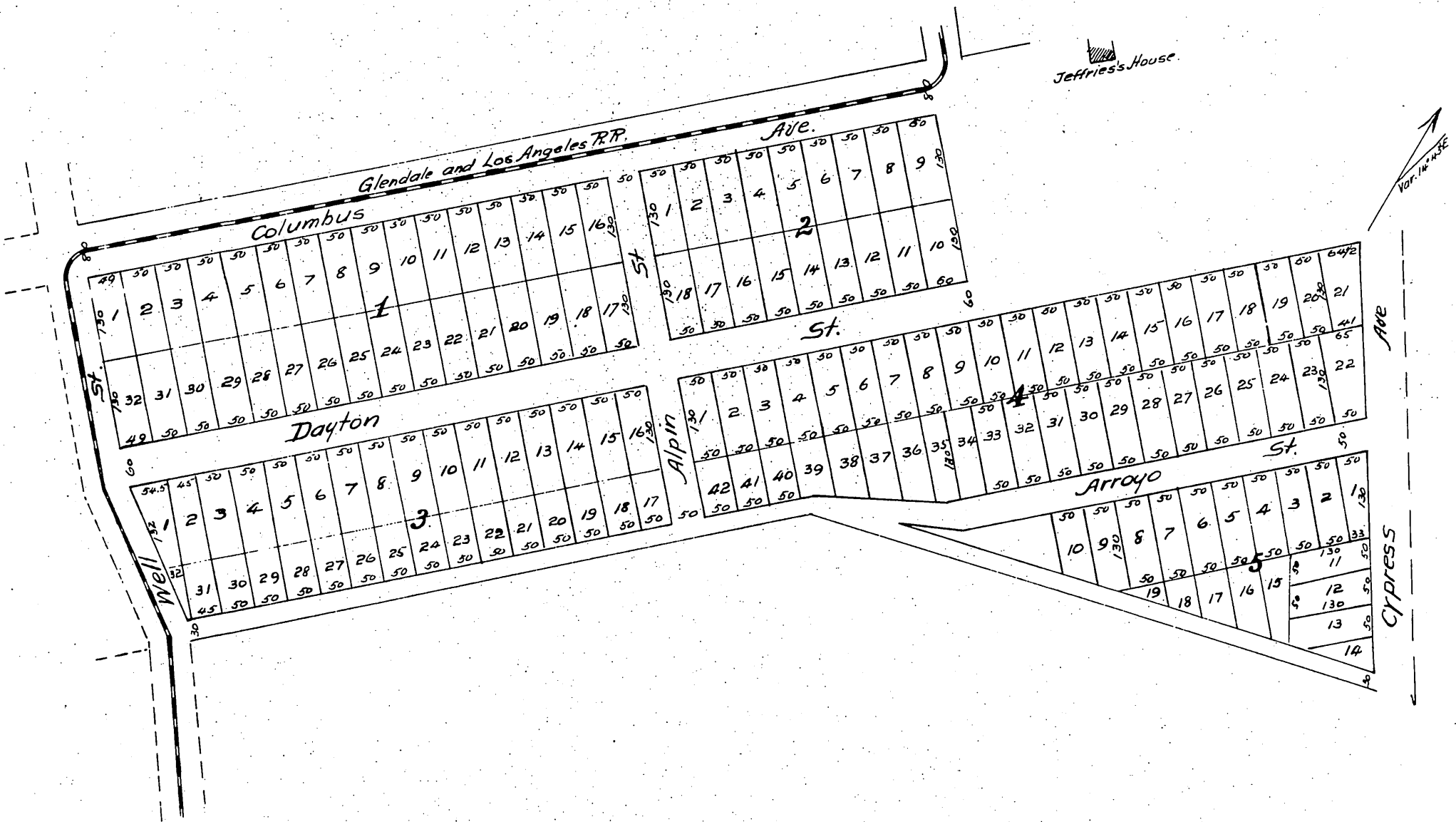


Map
OF THE
SUBDIVISION OF THE EASTERN PORTION
OF
Jeffries Tract

East Los Angeles.

Scale 100 feet to one inch

For sale by Asa Adams.
No 12 Court St. Los Angeles.



A full true and correct copy of the original (reduced to an exact one half size) recorded August 3rd 1887 at 9^o AM at request of Asa Adams.

Frank A. Gibson County Recorder.
by George Peugh Deputy.