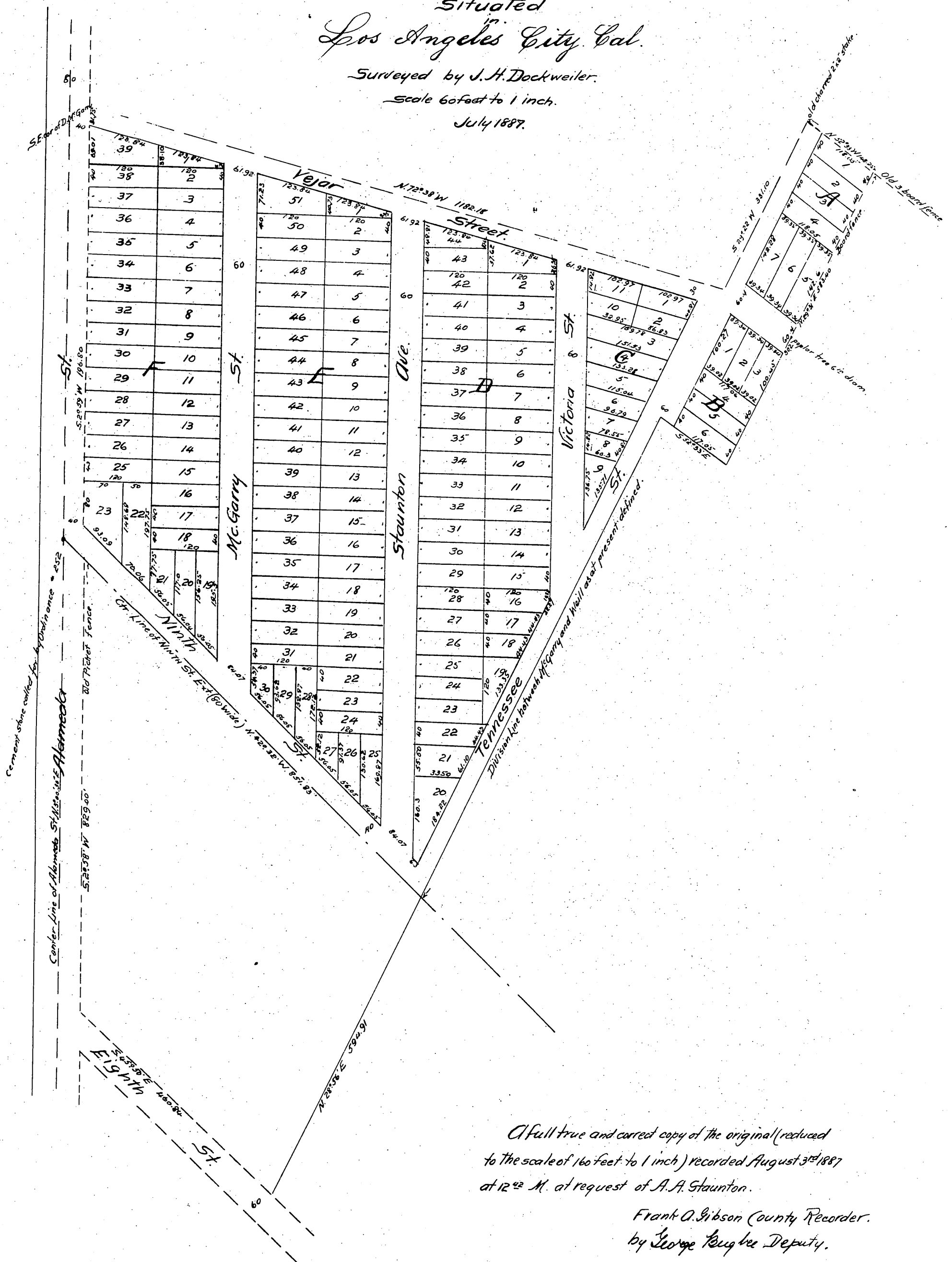


Map of the McGarry Tract

Situated in Los Angeles City, Cal.

Surveyed by J.H. Dockweiler.
Scale 60 feet to 1 inch.
July 1887.



A full true and correct copy of the original (reduced to the scale of 60 feet to 1 inch) recorded August 3rd 1887 at 12⁴² M. at request of A.A. Staunton.

Frank A. Gibson County Recorder.
by George Rugeley Deputy.