

Dorland Baldwin and Rusts Subdivision

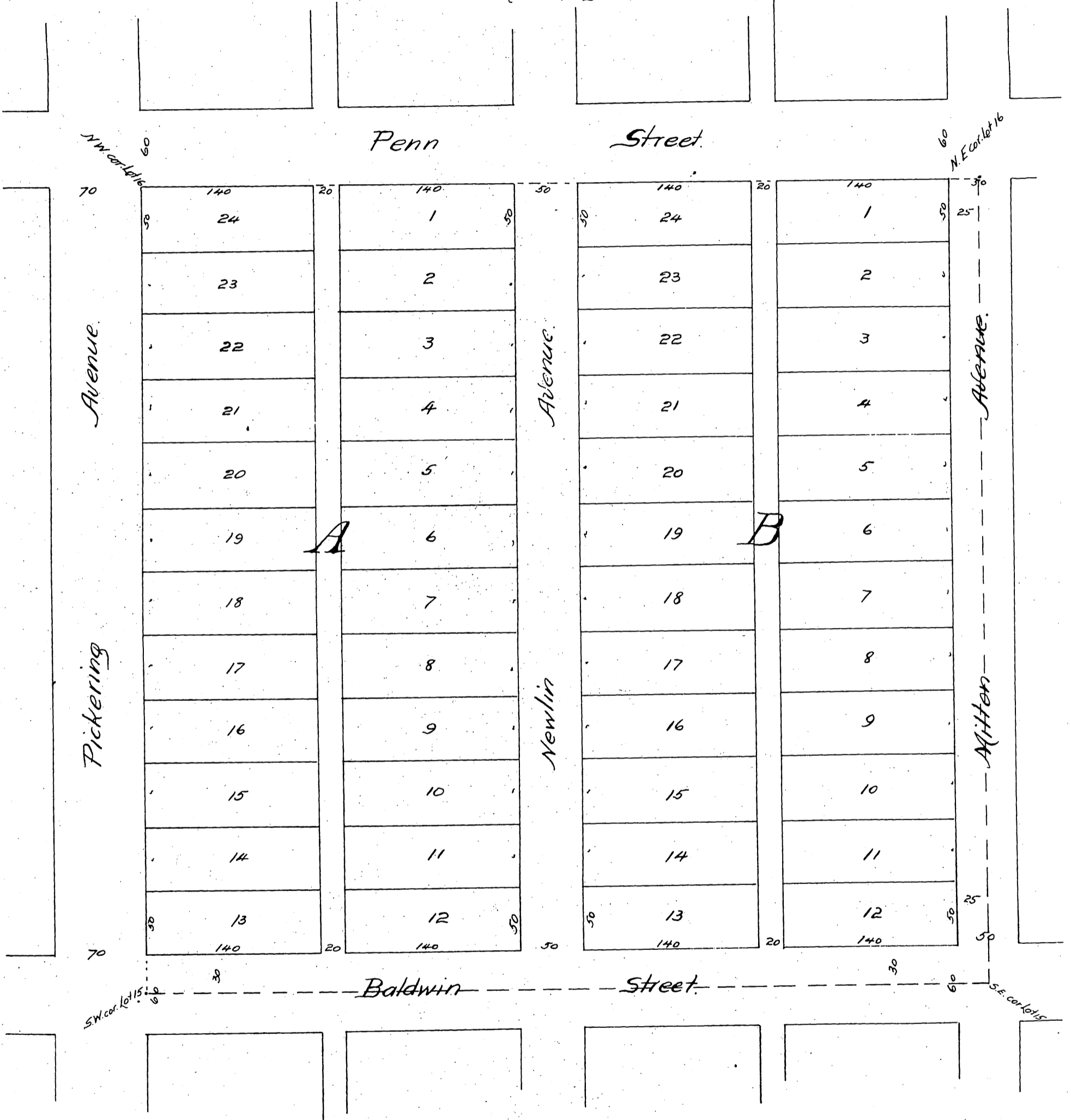
of Lots 15 and 16 Block K

PICKERING LAND and WATER CO'S. SUBDIVISION.

Surveyed 1887 by Baldwin Jessup and Co

Scale 80 feet to 1 inch

Cambell and Marsh Draughtsman.



A full true and correct copy of the original recorded
 August 4th 1887 at 8³⁰ AM at request of Dorland Baldwin and Rust
 Frank A. Gibson, County Recorder.
 by George Raugbee Deputy.