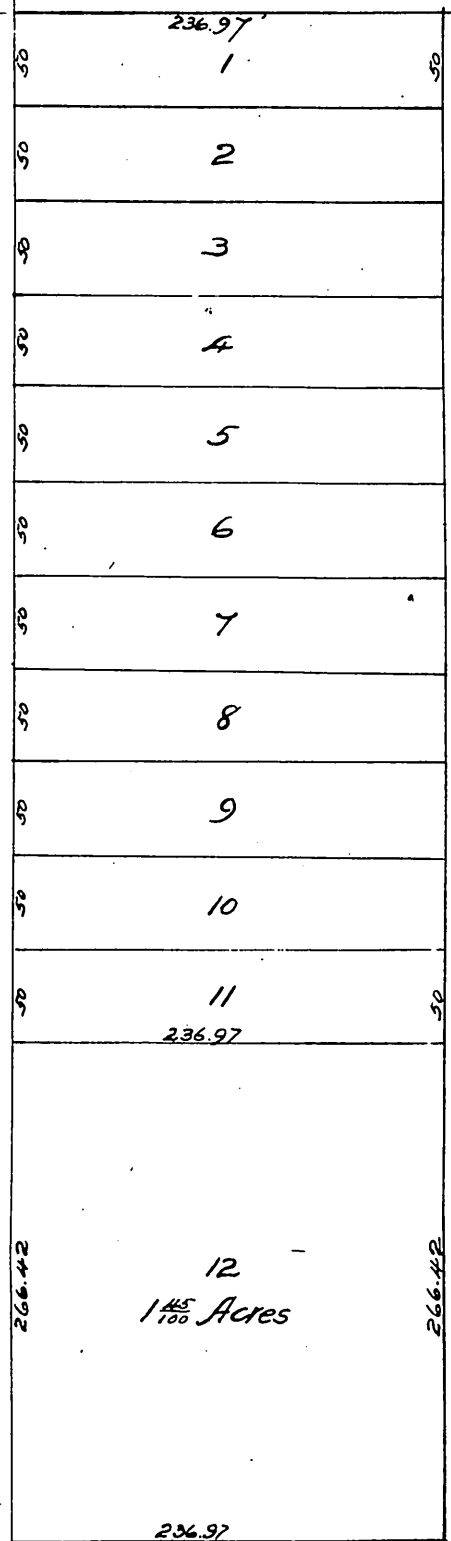


4 2 1 2 4

Western Avenue



# Map

Showing a Subdivision of a part of Lot Allotted to Charles C. Eschrich in Decree of Partition of the Estate of C. C. Eschrich.

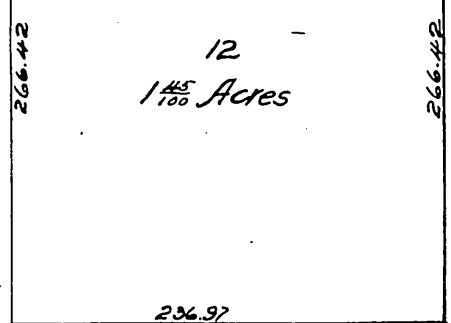
Made in June 29<sup>th</sup> 1887 Los Angeles County Cal by J. A. Bernal.

Deputy County Surveyor.

Scale 100 feet to an inch.

Western

693.66



236.97

Stuart  
S.W. Cor. of N.W. 1/4 of Sec 36 T15R14W S.B.M.

Washington Street

A full true and correct copy of the original recorded August 3<sup>rd</sup> 1887 at 3 1/2 P.M. at request of P. T. Matthews. Frank A. Gibson, County Recorder by Geo. Bugbee, Deputy.