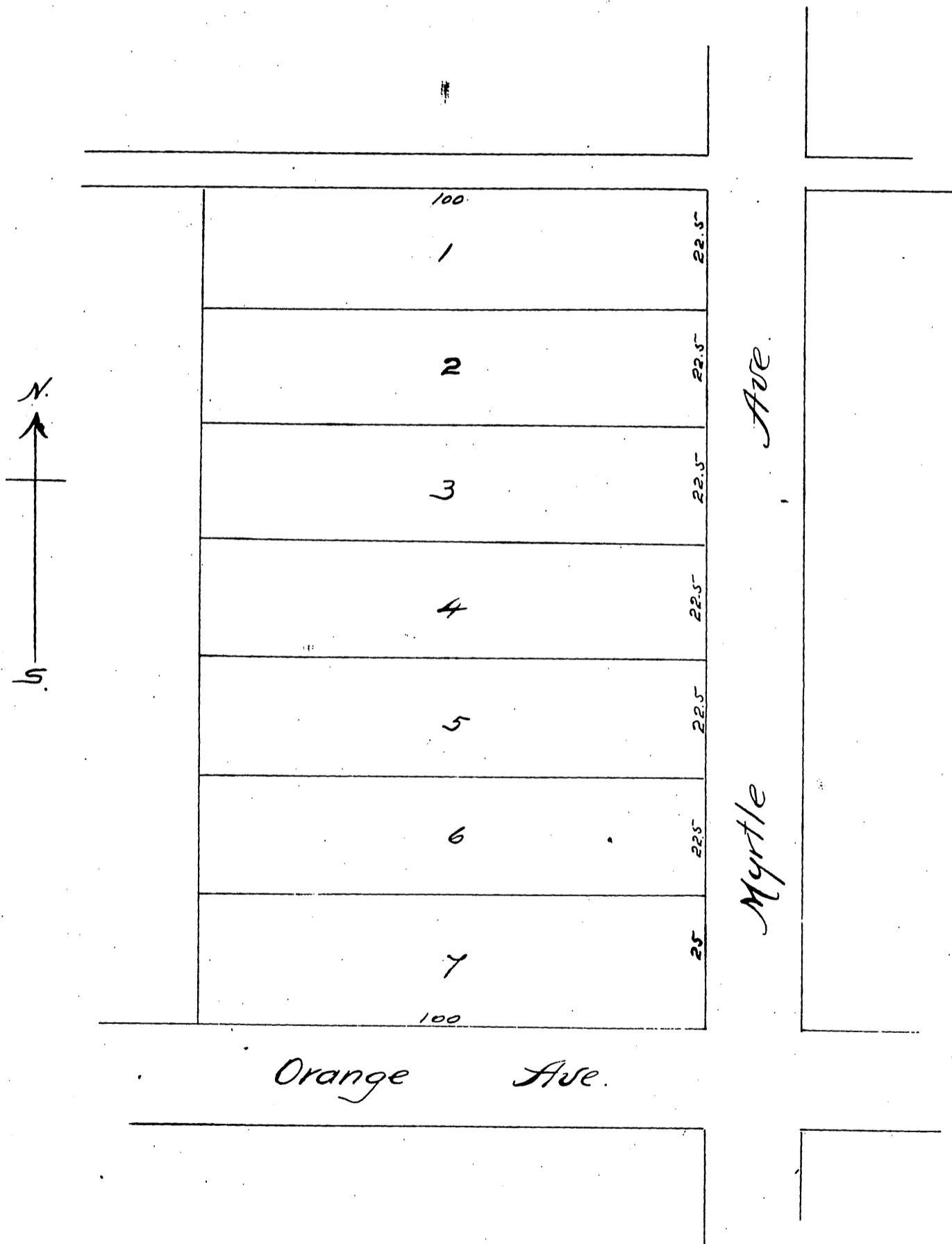


MYERS
 SUBDIVISION
 of
 Lots 23 & 24 Blk L.
 Monrovia
 Los Angeles Co. Cal.
 Surveyed by J.S. McDonald C.E. Monrovia
 Scale 1 inch = 25 ft.



A full true and correct copy of the original recorded
 August 4th 1887 at 10²⁵ AM at request of F.N. Myers.
 Frank A. Gibson, County Recorder.
 by Geo. Bugbee, Deputy.