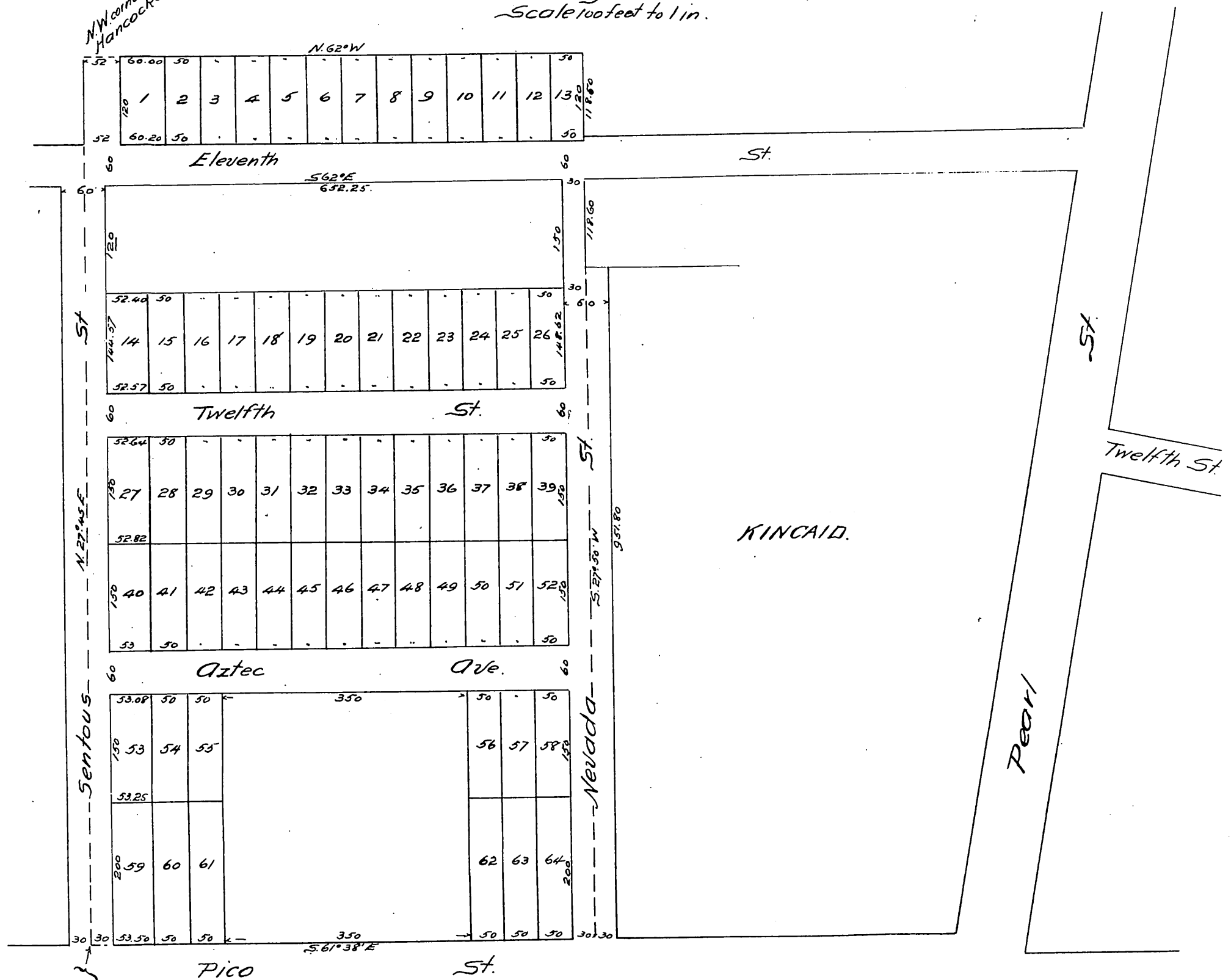


Map of

Forman's Subdivision

of the West 20 acres of Lot 8 Block 36 Hancock's Survey
Los Angeles Cal.
Scale 100 feet to 1 in.



A full true and correct copy of the original (reduced to the scale of 160 feet to an inch) recorded August 4th 1887 at 11 A.M. at request of Cha's Forman.
 Frank A. Gibson County Recorder
 by Geo. Tughee. Deputy.

State of California }
 County of Los Angeles } s.s.

Fred Eaton being first duly sworn on oath deposes and says, that in a map of Forman's Sub-division of the West twenty acres of Lot 8 Block 36 Hancock's Survey Los Angeles City, surveyed by him and filed for record in the County Recorder's office of said Los Angeles County. There is a clerical error by which the distance from the Southeastery corner of Eleventh and Sentous Streets to the Northwestery corner of Lot 14 in said sub-division is made to appear as one hundred and twenty feet, whereas, and in fact the distance between said last mentioned points is one hundred and fifty feet and should be so delineated and marked on said map

Fred Eaton.