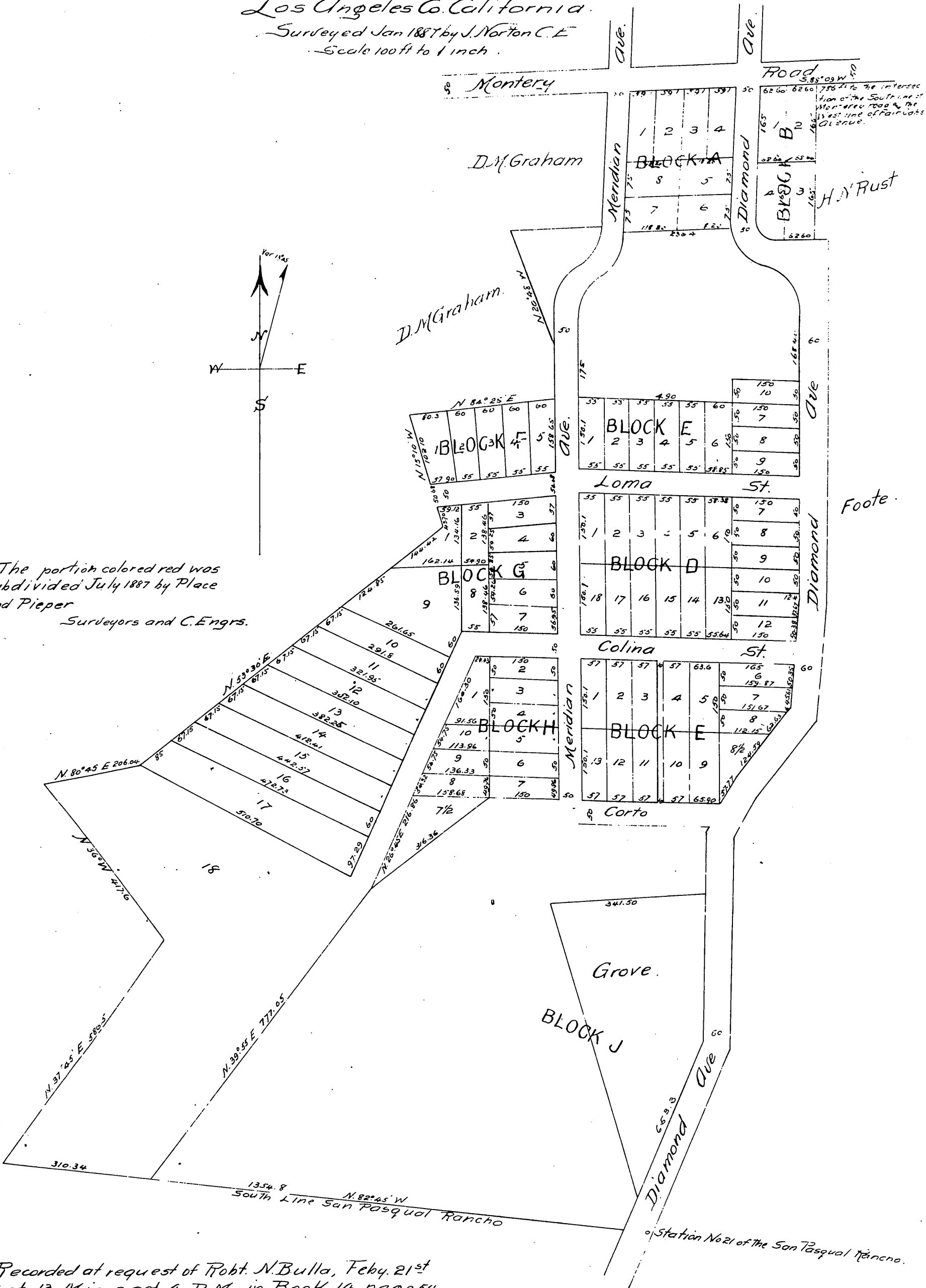


A mended Map of the Hunt Tract South Pasadena.

Los Angeles Co. California.
Surveyed Jan 1887 by J. Norton C.E.
Scale 100ft to 1 inch.



Note: The portion colored red was
Subdivided July 1887 by Place
and Pieper
Surveyors and C. Engrs.

Recorded at request of Robt. N. Bulla, Feby. 21st
1887 at 13 Min. past 4 P.M., in Book 14 pages 54
of Miscellaneous Los Angeles County Records,
Frank A. Gibson, County Recorder
by Geo. Bugbee Deputy.

A full true and correct copy of the original
(reduced to an exact one half size) recorded
August 5th 1887 at 8²⁷ A.M. at request
of Robt. N. Bulla
Frank A. Gibson, County Recorder,
by Geo. Bugbee, Deputy.