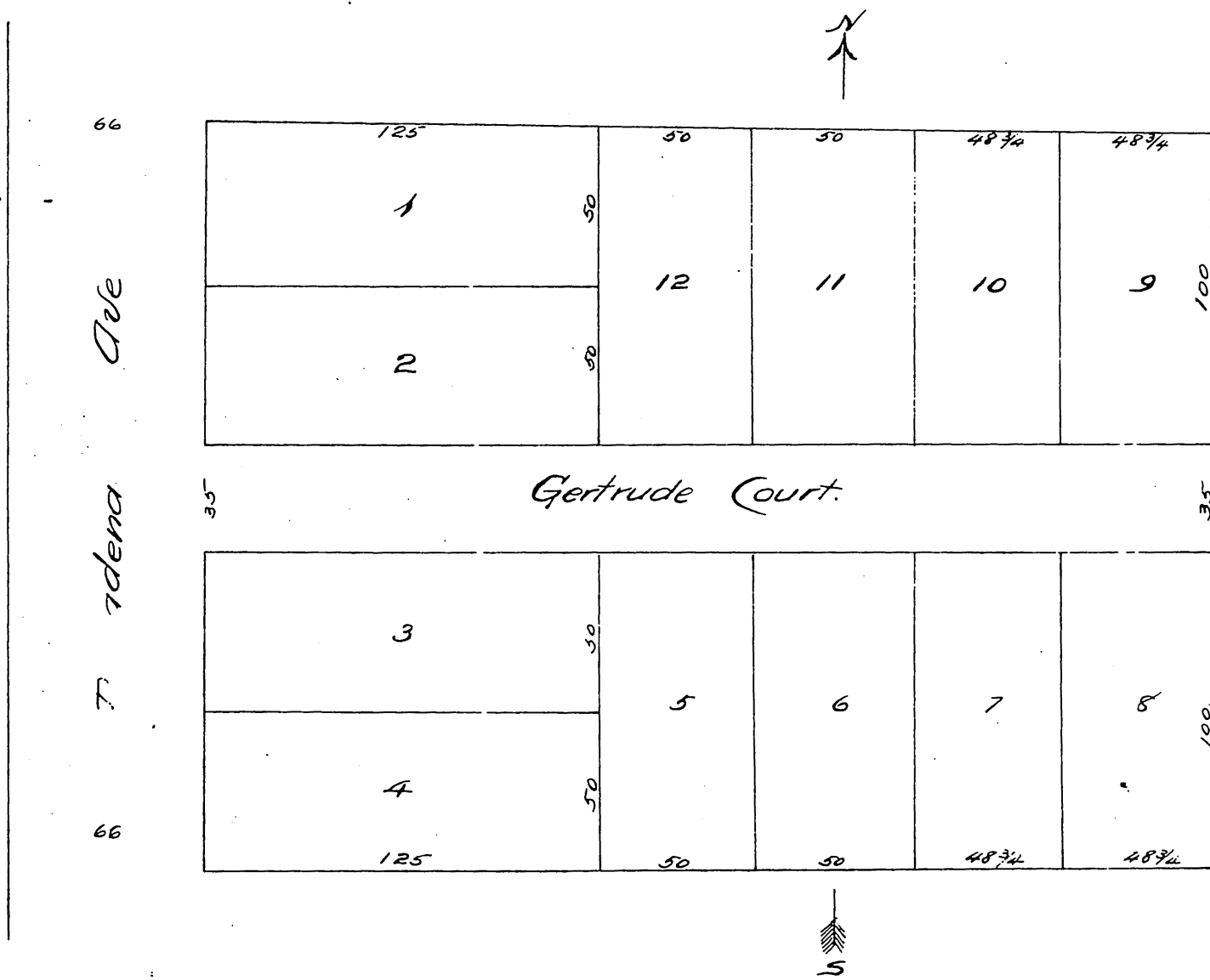


Dr. L. A. Wrights, Subdivision
of

Lots 16 and 17 of Washburn's Subdivision of Lot 8 Div. C
of the
Berry and Elliott Tract
Pasadena.



A full true and correct copy of the original
recorded August 5th 1887 at 10³⁴ AM at
request of Dr. L. A. Wright.
Frank A. Gibson, County Recorder,
by Geo. Kugler, Deputy.