

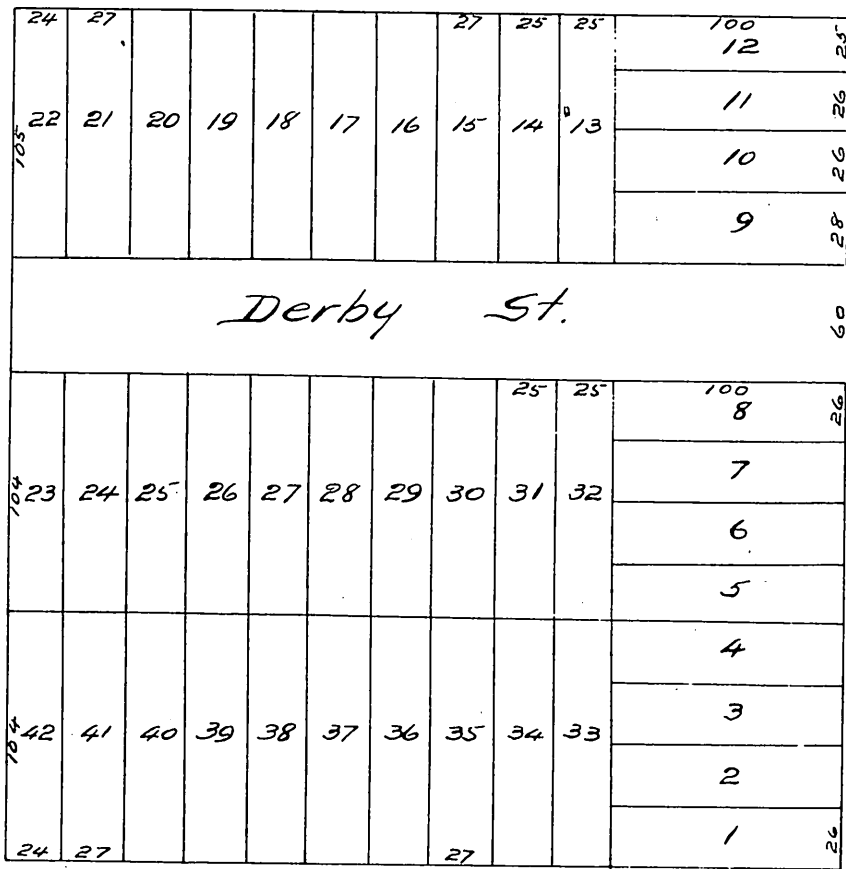


# Amended Map of the Park Station Tract.

Situated in the S.E. Cor. of the S.E. 1/4 of Sec. 17 T25N. 14W. S.B.M.

Los Angeles, Cal.

The property of *Miltimore & Morrill*  
Surveyed May 5<sup>th</sup> 1887 by *John Goldsworthy*,  
County Surveyor.  
Scale 40ft to the inch.



I certify that Troy Street as per Map recorded  
in Book 16 P. 71 Miscellaneous Records was va-  
cated Aug. 21 1887. By order of Board of Sup-  
erisors of Los Angeles County Cal.  
C. H. Dunsmoor.  
Clerk.

A full true and correct copy of the original  
(reduced to an exact one half size) recorded August  
6<sup>th</sup> 1887 at 10<sup>23</sup> AM at request of *Miltimore & Morrill*  
Frank A. Gibson, County Recorder.  
by Geo. Bangs, Deputy.