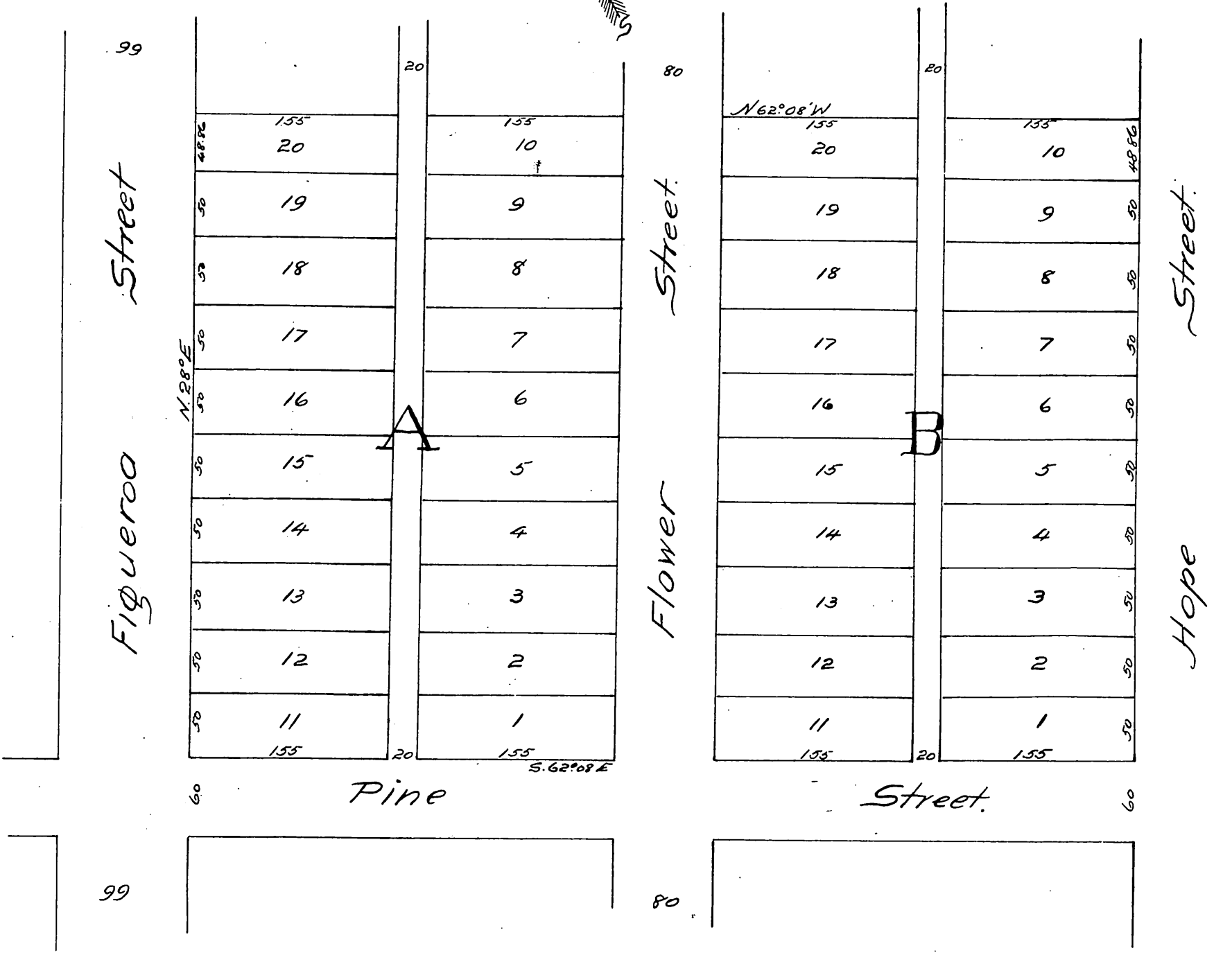
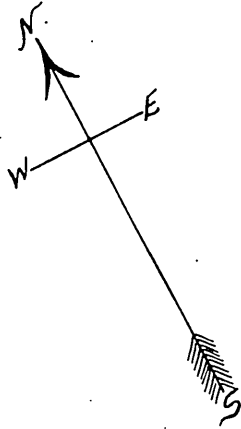


Map
of
J.H. Bryan's
Figueroa Street Subdivision.
Los Angeles Cal.
J. H. Sterenson Surveyor 1887
Scale 50 feet to one inch.



A full true and correct copy of the original (reduced to an exact one half size) recorded Aug 6th 1887 at 2:30 P.M. at request of J.H. Bryan.
Frank A. Gibson, County Recorder.
by Geo. Bugbee, Deputy.