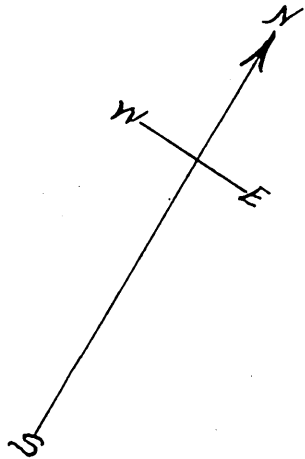
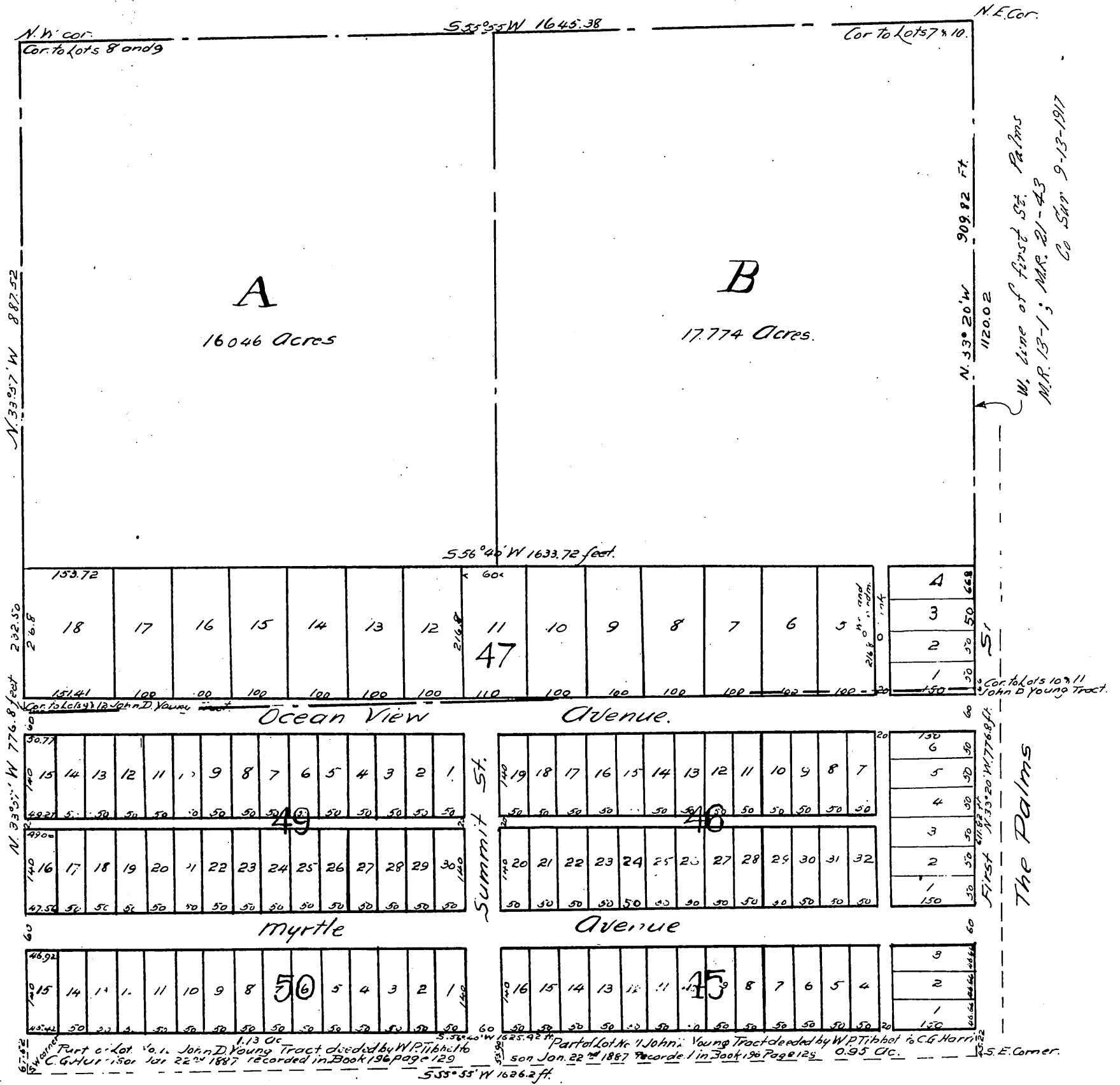


Harrison Curtis and Sweetser's Western Addition to The Palms

Being a Subdivision of portions of Lots 9, 10, 11 & 12 of the John D. Young Tract.

Surveyed by John Goldsworthy July 7th 1887.



A full true and correct copy of the original (reduced to the scale of 200 feet to an inch) recorded August 6th 1887 at 3⁴⁴ P.M. at request of Harrison Curtis and Sweetser.

Frank C. Gibson, County Recorder
by Geo. Langbe Deputy.