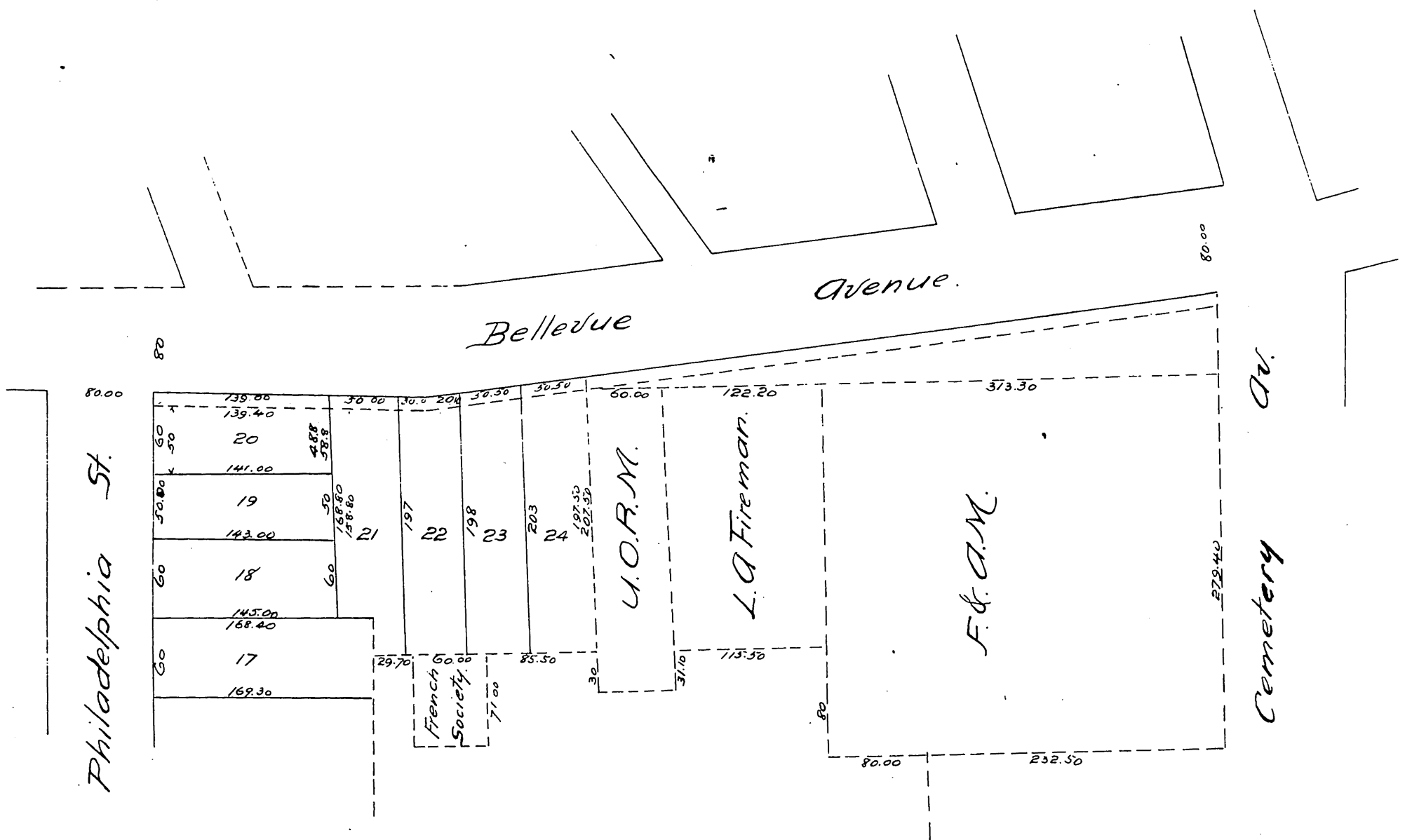




*Plat*  
of  
*Bellevue Avenue.*  
From Cemetery Avenue to South Philadelphia Street  
in the  
City of Los Angeles.

*Showing thereon the alignment of said street as graded and indicated on the ground by the curbing of the sidewalk and its relative location to the South line of proposed change in Street as shown on a Map of Block H. Fort Hill Tract recorded in Book 6 Page 61 of Miscellaneuous Records of Los Angeles County, and also the increased frontage of Lot 20 and increased depths of Lots 21, 22, 23 and 24 of said Block H. of the Fort Hill Tract by reason of the error in said alignment.*

*Scale 100 feet to one inch.*



*Note.*

*Fences -----*

*South line of proposed change in Street as shown in Book 6 Page 61 Misc. Rec. Figures in red show frontage of Lot 20 and depths of Lots 21, 22, 23, and 24 as given in Book 6 Page 61 of Misc. Rec. — Figures in black show correct frontage of Lot 20 and correct depths of Lots 21, 22, 23, and 24*

*A full true and correct copy of the original recorded August 8<sup>th</sup> 1887 at 10<sup>20</sup> A.M. at request of F.G. Teed Clerk of City Council  
Frank A. Gibson, County Recorder  
by Geo. Baybee. Deputy.*