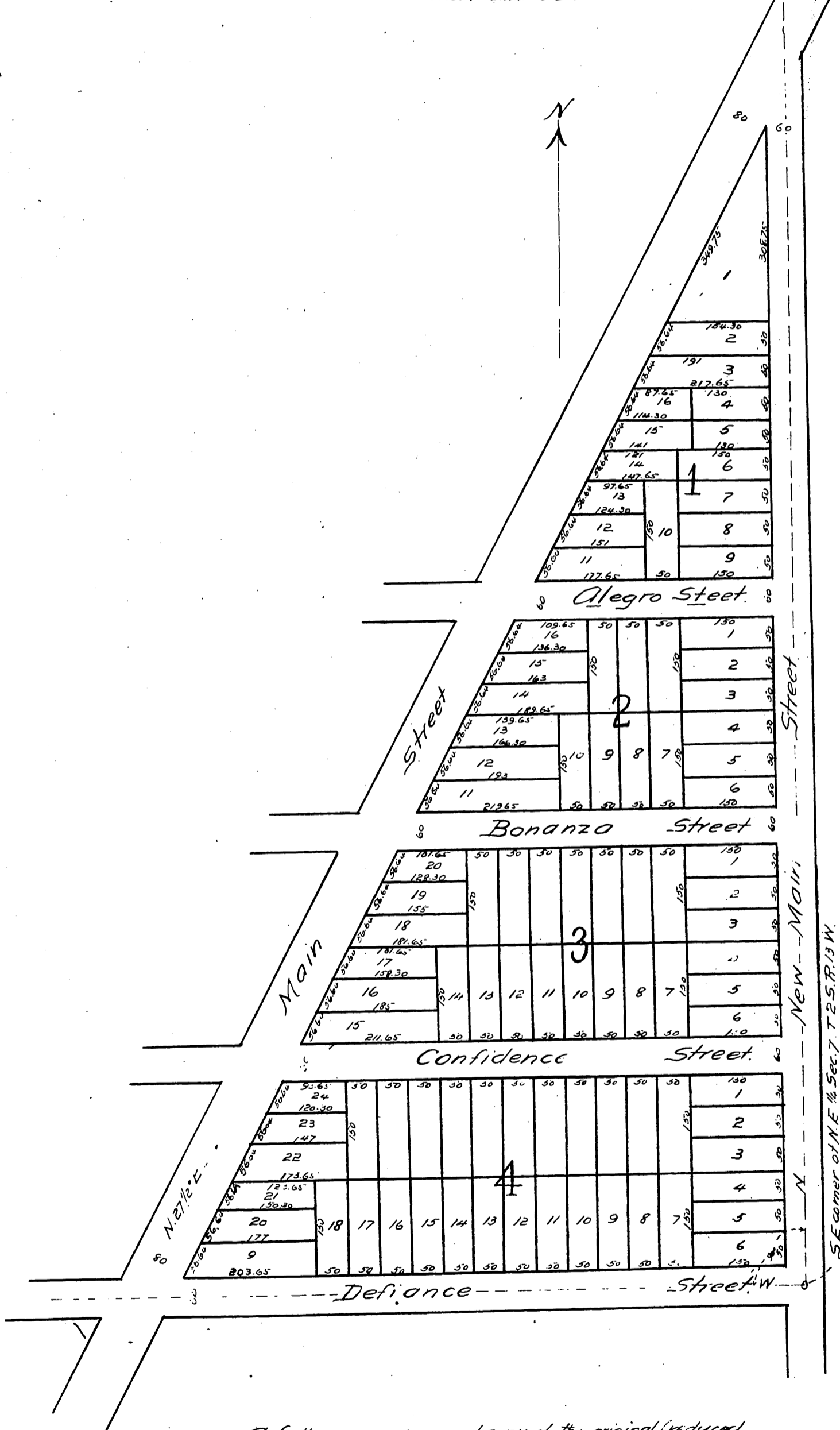




Map  
of  
Zoebelein's Main Street Tract  
In the N.E. 1/4 of Sec. 7 T2 S, R13 W. S.B.M.  
Los Angeles, Cal.  
Scale one inch to 100 ft. Var. 14.45' E.



Recorders  
The numbers on Lots 17, 18 and 19 Block 2 Lots 21 to 27 both inclusive  
of Block 3 and Lots 25 to 35 both inclusive of Block 4 were omitted on  
original map.

A full true and correct copy of the original (reduced  
to the scale of 175 feet to the inch) recorded August 27th 1887  
at 11:12 A.M. at request of Geo Zoebelein.  
Frank A. Gilson County Recorder  
By H. C. Johnston Deputy.