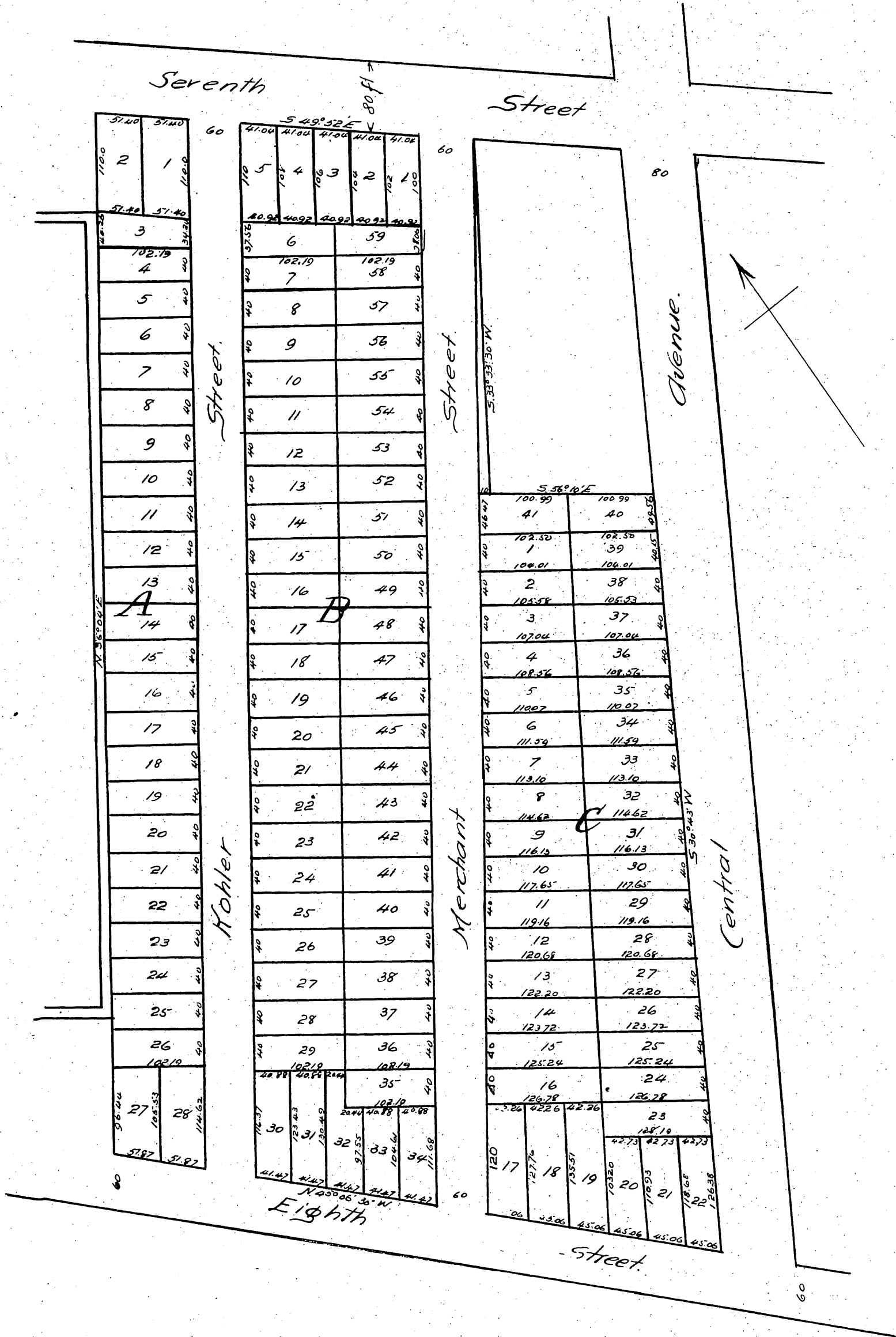


W. J. FISHER'S SUBDIVISION

of the

Kohler and Frohling Tract

Surveyed by Peicker Huber McCulloch and Co. July 1887



A full true and correct copy of the original (reduced to an exact one half size) recorded August 9th 1887 at 9:15 AM at request of W. J. Fish.

Frank A. Benson, County Recorder,
by Wm. E. Austin, Deputy.