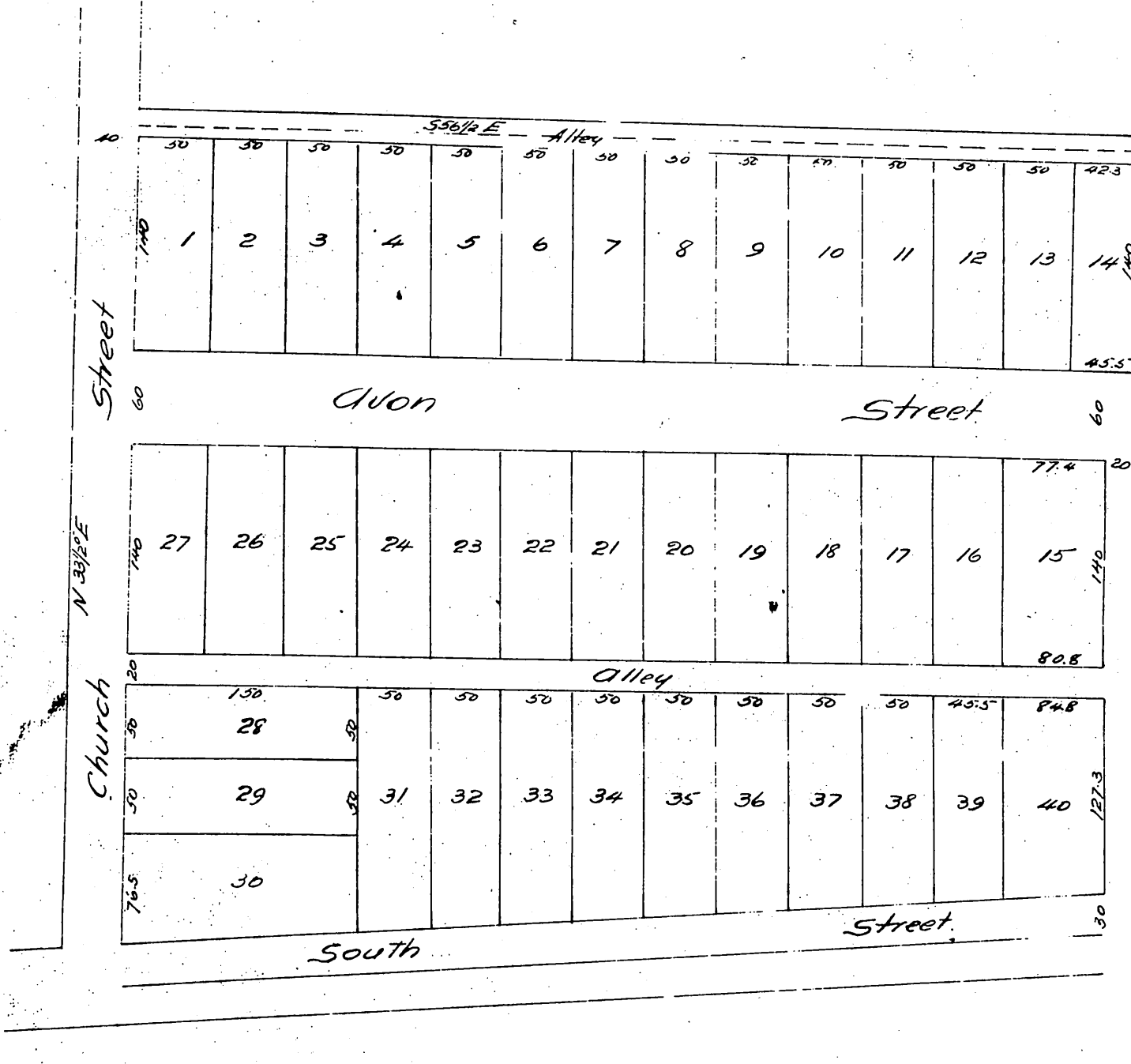


244

Crawfords Addition to DOWNEY CITY Los Angeles Co. California

Surveyed June 8th 1887 D.A. Sovereign, Surveyor.

Scale 50 feet per inch.



A full true and correct copy of the original (reduced to an exact one half size) recorded August 9th 1887 at 10⁵³ A.M. at request of M.D. Crawford.
 Frank A. Gibson, County Recorder
 by Wm. C. Johnston, Deputy.