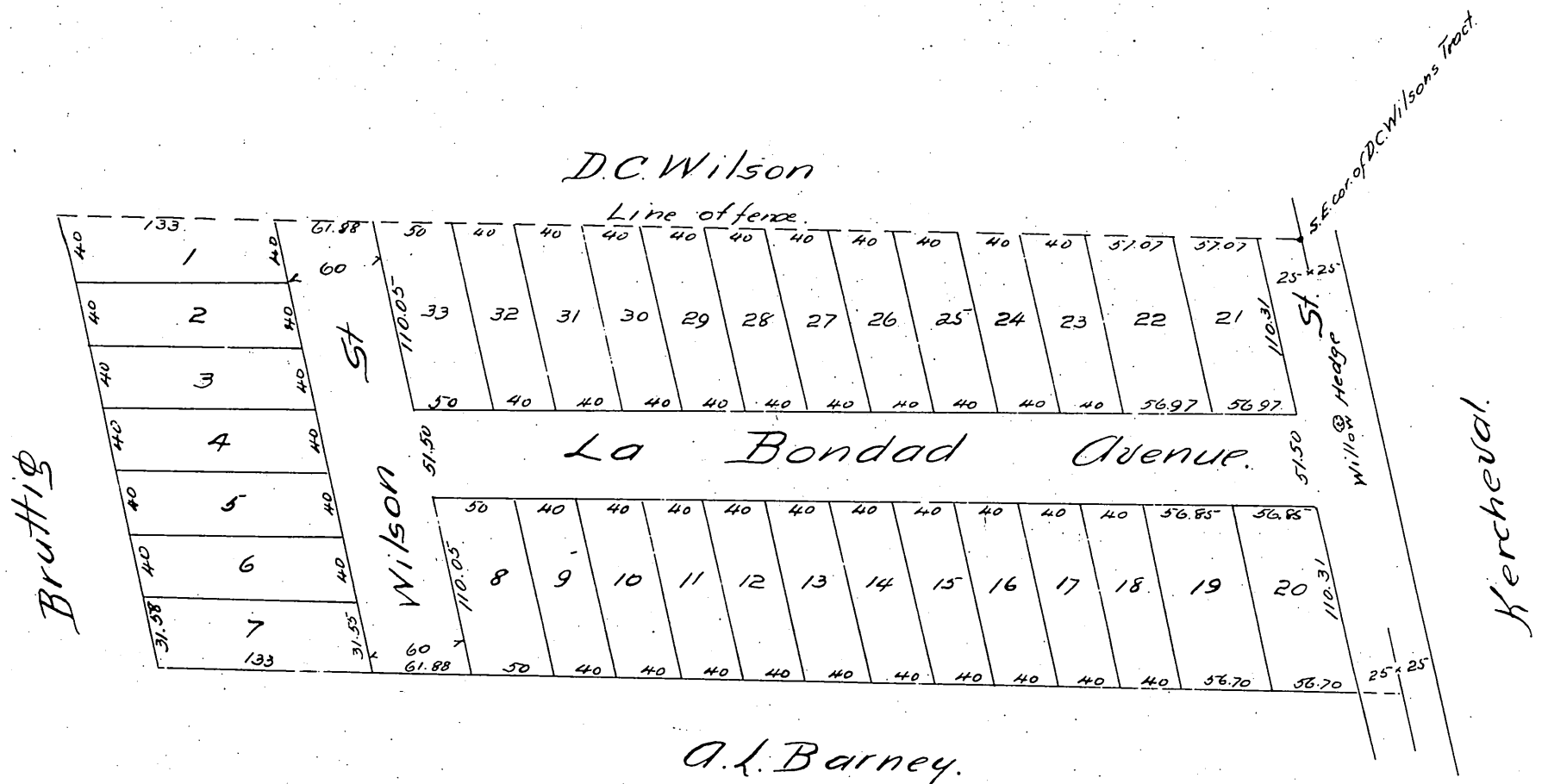


Map  
of the  
Long and Stedman Tract  
in the  
City of Los Angeles

Surveyed in July 1887 by Hing and Winston  
scale = 100ft to one inch.



A. L. Barney.

Appendix to map of Long and Stedman Tract filed for record in Book 21 page 59  
Miscellaneous Records.  
Said Long and Stedman Tract being a subdivision of the East five acres of the C. B. ... Tract in the City  
of Los Angeles, California as described in deed of Christian Bruttig to James H. Gifford and E. ...  
A. Turner dated Feb. 24<sup>th</sup> 1887 and recorded in Book 203 page 95 of Deeds in ...  
Recorder's Office.  
Hing and Winston  
by G. D. Hing member of the firm.