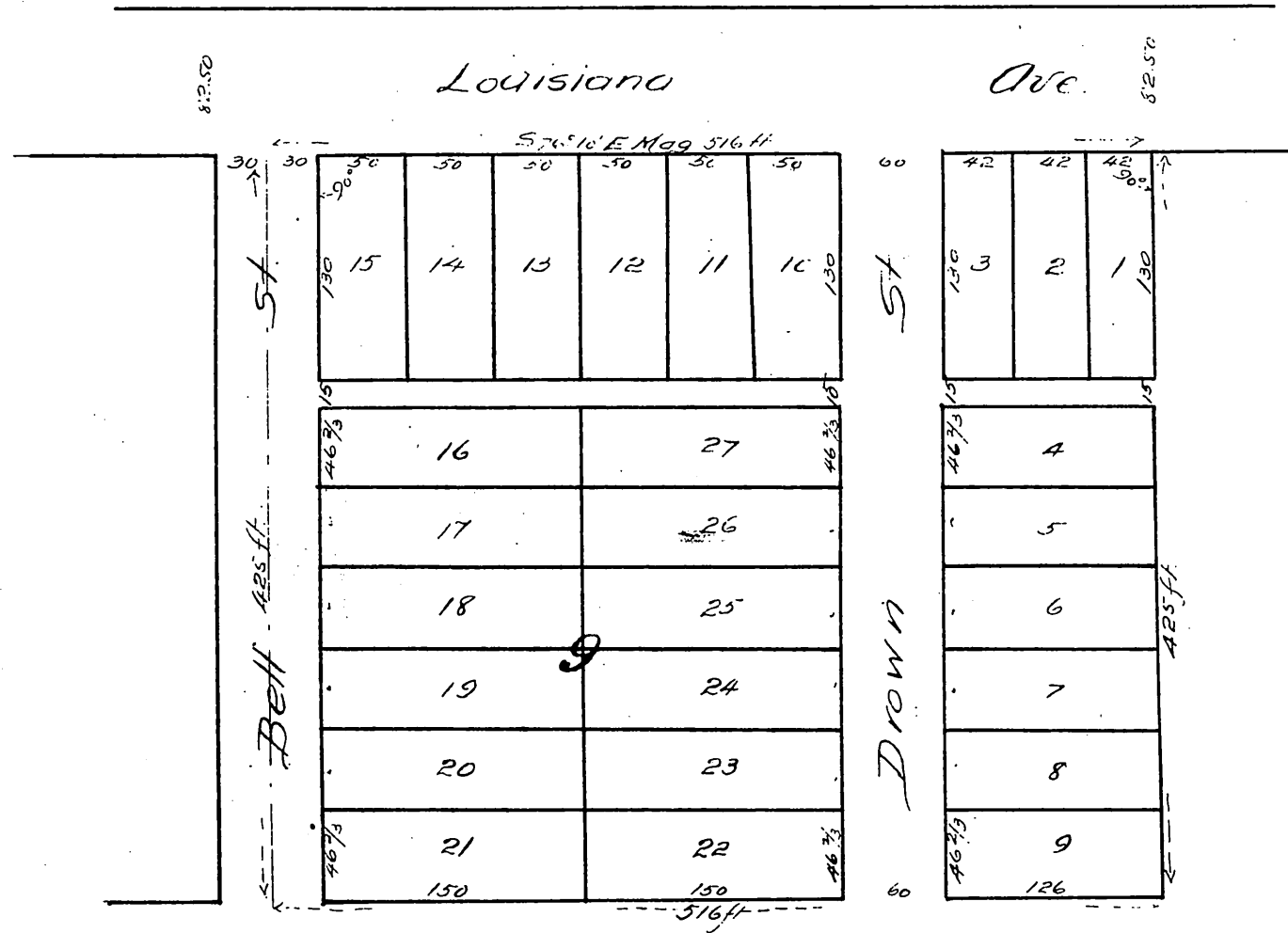
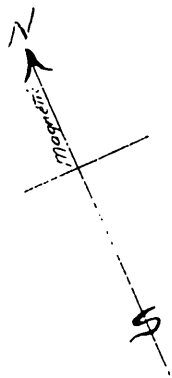


Map
of
Joseph Hyans Subdivision
of
Lot 9 of the Workman & Hellman Subdivision Boyle Heights
Los Angeles City
Surveyed in June 1887 by M^{rs} Clure Bros.
Scale 1 inch = 50 ft.



A full true and correct copy of the original (reduced to an exact one half size) recorded August 10th 1887 at 10^o A M at request of Joseph Hyans.
Frank A Gibson, County Recorder.
by W. E. Johnston, Deputy.