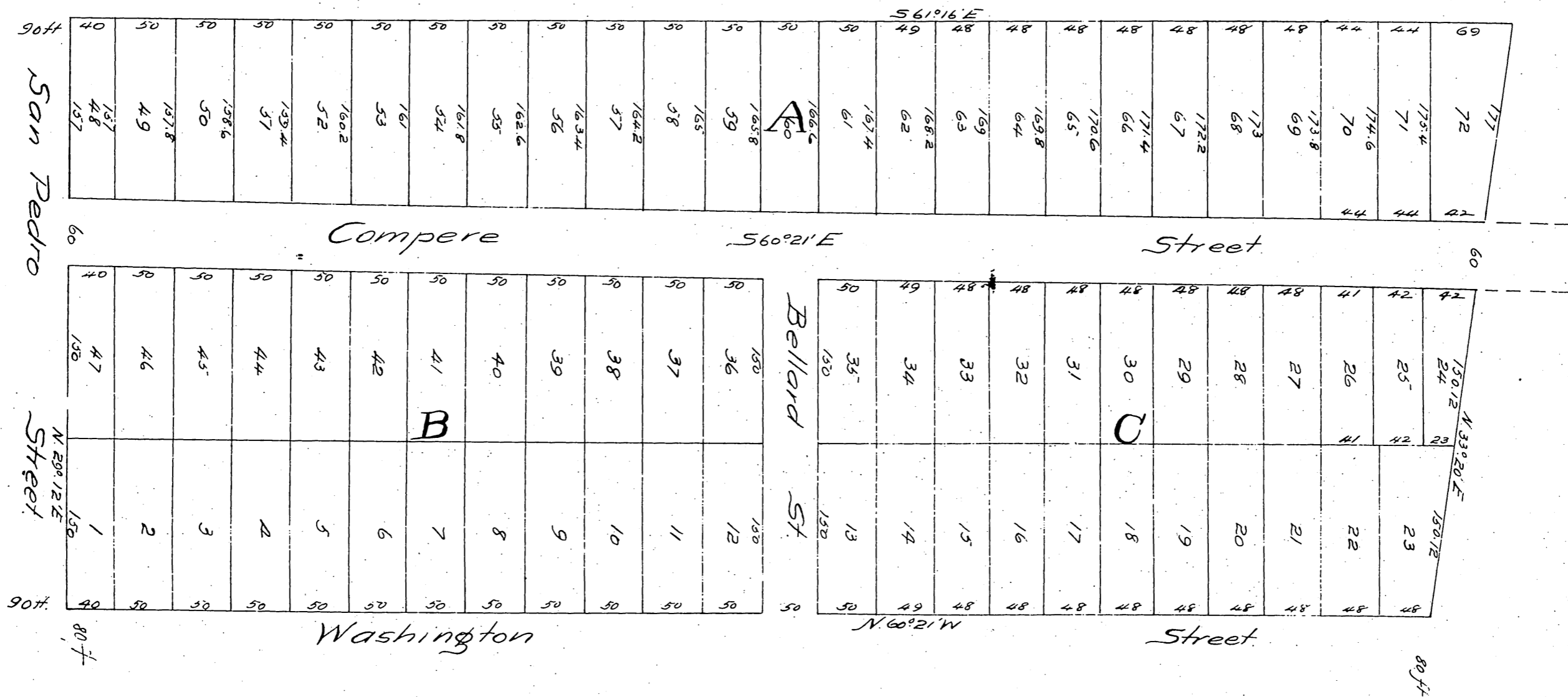


Map
 of
Washington Street Tract.
 corner of San Pedro and Washington Sts, in the City
 and County of Los Angeles,
 Surveyed by John Goldsworthy July 22nd 1887
 Scale 50 feet



A full true and correct copy of the original (reduced to an exact one half size) recorded August 10th 1887 at 10²⁵ A.M. at request of E.M. Funk.

Frank A. Gibson County Recorder
 by Wm B. Johnston Deputy.