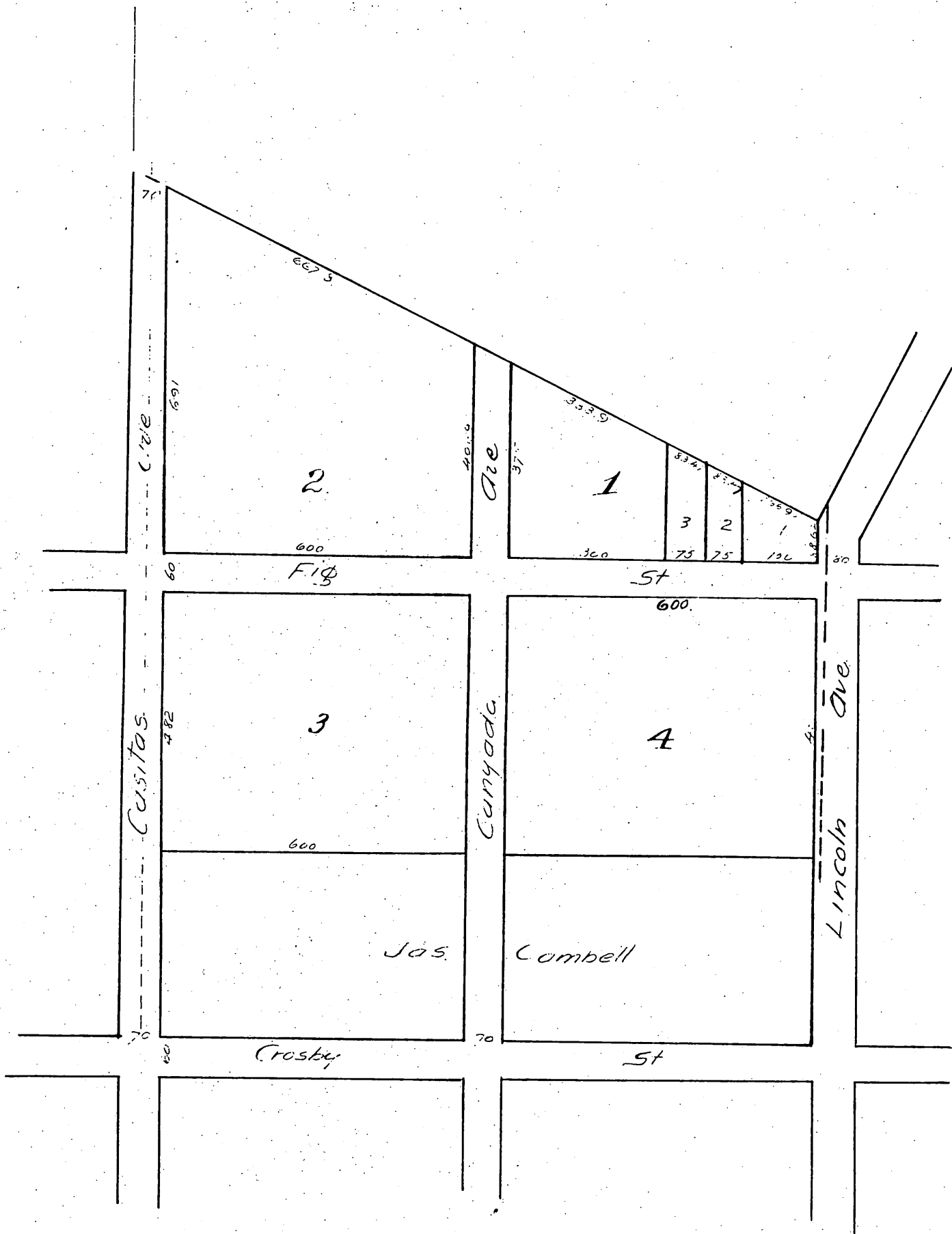


Byron O'Clark's Subdivision
of
N. 28 1/2 Acres Block C Painter and Ball Tract
Pasadena Cal
Scale 120 ft = 1 inch



A full true and correct copy of the original
shown in an exact one-half size, recorded
August 10th 1887 at 11:30 A.M. at request of
Byron O'Clark.
Frank A. Gibson County Recorder
by W. E. Johnston Deputy.