



Map of the Old Clapp Orchard

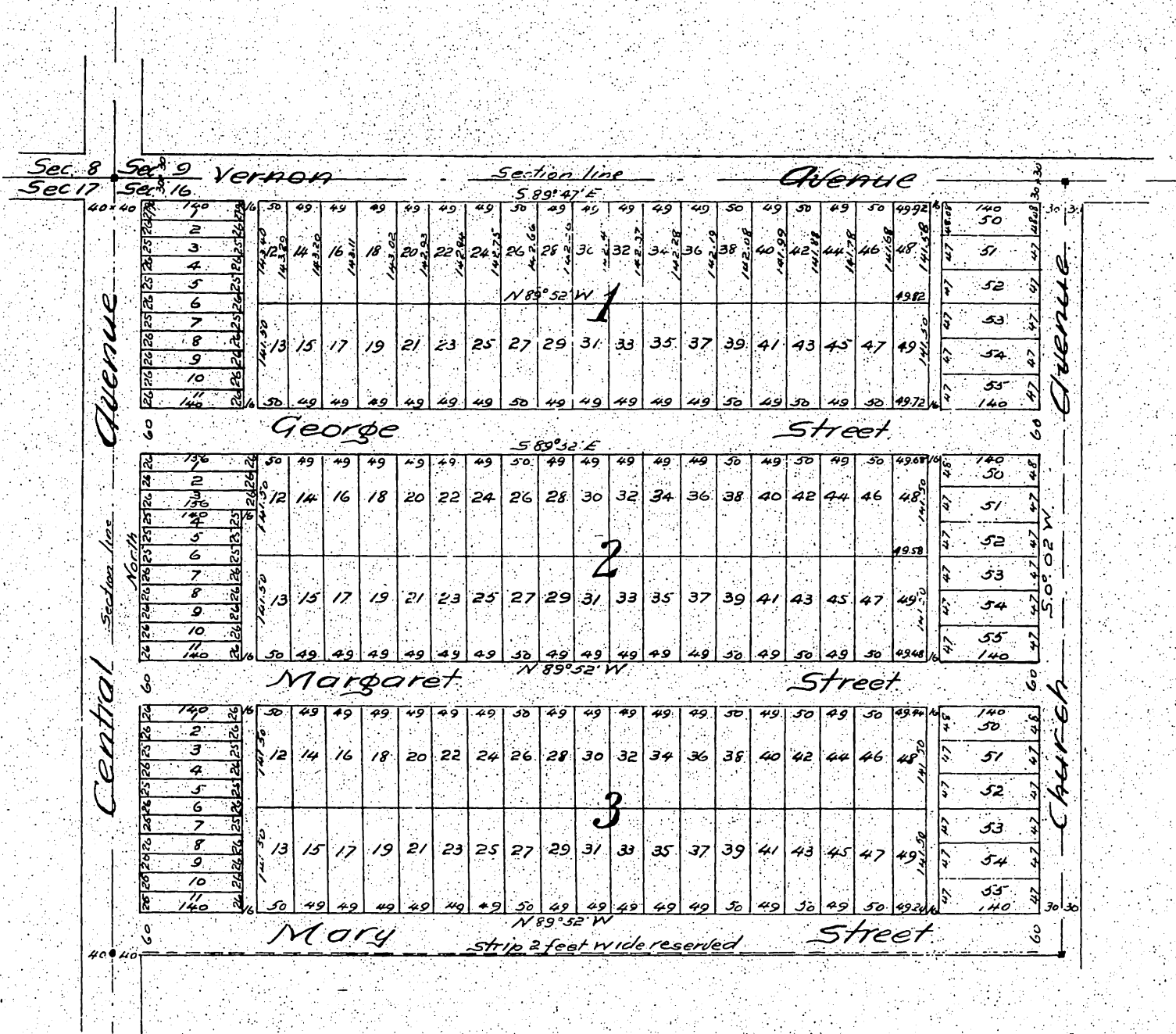
Being the Northwesterly 30 Acres of the N.W. 1/4 of N.W. 1/4 of Sec 16 T. 2 S. R. 13 W.

Los Angeles Co. Cal.

Surveyed July 1887 by E.T. Wright

Scale 100 ft. to one inch.

Margaret H. Hemms.



A full true and correct copy of the original
(reduced to an exact one half size) recorded August
10th 1887 at 3rd P.M. at request of Los Angeles Land Bureau.
Frank A. Gibson, County Recorder.
by Wm. E. Johnston, Deputy.