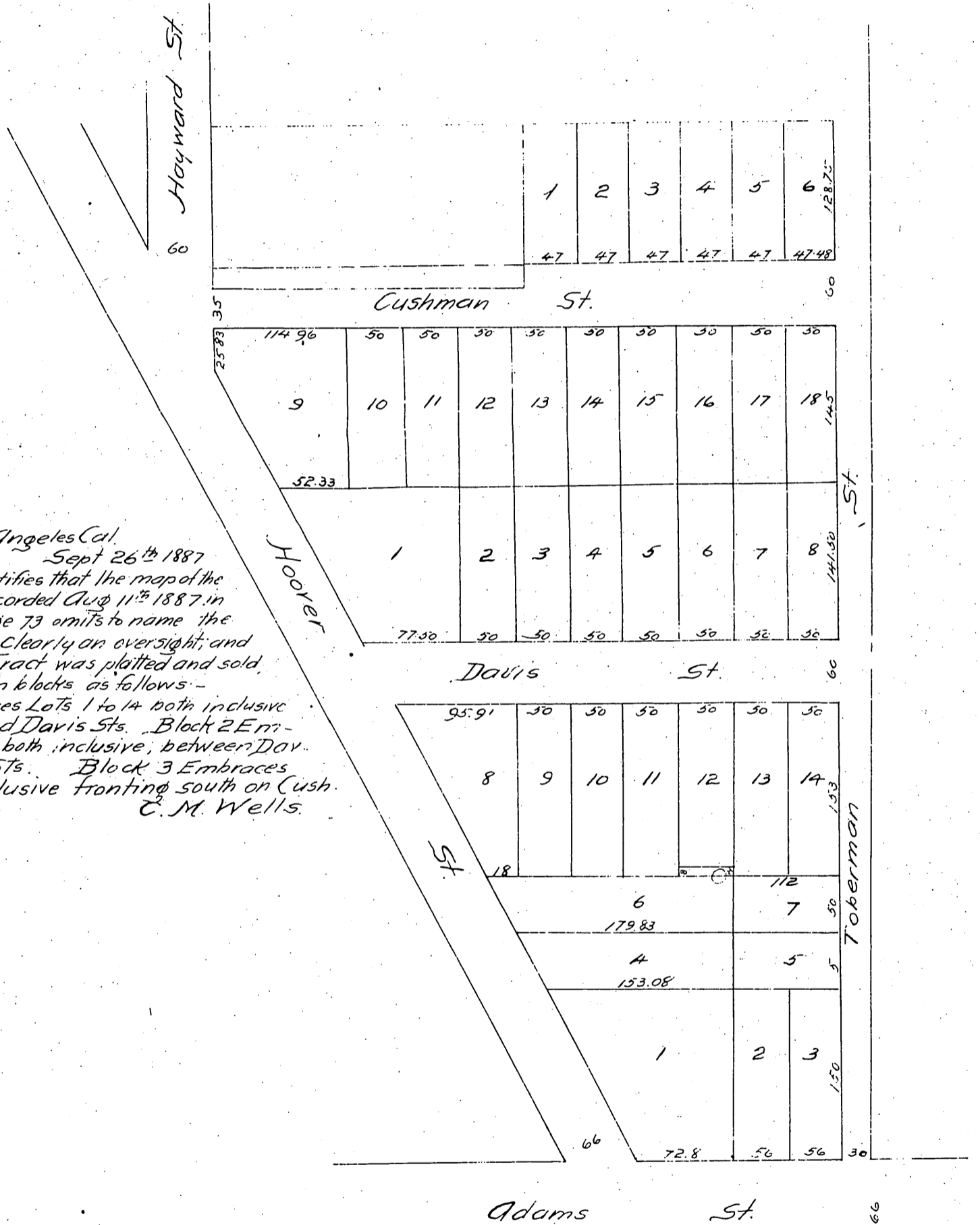


The C.M. WELLS TRACT

A subdivision of Lots 38, 39, 40, 41, 42, 43, 44, 45 and 46
of the
Hoover Tract

Surveyed and mapped by E.P. Shrader.



Los Angeles Cal. Sept 26th 1887

This paper certifies that the map of the C.M. Wells Tract, recorded Aug 11th 1887 in Book 21 of maps, Page 73 omits to name the Blocks of said Tract, clearly an oversight, and that the C.M. Wells Tract was platted and sold and now remains in blocks as follows:-

Block 1 Embraces Lots 1 to 14 both inclusive between Adams and Davis Sts. Block 2 Embraces Lots 1 to 18, both inclusive, between Davis and Cushman Sts. Block 3 Embraces Lots 1 to 6 both inclusive fronting south on Cushman St.
C.M. Wells.

A full true and correct copy of the original (reduced to an exact one-half size) recorded August 11th 1887 at 1:34 P.M. at request of C.M. Wells.
Frank A. Gibson, County Recorder.
by Wm. C. Johnson Deputy.