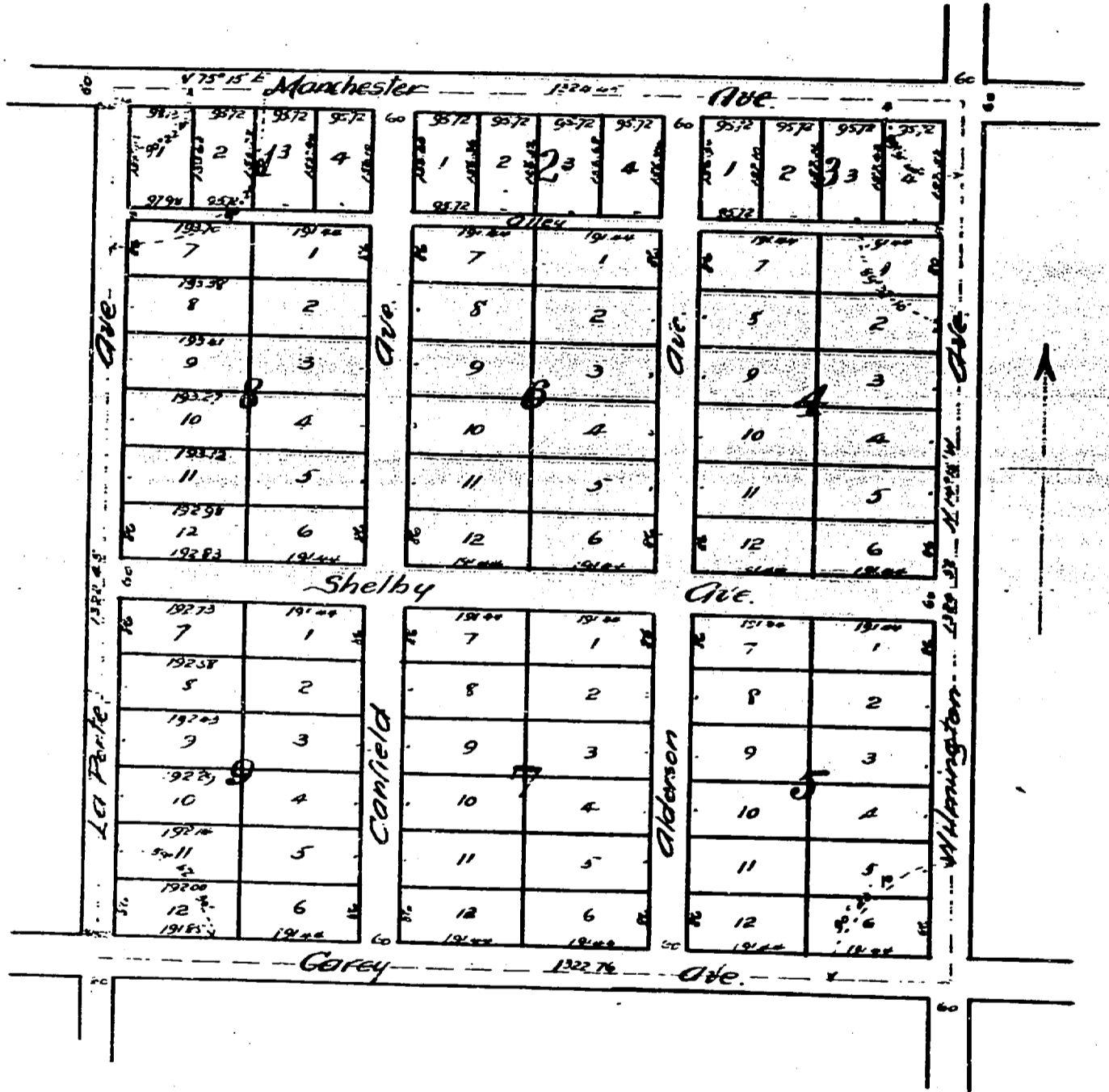


+21+70

Map

South Los Angeles,

40 acres more or less, divided into 84 Lots, Being the N.E.
 one quarter $\frac{1}{4}$ of the N.W. one quarter $\frac{1}{4}$ of Section 32.
 Township Two, South of Range 13, West San Bernardino Meridian
 Los Angeles Co. Cal.
 Surveyed by W.D. Buckner.
 Scale 200ft to one in.



A full true and correct copy of the original recorded
 September 21st 1887 at 4th P.M. at request of
 Southern California Land Co.
 Frank A. Gibson County Recorder.
 by H. C. Johnston, Deputy.