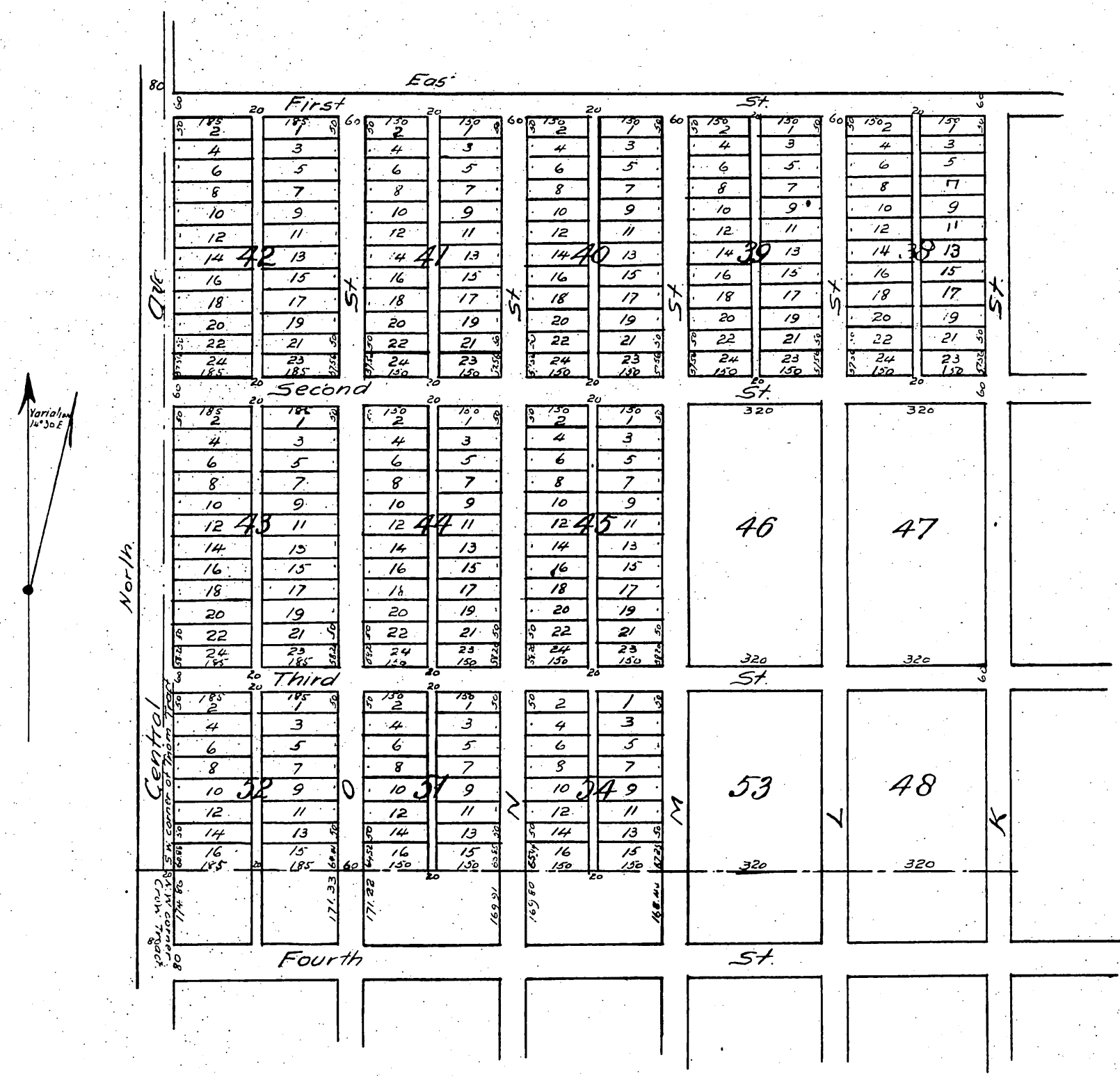


Map  
of the  
Thom and Ross Subdivision  
of Blocks  
38, 39, 40, 41, 42, 43, 44, 45, 51, 52 and 54  
of the town of  
Glendale.

Surveyed May 1887 by McClure Bros.



A full true and correct copy of the original (reduced to the scale of 300 feet to 1 inch) recorded August 13<sup>th</sup> 1887 at 4<sup>30</sup> P.M. at request of E. M. Ross.  
Frank J. Gibson, County Recorder.  
by W. E. Johnston, Deputy.