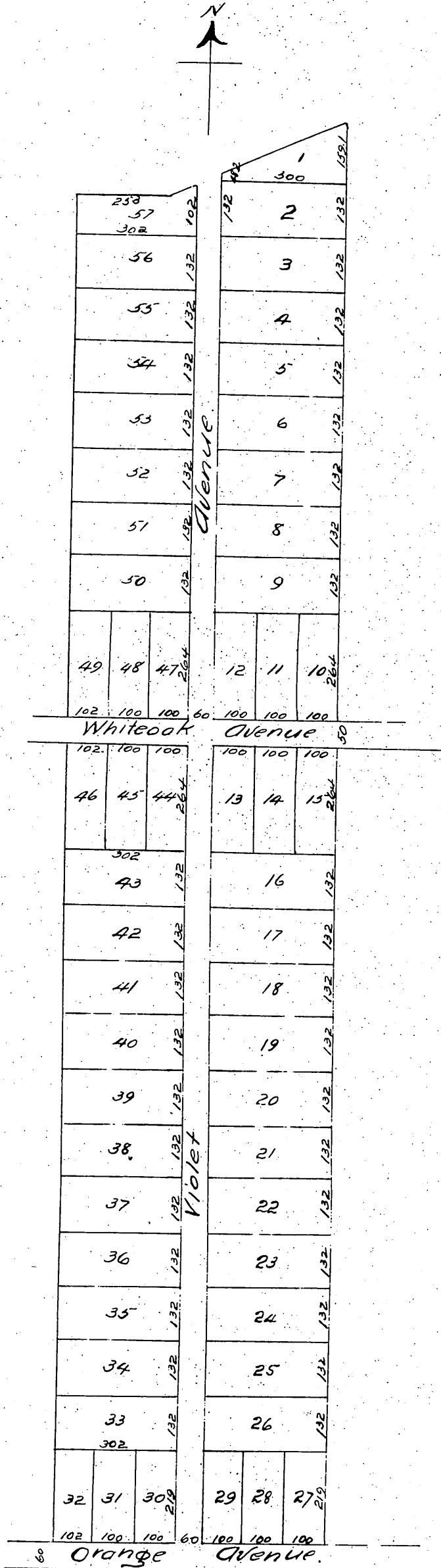


Map
of
M P and R Addition
to
MONROVIA TRACT
Being Subdivision of Lots 63^{3/4} & 47 Santa Anita Tract
Los Angeles Co Cal
Surveyed by Flanagan and Quinton
Feb 1887



A full true and correct copy of the original
recorded August 15th 1887 at 2¹⁵ P.M. at request
of E.W. Root.
Frank J. Gibson County Recorder
by Wm. O. Johnston Deputy