

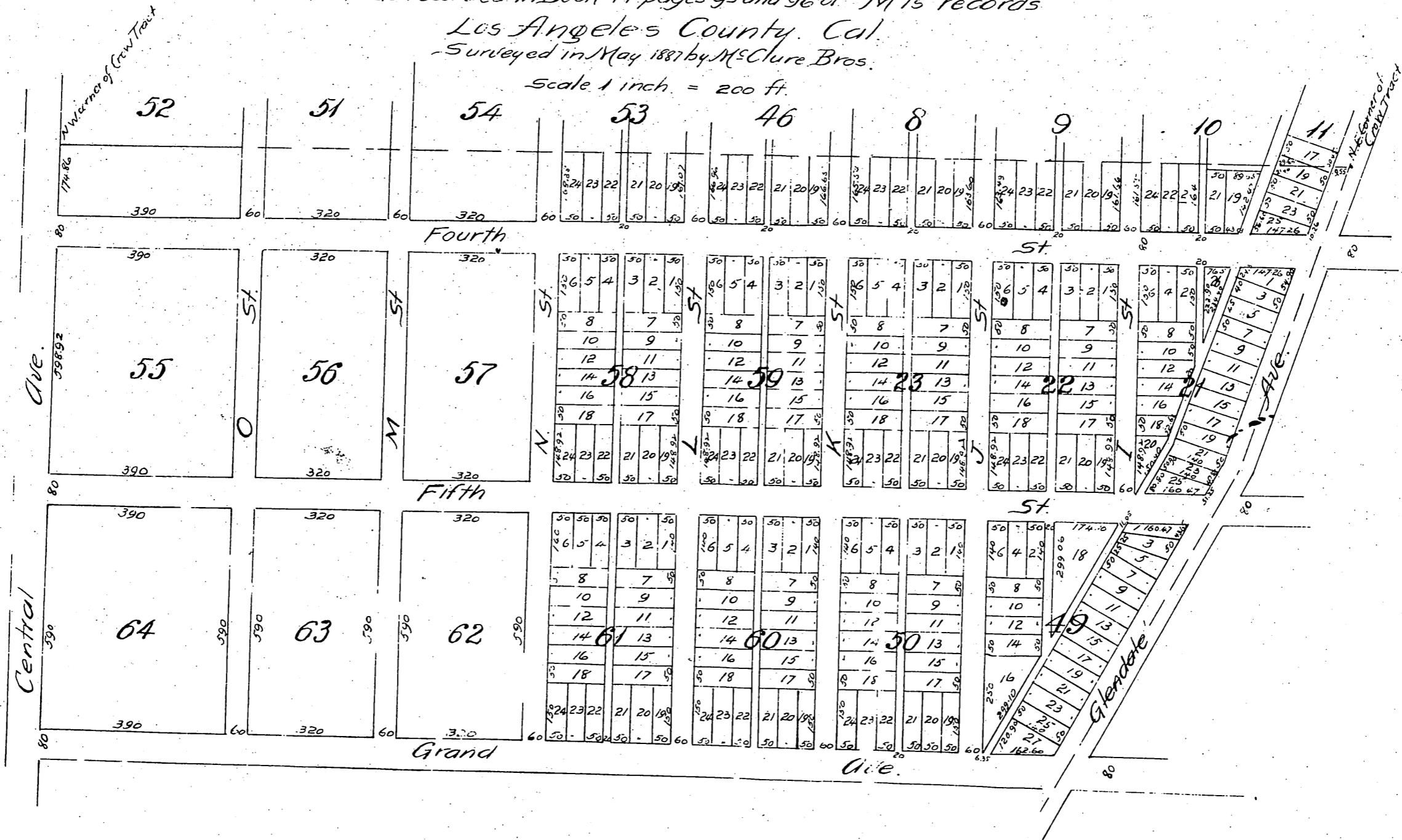
Map Showing that portion of The Town of Glendale

included within the Crow Tract, being amendatory to the same
blocks as recorded in Book 14 pages 95 and 96 of M's records

Los Angeles County, Cal.

Surveyed in May 1887 by McClure Bros.

Scale 1 inch = 200 ft.



A full true and correct copy of the original (reduced to the
Scale of 300 feet to the inch) recorded August 15th 1887 at
request of H. J. Cron.

Frank J. Gibson County Recorder
by Wm. E. Johnston Deputy

