

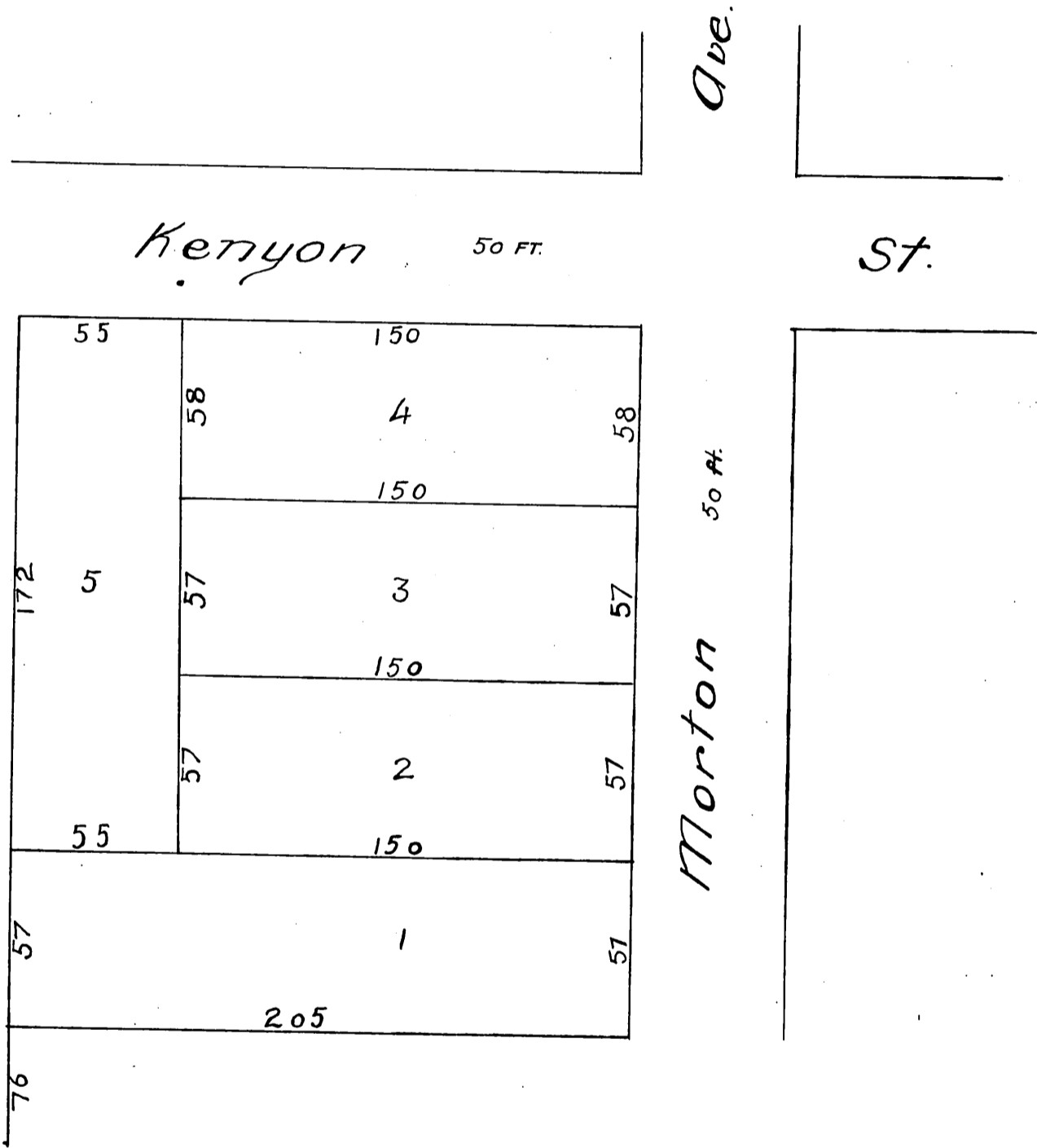
MAP OF
F. M. UNDERWOOD'S SUBDIVISION
of the

John Allin Tract.

Being all of lot No one (1) (Except 76 feet along the south end) of a portion of Block "J." of the subdivision of the lands of J.H. Painter & B.E. Ball in Pasadena Los Angeles Co. Calif.

Surveyed Aug. 17, 1887 by Geo Helen, Sur.

Scale 50 ft. in 1 inch.



*Recorded August 18, 1887
At request of F.M. Underwood.*

Kenyon St. changed to Tremont St. D:38-299-Ord. 2235.