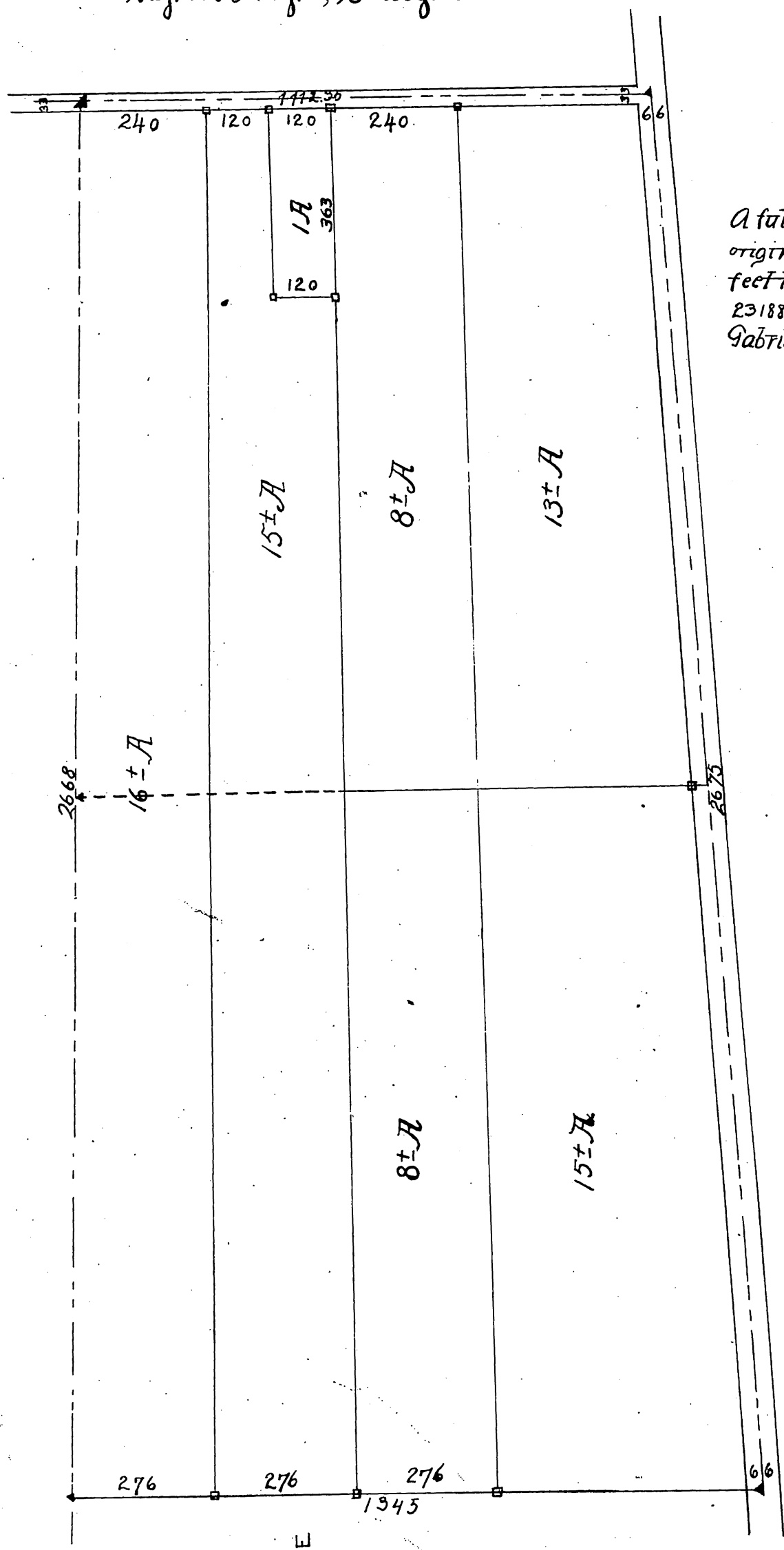
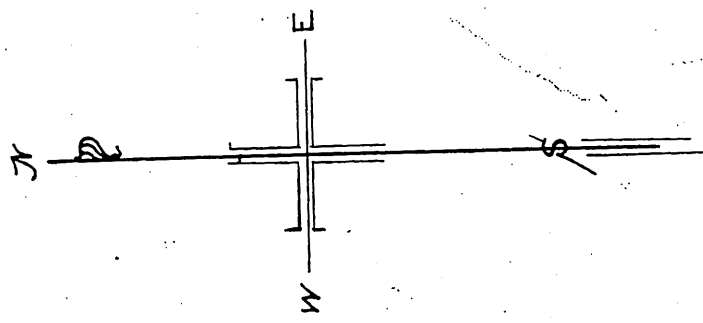




**PLAT**  
 of  
**Subdivision of Land**  
 BELONGING TO  
**GABRIEL AGUAYO.**  
 Being Lots 1 & 2, of Sec. 15, T. 1 S. R. 10 W,  
**SBM**  
 Wagner & Laughlin, Surveyors



A full true and correct copy of the original reduced to a scale of 250 feet to the inch, recorded Aug. 23 1887, at 10:55 A.M. at request of Gabriel Aguayo.



Azusa Ave D: 10-273 D: 4054-244  
 Azusa Ave. Por of. D: 6367-125 D: 19-263

*Copy  
 done*