

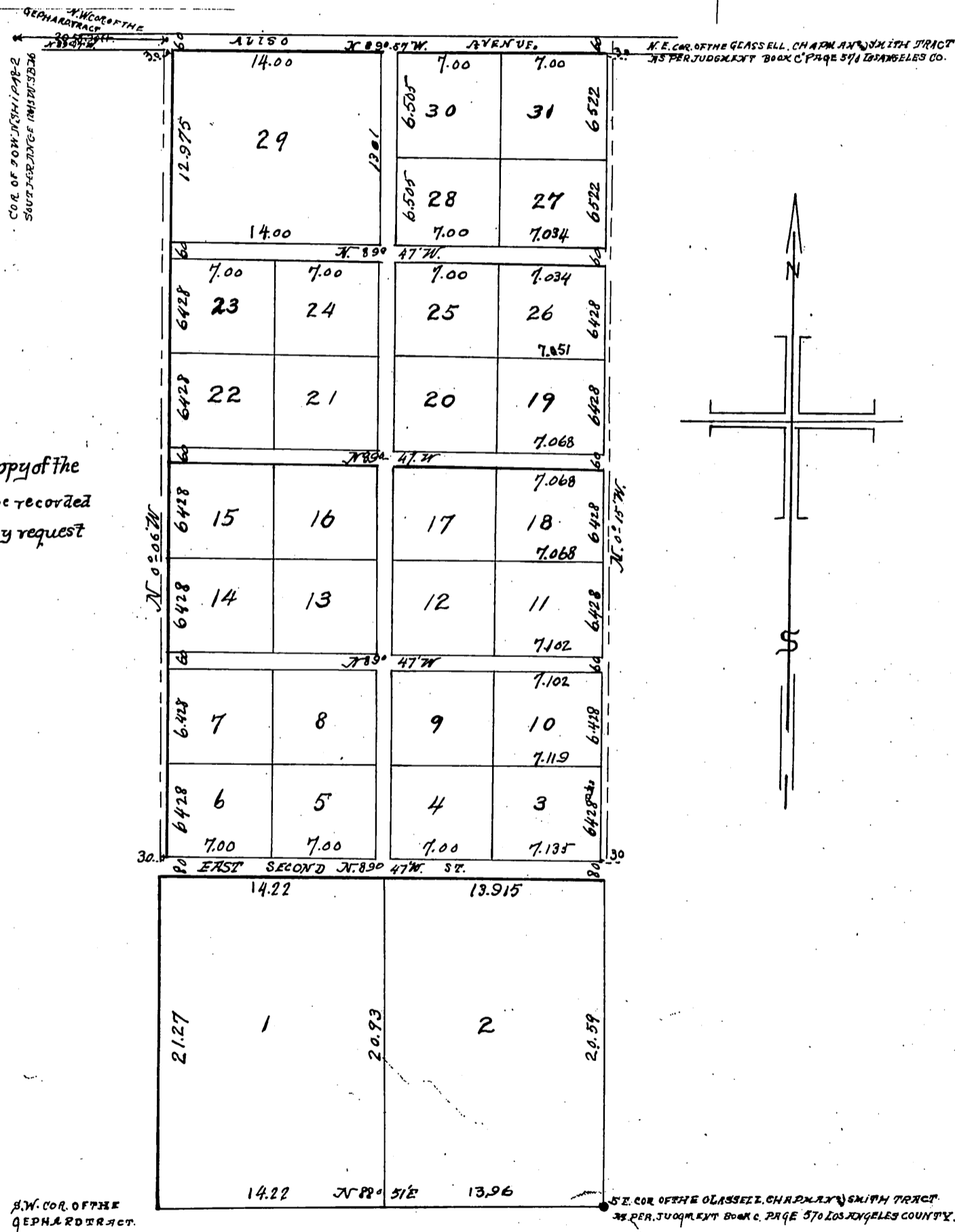
PLAT

H.W. Mills' Subdivision Of that portion of the Rancho San Antonio known as the Gephard Tract.

IN THE THIRD ALLOTMENT TO GLASSELL.
CHAPMAN & SMITH AS PER JUDGMENT BOOK
C PAGE 570 17th DIST. COURT CASE N^o 2055.
SURVEYED JULY 1887 BY L. FRIEL, C.E.
LOS ANGELES, CAL.

SCALE 4 CHS TO 1 INCH

DISTANCE TO CENTRE OF STREETS



A full, true and correct copy of the original, reduced to 1/2 size recorded August 24, 1887 at 11:52 A.M. by request of H.W. Mills.

E. 2nd St changed to Whittier Blvd D:13-146 R.B. 23-16

For vacation of Streets see 84 - 41-42

*Copy
1887*