

Map

Showing portion of the property of

Elpidio T. Higuera

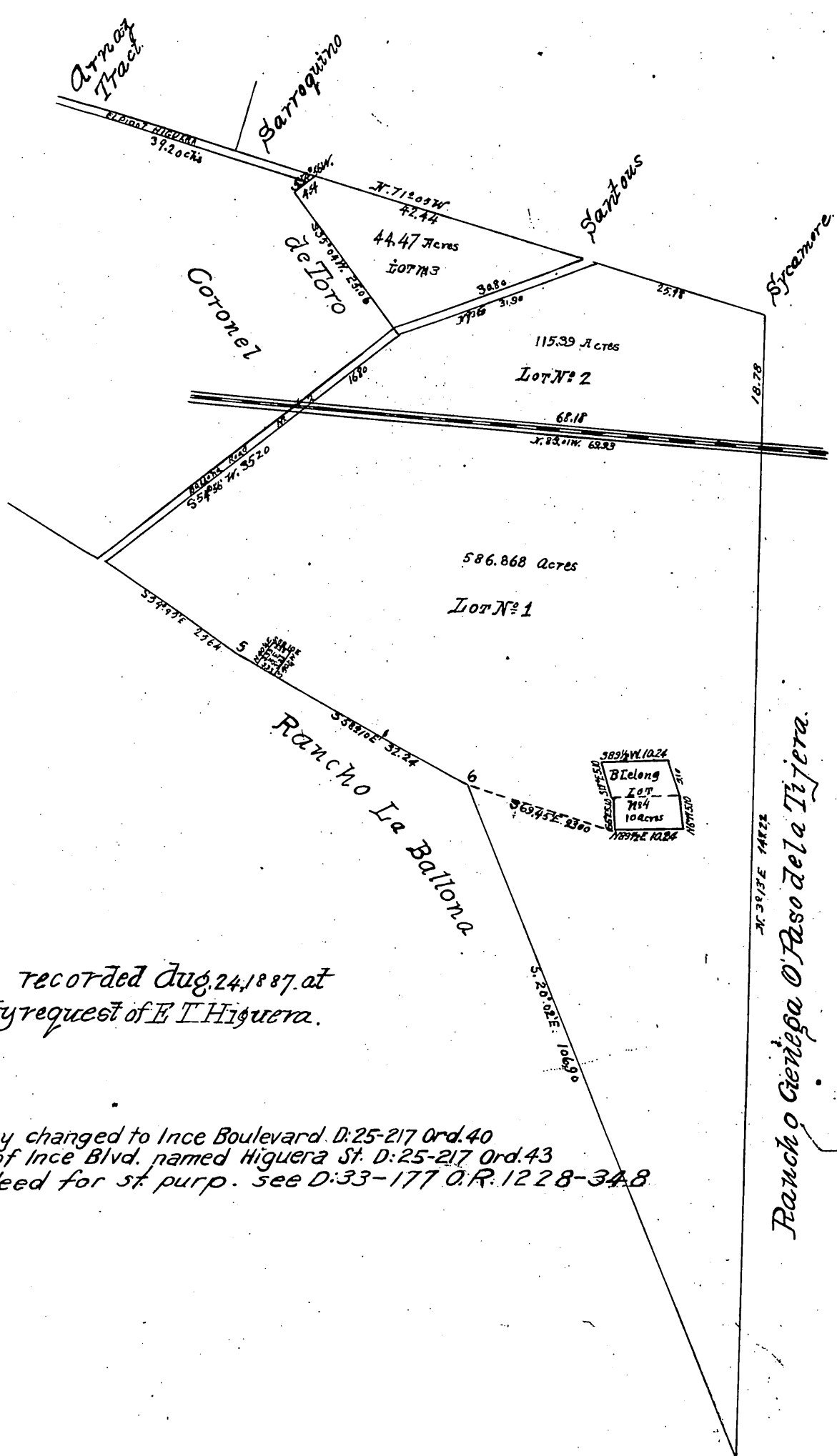
PART OF THE

RANCHO RINCON de los BUEYES

IN THE

County of Los Angeles California

SCALE 200 FT TO 1 INCH



recorded Aug. 24, 1887 at 250 PM by request of E. T. Higuera.

Sherman Way changed to Ince Boulevard. D: 25-217 Ord. 40
1st Str. Ely. of Ince Blvd. named Higuera St. D: 25-217 Ord. 43
For par deed for st. purp. see D: 33-177 O.R. 1228-348

Rancho Genega O'Paso de la Tijera.

Handwritten signature or initials in the bottom left corner.