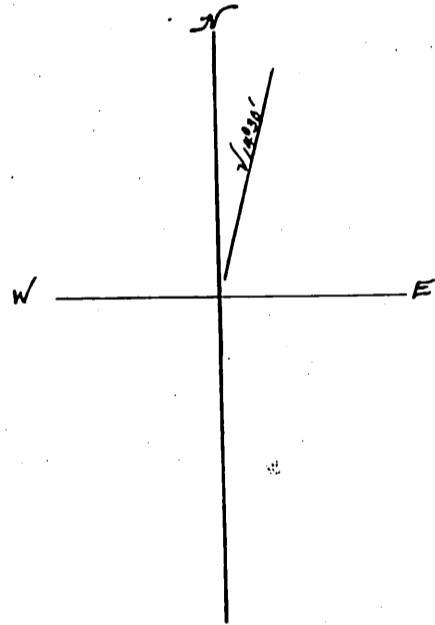
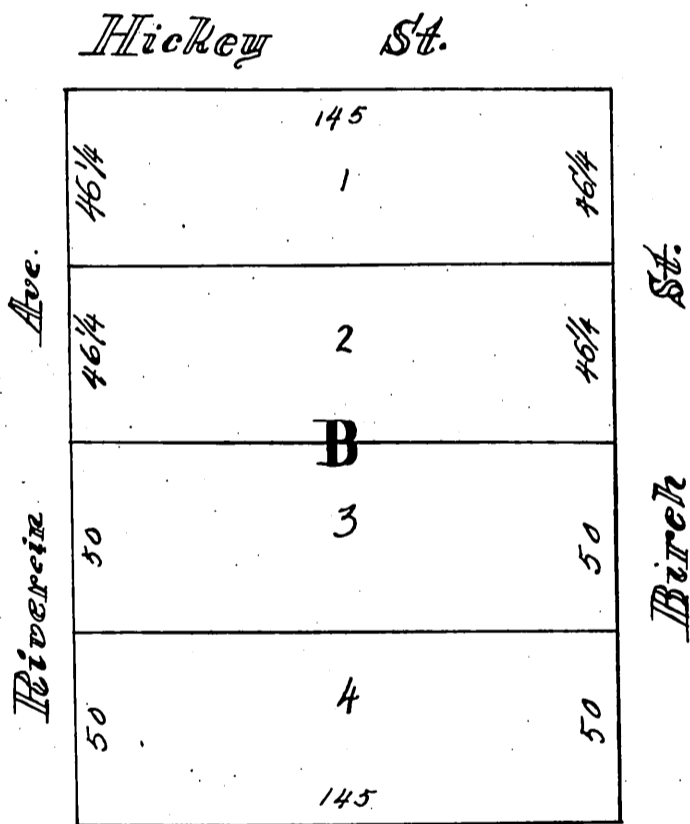


J. W. GARDNER'S  
**SUBDIVISION**

WFLMT / BLOCK 13

*Hickey, Andrews & Crane's*  
ADDITION TO THE TOWN OF  
**SANTA ANA.**

*Note: - This plat is made to correct an error in the original plots recorded on page 65 book 12 also page 25 book 13 records of the county of Los Angeles, Cal.*



*enlarged to the scale of 50ft. to the inch re-  
corded Aug. 24, 1887. at 4 PM. at request of W.S.  
Taylor*

*copy  
over*