

MAP

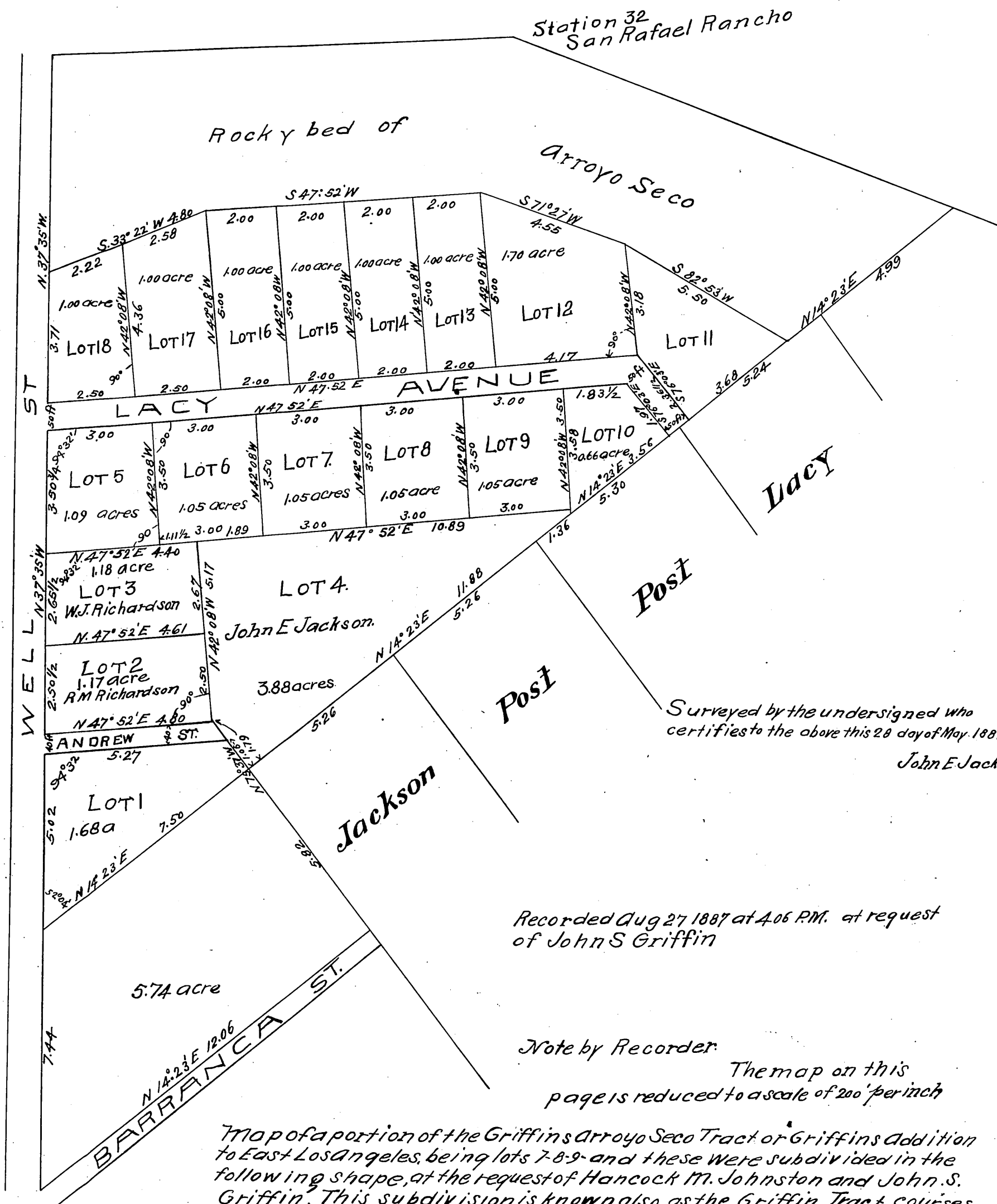
of a portion of the

Griffins Arroyo Seco Tract

Griffins Addition to East Los Angeles

Being Lots 7, 8, 9 and these were subdivided in the following shape at the request of Hancock M Johnston and John S Griffin. This subdivision is known also as the Griffin Tract. Courses are true distances are in chains and decimals. Survey made in March 1884

Scale is 2 chains to one inch



Surveyed by the undersigned who certifies to the above this 28 day of May 1887
John E Jackson.

Recorded Aug 27 1887 at 4.06 P.M. at request of John S Griffin

Note by Recorder:
The map on this page is reduced to a scale of 200 feet per inch

Map of a portion of the Griffins Arroyo Seco Tract or Griffins Addition to East Los Angeles, being lots 7-8-9- and these were subdivided in the following shape, at the request of Hancock M. Johnston and John S. Griffin. This subdivision is known also as the Griffin Tract courses are true. scale is 2 chains to one inch, distances are in chains and decimals, Survey made in March 1884, surveyed by the undersigned who certifies to the above this 28 day of May 1887

John E Jackson.