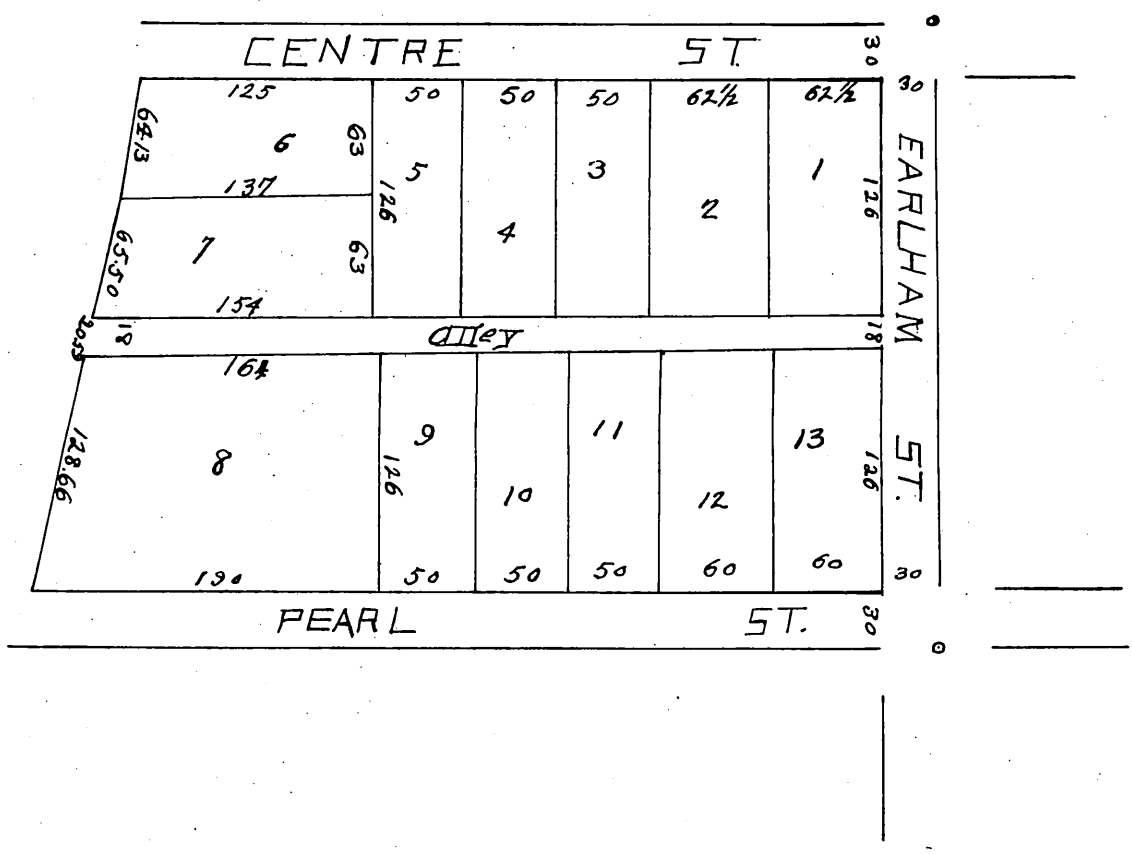


2055

PLAT
 of
Harper's Addition
 TO
MODENA

Being the subdivision of the N.W. 1/4 of Lot 5 Block B
 of Oge & Bond's Land as recorded in Book 5 p. 130 & 131
 Miscellaneous Records of Los Angeles County, Cal.
 SURVEYED & PLATTED BY JOHN T. HALSTED JAN. 21st 1887.
 Scale. 1 inch = 100 ft.



recorded Aug. 29 1887 at 11:33 A.M.
 at request of P. Q. Wickham.

Copy 02/27/02