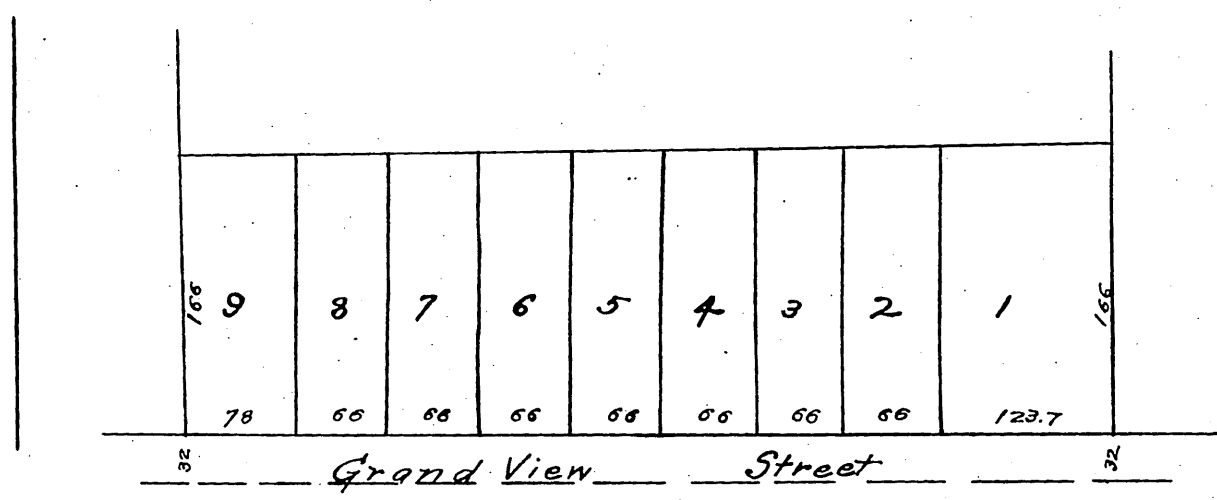


### Sunny Side Tract

Subdivision of the south half  
of lots 22 and 36 and Lots 23  
and 35 in Block N, Painter  
and Ball's Addition to  
Pasadena.  
Scale 2 chs to one inch.



Lot 5 to Pasadena City Sch. Dist. D:32-570R 675-338  
Por. lots 1 to 9 incl. for Grand View St. D:38-102-O.R. 2951-187

Recorded Aug 30, 1887,  
Request S. J. White.

*Copy  
8/11/87*