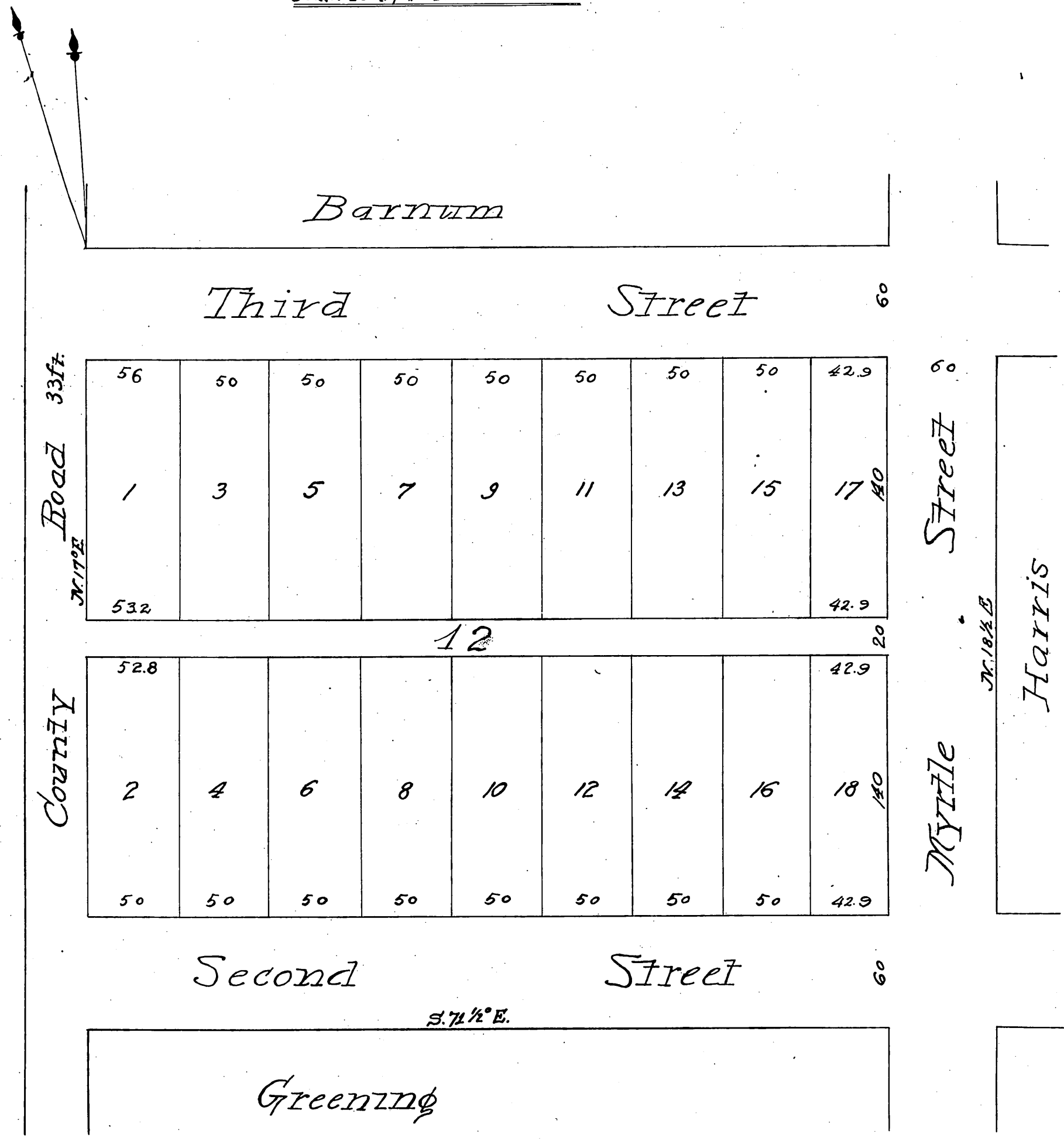


WOOLEY'S Addition Downey City

LOS ANGELES COUNTY CALIFORNIA

Surveyed Aug. 19th 1887. W.B. French Surveyor
Scale: 40ft. prin. Var. 14° 55' E.



(reduced to a scale of 60ft. to
The inch) recorded Aug 30, 1887 at 12:48
M. at request of James Woolley.

County Road changed to College Ave. D:13-79
All Streets shown decl. publ. highway D:27-300 R.B. 20-183 - C.S. 8193

*confd
A. J. Harris*