



# PLAT

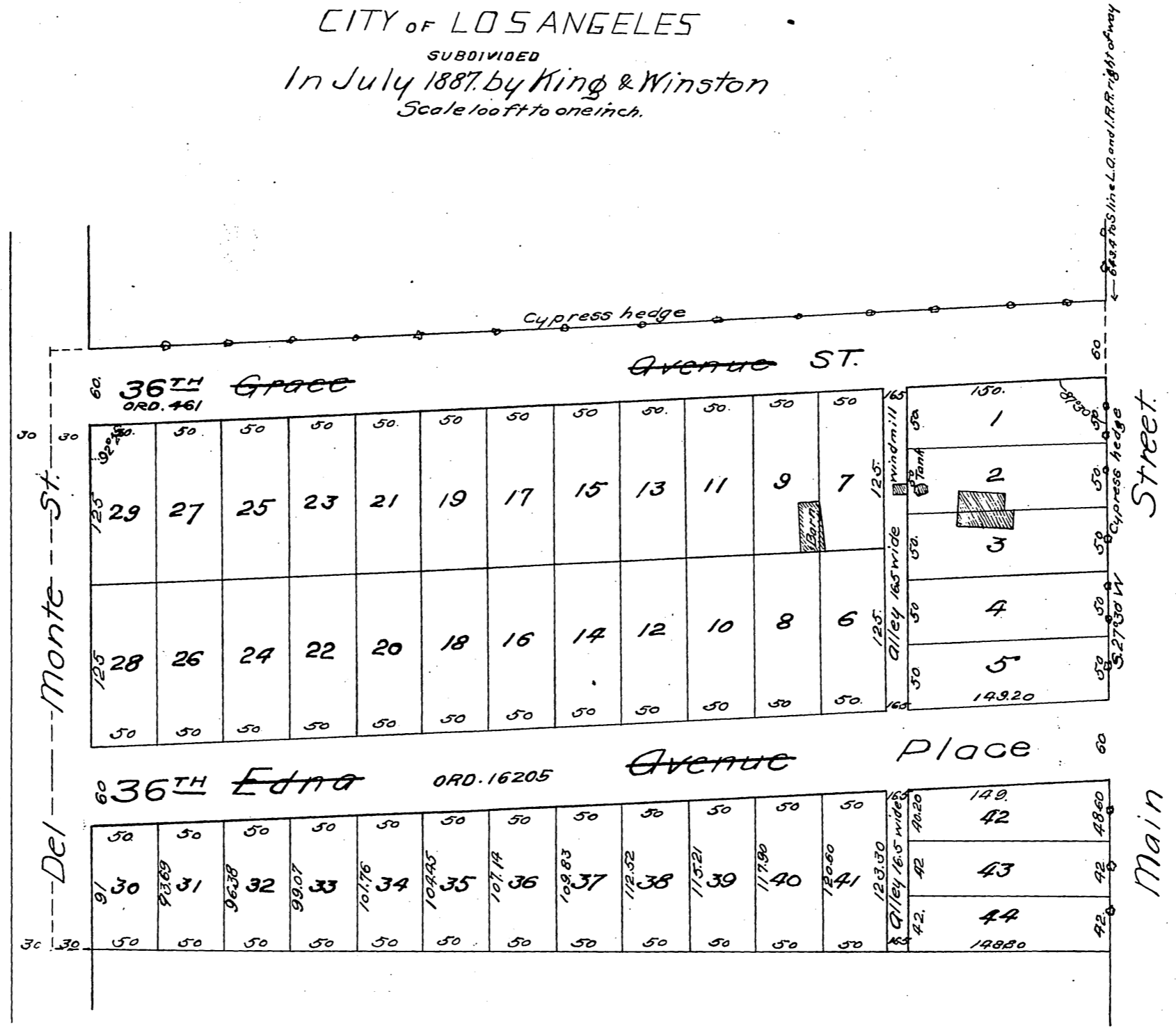
OF THE

## Minnehaha Grove Tract

CITY OF LOS ANGELES

SUBDIVIDED

In July 1887, by King & Winston  
Scale 100ft to one inch.



Widening of Main St. D: 2955-37 -D: 6-283  
 " " Moneta Ave D: 4302 -58 D: 16-25  
 " " " " D: 5051-203 D: 16-181  
 FOR MONETA AVE. SEE ORD. 25696.  
 Main St widening See C.F. 521.  
 Del Monte Ave. changed to Hill St. Ord. 37913

Recorded Aug. 30, 1887 at  
 request of C.C. Lamb

For Lots 26-31 incl. for Hill St. D: 35-108 Dock. Bk. 599-952  
 Hill St. name estab. Ord. 45376

King & Winston